



TEA BROKERS EAST AFRICA LIMITED

Telephone: +254 41 2221953 / 4
 Fax: +254 41 231 4480
 Mobile: +254 735 221953 / 729 403507
 E-mail: mail@tbeal.co.ke
 www.tbeal.net

Tea Trade Centre
 Nyerere Avenue
 PO Box 87296 - 80100



Tea Market Report: Sale 49 of 5th - 7th December, 2022

There was improved demand for the 222,656 packages (15,013,077.50 kilos) in the market with 26.77% remaining unsold.

Leaf Grades

Offerings: 126,439 packages (8,35m/kgs) – 27.67% unsold.

BP1:

Best – Were mostly steady to USC18 above previous levels and a few invoices advanced by up to USC38 but some teas saw a downward price adjustment by USC17 to USC78.

Brighter – Firm to USC23 dearer but select lines shed USC28.

Mediums – KTDA mediums were irregular varying between steady to USC23 dearer to easier by up to USC16 while plantation Mediums met improved competition and gained up to USC29 with only a few teas easing by up to USC17.

Lower Mediums – Were firm to irregularly easier by up to USC48.

Plainer – Varied between steady to USC10 dearer to easier by up to USC9 with select invoices discounted by up to USC29.

PF1:

Best – Ranged between firm to USC14 dearer for most lines to easier by up to USC26.

Current and Future Fresh Auction Offerings

Country	Sale 49 5 - 7 Dec'22		Sale 49 6 - 8 Dec' 21		Sale 50 13 - 14 Dec'22		Sale 51 03 - 04 Jan'23	
	MG	SG	MG	SG	MG	SG	MG	SG
Kenya	113,400	9,800	109,580	12,674	115,440	12,560	121,440	14,640
Uganda	16,500	9,280	17,920	9,856	17,760	9,921	18,040	11,680
Tanzania	920	80	820	360	400	20	1,080	600
Rwanda	8,680	1,820	5,680	820	8,000	1,900	7,920	1,700
Burundi	1,320	480	1,560	500	1,400	260	1,080	300
Zambia	0	0	0	0	0	0	0	0
Malawi	0	0	0	0	0	0	0	0
Madagascar	0	0	0	0	0	0	0	0
Zimbabwe	0	0	0	0	0	0	0	0
D R Congo	0	0	0	0	0	0	0	0
Mozambique	0	0	0	0	0	0	0	0
Ethiopia	0	0	0	0	0	0	0	0
Reprints	59,119	1,257	10,720	7,020	55,600	1,000	53,360	740
Total	140,820	21,460	135,560	24,210	143,000	24,661	149,560	28,920
	162,280		159,770		167,661		178,480	

Brighter – Steady to USC9 above last prices.

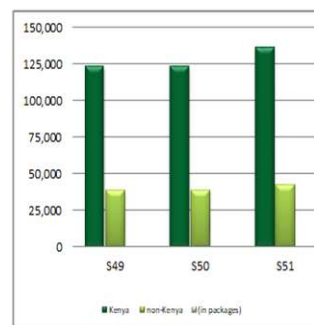
Mediums – KTDA mediums ranged between firm to USC8 dearer to easier by up to USC10 while plantation mediums varied between steady to USC9 dearer to USC12 below previous rates.

Lower Mediums – Were irregular at mostly firm to USC28 dearer to easier by USC10.

Plainer – Irregular varying between steady to USC18 dearer to easier by a similar margin.

DUST GRADES (M1)

Offerings: 73,500 packages (5.49m/kgs) unsold.



PDUST:

Best – Ranged between firm to USC6 dearer to USC20 below last prices.

Cont/Page 2

continued

Brighter – Steady to USC5 above previous levels.

Mediums – KTDA mediums were firm at last rates with plantation mediums irregular varying between dearer by USC11 to easier by USC25.

Lower Medium – Were irregular ranging between steady to USC25 dearer with selected invoices advancing by up to USC40 to easier by up to USC18.

Plainer – Varied between firm to USC8 dearer for some lines while most shed by up to USC12.

USC10.

Brighter – Most teas lost up to USC8 but a few lines advanced by up to USC11.

Mediums – KTDA mediums ranged between steady to USC4 dearer to USC5 below last levels while plantation mediums were firm to USC29 easier.

Lower Medium – Steady to USC15 below previous prices.

Plainer – Varied between firm to USC6 dearer to easier by up to USC8

ier while others held value. Clean well sorted coloury **Fannings** held value while **similar DUSTs** gained. **Other Fannings** were about firm with DUSTs steady. BMFs were well absorbed.

MARKETS

Pakistan Packers, Bazaar, and Afghanistan showed more and useful activity with **Iran** lending strong and improved support. **Egyptian Packers, Kazakhstan, other CIS states, Yemen and other Middle Eastern countries** were active but selective while **Sudan** maintained interest. **UK and Russia** were more active while **Local Packers** maintained activity. **Somalia** were active at the lower end of the market.

DUST1:

Best – Were steady to easier by

SECONDARY GRADES (S1)

In the Secondary Catalogues, **BPs** were discounted with best **PFs** eas-

Mombasa Auction Hammer Market Analysis—Sale No 49/2022

	Category (Band)	Percentage volume sold	Average Price ranges (for the marks within		Min-Max Prices per grade							
					BP1		PF1		PD		DUST1	
			Min	Max	Min	Max	Min	Max	Min	Max	Min	Max
1	Best	92%	2.83	3.52	2.72	4.96	2.73	3.16	2.72	2.98	2.73	3.25
2	Below Best	93%	2.68	2.87	2.5	3.76	2.64	2.96	2.62	2.82	2.59	2.84
3	Good	35%	2.21	2.68	2	2.99	2.1	2.82	2.2	2.68	2.12	2.61
4	Best Medium	83%	1.93	2.33	2	2.45	1.8	2.42	1.96	2.34	1.8	2.12
5	Medium	67%	1.43	2.13	1.35	2.08	1.42	2.2	1.45	2.24	1.5	2
6	Lower Medium	92%	1.32	1.7	1.16	1.49	1.18	1.78	1.35	1.75	1.32	1.72
7	Plain	95%	1.18	1.55	1.03	1.4	1.2	1.5	1.22	1.43	1.25	1.56
	Totals	62%	1.18	3.52	1.03	4.96	1.18	3.16	1.22	2.98	1.25	3.25
	Category (Band)	Percentage of Total Sold	Average Prices per grade								Totals	
			BP1		PF1		PD		DUST1			
			Kgs	Avg	Kgs	Avg	Kgs	Avg	Kgs	Avg	Kgs	Avg
1	Best	13%	122900	3.21	632684	2.95	224692	2.8	101141	2.79	1081417	2.93
2	Below Best	28%	266397	2.86	1298719	2.84	525856	2.72	251967	2.7	2342939	2.8
3	Good	25%	347561	2.57	1060415	2.47	525115	2.46	202244	2.4	2135335	2.48
4	Best Medium	10%	39840	2.16	376384	2.14	377436	2.2	38520	2.01	832180	2.16
5	Medium	14%	59721	1.77	615231.4	1.85	396385	1.87	77480	1.79	1148817	1.85
6	Lower Medium	7%	55399	1.28	232469	1.53	213299	1.52	126130	1.49	627297	1.5
7	Plain	3%	31792	1.19	78152	1.35	95716	1.33	80428	1.42	286088	1.34
	Totals	100%	923610	2.54	4294054	2.46	2358499	2.28	877910	2.24	8454073	2.4

Average Auction Hammer Quantities and Prices by Country

Country of Origin	Main			Secondary			Total			Total for Corresponding Sale for Last Year		
	Pkgs	Kgs	USC	Pkgs	Kgs	USC	Pkgs	Kgs	USC	Pkgs	Kgs	USC
Kenya	100,320	7,017,484	248	9,160	466,303	138	109,480	7,483,787	241	109,320	7,405,771	267
Uganda	15,420	984,397	150	9,280	455,124	117	24,700	1,439,521	139	25,376	1,478,304	112
Tanzania	800	48,619	147	-	-	-	800	48,619	147	1,090	56,636	97
Rwanda	8,080	560,672	289	1,740	113,268	239	9,820	673,940	280	5,680	397,476	317
Burundi	1,120	72,173	239	420	20,636	145	1,540	92,809	218	1,920	116,464	242
Zambia	-	-	-	-	-	-	-	-	-	-	-	-
Malawi	-	-	-	-	-	-	-	-	-	-	-	-
Mozambique	-	-	-	-	-	-	-	-	-	-	-	-
Madagascar	-	-	-	-	-	-	-	-	-	-	-	-
Zimbabwe	-	-	-	-	-	-	-	-	-	-	-	-
D R Congo	-	-	-	-	-	-	-	-	-	-	-	-
Ethiopia	-	-	-	-	-	-	-	-	-	-	-	-
Total	125,740	8,683,345	239	20,600	1,055,331	140	146,340	9,738,676	228	143,386	9,454,651	244

Sale Number	Previous Sale's Quantities and Prices									Total for Corresponding Sale for Last Year		
	Main			Secondary			Total			Pkg	Kgs	USC
Sale 48/22	124,740	8,613,503	238	20,500	1,032,997	138	145,240	9,646,501	228			
Sale 47/22	126,060	8,719,647	242	18,818	960,674	142	144,878	9,680,322	232	153,255	10,192,804	245
Sale 46/22	114,239	7,901,518	244	17,080	870,668	144	131,319	8,772,186	234	152,160	10,101,019	229
Sale 45/22	120,660	8,339,127	254	17,900	898,139	145	138,560	9,237,266	243	148,233	9,785,907	222
Sale 44/22	122,760	8,490,714	256	16,980	850,125	143	139,740	9,340,838	246	116,600	7,755,459	224
Sale 43/22	116,960	8,077,622	253	16,420	815,579	139	133,380	8,893,200	242	112,659	7,427,140	226

Average Auction Hammer Prices by Grade and Country

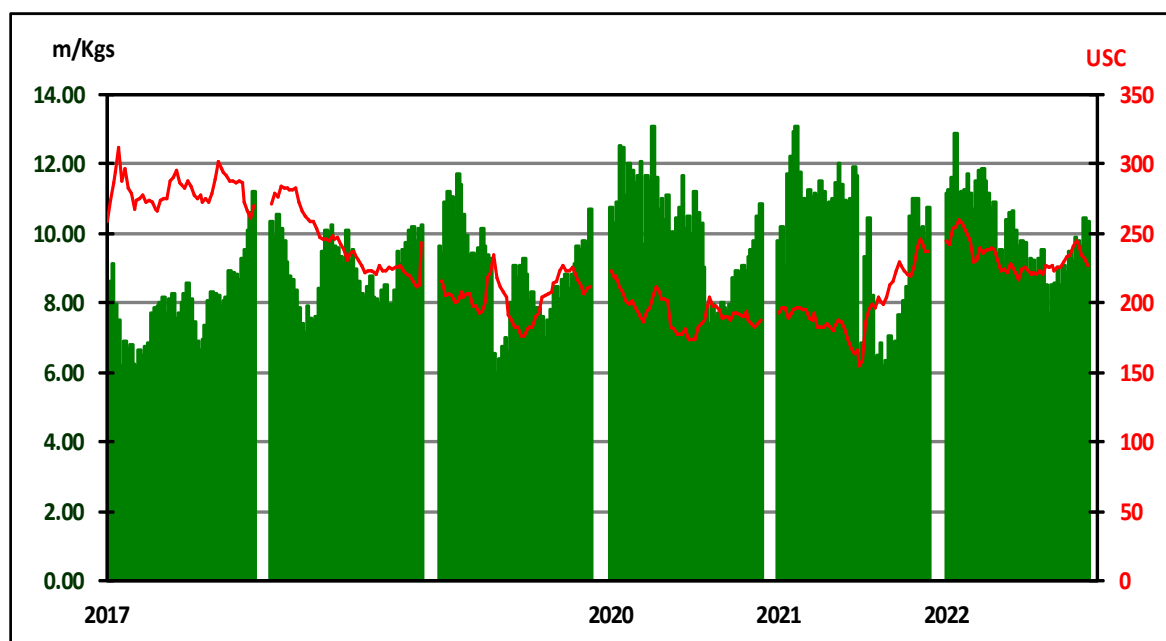
Country of Origin	Current Sale's Prices per Grade										Corresponding Prices per Grade for Last Year									
	BP1	PF1	PD	D1	BP/2	PF/2	D/2	F/1	BMF	Av	BP1	PF1	PD	D1	BP/2	PF/2	D/2	F/1	BMF	Av
Kenya	261	252	239	241	144	159	145	135	101	241	239	286	284	279	112	155	110	129	71	267
Uganda	128	155	152	146	113	137	132	113	95	139	103	127	128	122	91	105	98	93	69	112
Tanzania	-	140	153	150	-	-	-	-	-	147	88	100	126	99	84	82	68	-	72	97
Rwanda	317	282	282	268	273	224	230	190	114	280	366	335	330	313	246	-	205	167	-	317
Burundi	241	249	225	228	-	-	146	145	-	218	222	295	268	254	-	-	150	148	-	242
Zambia	-	-	-	-	-	-	-	-	-	-	-	-	-	-	-	-	-	-	-	-
Malawi	-	-	-	-	-	-	-	-	-	-	-	-	-	-	-	-	-	-	-	-
Mozambique	-	-	-	-	-	-	-	-	-	-	-	-	-	-	-	-	-	-	-	-
Madagascar	-	-	-	-	-	-	-	-	-	-	-	-	-	-	-	-	-	-	-	-
Zimbabwe	-	-	-	-	-	-	-	-	-	-	-	-	-	-	-	-	-	-	-	-
D R Congo	-	-	-	-	-	-	-	-	-	-	-	-	-	-	-	-	-	-	-	-
Ethiopia	-	-	-	-	-	-	-	-	-	-	-	-	-	-	-	-	-	-	-	-
Total	255	245	227	224	200	153	155	126	98	228	216	273	262	258	130	137	119	117	70	244

Sale Number	Previous Sale's Prices per Grade										Corresponding Prices per Grade for Previous Year									
	BP1	PF1	PD	D1	BP/2	PF/2	D/2	F/1	BMF	Av	BP1	PF1	PD	D1	BP/2	PF/2	D/2	F/1	BMF	Av
Sale 48/22	246	245	228	226	203	148	153	128	97	228	240	282	257	250	122	131	113	109	71	249
Sale 47/22	255	245	232	238	212	154	153	135	98	232	245	278	248	252	114	122	122	109	70	245
Sale 46/22	247	253	231	236	209	152	156	137	100	234	210	263	230	215	112	128	112	107	73	229
Sale 45/22	257	259	244	259	204	158	164	142	100	243	206	248	229	227	135	134	107	113	71	222
Sale 44/22	257	261	241	278	185	163	156	144	99	246	212	248	234	234	121	122	100	110	70	224
Sale 43/22	251	258	240	273	166	156	157	139	101	242	194	259	235	237	120	134	112	120	70	226

Average Auction Prices and Quantities by Country

Country	Previous Sale Sale 48/22		Year To Date 2022		Last Year Sale 48/21		Year To Date 2021		Variance Year To Date	
	Kgs	USC	Kgs	USC	Kgs	USC	Kgs	USC	Kgs	USC
Kenya	8,290,213	239	384,958,852	249	7,890,395	270	373,751,567	205	11,207,285	44
Uganda	1,414,128	138	65,330,301	135	1,556,024	112	65,990,966	114	-660,665	21
Tanzania	35,472	153	5,160,050	126	156,656	132	4,542,964	102	617,086	24
Rwanda	505,416	289	22,842,898	282	441,820	326	22,572,040	271	270,858	11
Burundi	81,229	216	5,727,304	229	108,838	238	6,014,095	202	-286,791	27
Zambia	-	-	-	-	-	-	-	-	0	0
Malawi	-	-	-	-	-	-	-	-	0	0
Mozambique	-	-	-	-	-	-	-	-	0	0
Madagascar	-	-	-	-	-	-	98,943	101	-98,943	-101
Zimbabwe	-	-	-	-	-	-	-	-	0	0
D R Congo	-	-	-	-	-	-	-	-	0	0
Ethiopia	-	-	23,839	148	-	-	155,720	135	-131,881	13
Total	10,326,458	227	484,043,244	234	10,153,733	246	473,126,295	195	10,916,949	39

Mombasa Weekly Average Auction Quantities and Prices 2017—2022



	Jan		Feb		Mar		Apr		May		Jun		Jul		Aug		Sep		Oct		Nov		Dec		Total	
	Kgs	USC	Kgs	USC	Kgs	USC	Kgs	USC	Kgs	USC	Kgs	USC	Kgs	USC	Kgs	USC	Kgs	USC	Kgs	USC	Kgs	USC	Kgs	USC	Kgs	USC
2022	46.8	249	45.2	255	57.0	236	44.3	238	49.0	220	40.1	223	37.1	222	44.1	226	34.6	226	35.6	235	50.1	236			473.7	239
2021	40.8	194	49.9	195	55.7	192	44.7	183	45.4	184	56.2	174	34.4	168	38.4	201	26.2	208	30.3	226	51.1	231	30.8	238	503.8	197
2020	44.4	217	47.4	203	56.5	192	46.9	205	42.5	189	53.0	181	42.3	176	34.6	192	39.1	194	33.3	192	36.1	190	40.6	187	516.8	193
2019	52.2	209	44.1	203	37.8	202	47.9	206	25.6	218	30.7	190	44.0	179	31.3	192	30.6	208	42.5	222	37.0	219	30.2	210	454.0	204
2018	50.7	278	35.0	282	30.3	265	40.6	252	39.9	246	38.0	239	44.9	233	33.6	223	32.9	223	42.9	225	39.5	219	30.1	213	458.4	243
2017	41.7	284	26.5	286	25.6	273	29.2	272	39.9	275	31.5	289	32.4	283	27.8	275	32.9	286	41.9	291	36.3	283	31.9	266	397.6	281

Exchange Rates (2020-2022)



During the week the Kenya Shilling traded between KES 122.50 -122.90 and reached 122.55 at its lowest end week. Expectations are that the Kenya Shilling against US Dollar will trade at the level of 122.50 - 123.00 in the coming week.

(These figures are given as a guide and readers are advised not to use them as a basis for business transactions)

Auction Quantities

Country Offerings	This Week Sale 49/22		Year To Date 2022		Year To Date 2021		Variance Year To Date	
	Packages	Kgs	Packages	Kgs	Packages	Kgs	Packages	Kgs
Kenya	123,200	8,466,525	6,027,087	411,051,831	5,736,580	387,059,146	290,507	23,992,685
Uganda	25,780	1,503,372	1,169,297	67,475,123	1,171,600	67,833,210	-2,303	-358,087
Tanzania	1,000	61,880	102,120	5,526,506	94,419	5,129,392	7,701	397,114
Rwanda	10,500	721,934	341,240	23,525,183	332,759	22,817,780	8,481	707,403
Burundi	1,800	107,446	98,078	5,924,706	94,478	5,843,832	3,600	80,874
Zambia	0	0	0	0	960	56,740	-960	-56,740
Malawi	0	0	1,120	65,848	0	0	1,120	65,848
Mozambique	0	0	0	0	0	0	0	0
Madagascar	0	0	0	0	2,020	99,835	-2,020	-99,835
Zimbabwe	0	0	0	0	0	0	0	0
D R Congo	0	0	0	0	0	0	0	0
Ethiopia	0	0	400	22,879	2,300	130,640	-1,900	-107,761
Total	162,280	10,861,157	7,739,342	513,592,076	7,435,116	488,970,575	304,226	24,621,501

Sellers' Main Grade Quantities (in Packages)

Origin	BP 1			PF 1			PD			D 1			Total		
	S 49	S 50	S 51	S 49	S 50	S 51	S 49	S 50	S 51	S 49	S 50	S 51	S 49	S 50	S 51
KTDA	17837	17320	17600	71060	65520	61600	36040	34640	32480	6600	7000	9280	131537	124480	120960
Unilever Tea	240	160	520	160	260	120	120	180	180	1600	420	380	2120	1020	1200
James Finlay	920	760	840	1320	1280	1320	1120	760	1120	0	0	0	3360	2800	3280
Eastern Produce	840	1040	840	3520	2840	3240	2000	2200	2720	600	680	680	6960	6760	7480
Others (K)	3200	4960	5120	13120	19360	21080	11100	15500	17580	1960	3220	3300	29380	43040	47080
Uganda	2640	3600	2760	6479	6920	7560	6340	6680	6840	2720	2720	2760	18179	19920	19920
Tanzania	590	590	510	820	900	820	560	640	680	440	440	480	2410	2570	2490
Rwanda	3120	3320	3040	3700	3600	3400	2240	1800	2280	840	760	640	9900	9480	9360
Burundi	640	720	600	520	440	400	320	360	240	280	320	240	1760	1840	1480
DR Congo	0	0	0	0	0	0	0	0	0	0	0	0	0	0	0
Malawi	0	0	0	80	80	80	80	80	80	0	0	0	160	160	160
Zimbabwe	0	0	0	0	0	0	0	0	0	0	0	0	0	0	0
Madagascar	0	0	0	0	0	0	0	0	0	0	0	0	0	0	0
Mozambique	0	0	0	0	0	0	0	0	0	0	0	0	0	0	0
Zambia	0	0	0	0	0	0	0	0	0	0	0	0	0	0	0
Ethiopia	0	0	0	0	0	0	160	160	160	0	0	0	160	160	160
Total	30027	32470	31830	100779	101200	99620	60080	63000	64360	15040	15560	17760	205926	212230	213570

Buyer Purchases of Teas Offered by Grade (in Packages)

BUYER	%	Total	BP1	PF1	PD	D1	BP2	PF2	D2	FNGS	BMF
1 GLOBAL TEA & COMMODITIES KENYA LTD.	10.59	23,560	1,920	11,100	2,480	1,900	40	480	1380	1840	2420
2 CUP OF JOE LTD	7.98	17,760	6,080	7,120	4,120		440				
3 CHAI TRADING COMPANY LTD	6.63	14,760	1,400	9,680	2,280	840	120	160	220	60	
4 SSOE (KENYA) LIMITED	5.43	12,080	1,240	4,140	2,740	1,280		1,700	440	540	
5 CARGILL KENYA LTD	4.81	10,700		8,760	1,920			20			
6 MOMBASA COFFEE LTD	3.58	7,960	40	1,240	4,280	2,320	80				
7 JAMES FINLAY MOMBASA LIMITED	3.38	7,520		1,920	5,360	240					
8 VAN REES KENYA LIMITED	3.24	7,200	320	3,680	1,120	400		840	80	760	
9 LAB INTERNATIONAL KENYA LTD	2.89	6,420		2,280	2,360	1,720		60			
10 DEVCHAND KESHAVJI (K) LTD	2.66	5,920	40	5,840		40					
11 COFFTEA AGENCIES LTD	1.98	4,400	2,360	360	160			200		1,320	
12 ABBAS TRADERS LTD	1.47	3,280	160	760	880	640	260	240	180	160	
13 MIZAJ AFRICA LTD	1.10	2,440	160	480	1,680	120					
14 M.J. CLARKE LTD	0.85	1,900			1,720	40				140	
15 SUMMER LINER CO. LTD	0.82	1,820	40	400		160	360	160	60	520	120
16 AFRIBRIDGE TRADE EXPORTERS LTD	0.80	1,780		1,520		200			40	20	
17 IMPERIAL TEAS (EPZ) LTD	0.64	1,420	200	120	360	440		40	160	100	
18 RANFER TEAS KENYA LTD	0.63	1,400		680	520	200					
19 SWAFI FOODS LIMITED	0.61	1,360	160	200	40	280	120	260	160	120	20
20 AL EMIR LIMITED	0.60	1,340		1,100	40	160				40	
21 SHAKAB EXPORT & IMPORT CO. LTD	0.60	1,340		600	280	160	140	20	80	60	
22 INDO-AFRICAN TEA CO. (K) LTD.	0.59	1,320		1280	40						
23 STANSAND (A) LTD	0.57	1,260		880				360		20	
24 SARDIA INTERNATIONAL CO. LTD	0.45	1,000		560	240						200
25 DRINCO INTERNATIONAL LIMITED	0.32	720	80	640							
26 LINDOP & COMPANY (KENYA) LTD	0.29	640		120	520						
27 TUSHA TEA LTD	0.29	640	640								
28 AIMCO ENTERPRISES LTD	0.26	580								140	440
29 MCLEOD RUSSEL AFRICA LIMITED	0.22	480	80		280	80			40		
30 PWANI HAULIERS	0.20	440						40			400
31 MAISHA COMMODITIES	0.19	420	40					60	100	160	60
32 MOMBASA TEA TRADERS LTD	0.16	360			240	120					
33 TROPICAL CROPS & COMMODITIES	0.15	340					160			40	140
34 AXIS TEA & SERVICES LIMITED	0.13	280							60		220
35 LULA TRADING COMPANY	0.12	260	160				40				60
36 AL KHALIFA ENTERPRISES LTD	0.09	200									200
37 TEAVANA TEA STORE LTD	0.09	200									200
38 KIRINDO TRADERS LIMITED	0.08	180					80			40	60
39 AFRO TEAS LTD	0.07	160	40		40			20		60	
40 ALIBHAI RAMJI (MSA) LTD	0.07	160	80					60		20	
41 GREEN LEAF TRADING CO. LTD	0.06	140								140	
42 LUTEX LIMITED	0.03	60						40		20	
43 NALA TEA COMPANY LTD	0.03	60							60		
44 CAPITAL TEA TRADERS	0.02	40								20	20
45 EMPIRE KENYA (EPZ) LTD	0.01	20								20	
Total Sold	65.76	146,320	15,240	65,460	33,700	11,340	1,840	4,760	3,060	6,360	4,560
Withdraw n	0.49	1,080	280	600	200						
Unsold	33.75	75,116	12,957	32,139	25,100	2,940	300	400	120	920	240
% Unsold			45	33	43	21	14	8	4	13	5
Grand Total	100.00	222,516	28,477	98,199	59,000	14,280	2,140	5,160	3,180	7,280	4,800

Sale 48/22	65.56%	145,240	16,860	64,060	32,320	11,500	1,540	3,980	3,060	7,540	4,380
Sale 47/22	65.88%	144,878	20,440	58,500	35,240	11,880	1,440	3,779	2,900	6,499	4,200
Sale 46/22	62.26%	131,319	13,860	56,600	32,799	10,980	1,460	3,140	2,720	6,240	3,520
Sale 45/22	67.37%	138,560	16,680	59,440	34,440	10,100	1,260	3,140	2,620	6,360	4,520
Sale 44/22	70.73%	139,740	15,720	61,960	35,040	10,040	900	3,340	2,480	5,660	4,600
Sale 43/22	68.59%	133,360	17,100	55,620	35,160	9,080	1,140	2,960	2,280	5,520	4,500

Other Tea Auction Centres

Colombo: at Sale 47 held on 29th and 30th November, 2022. The 0.6Mkg of Ex estate teas on offer met with fair demand. Select Best Western High Grown BOPs were firm to a little dearer following quality, the below best and plainer varieties were irregular. Select Best Western High Grown BOPFs were selectively dearer, the below best and plainer varieties were firm to irregular. Nuwara Eliya BOPs were irregular, the BOPFs were firm. Uda Pussellawa BOPs were irregular following quality, the BOPFs were marginally dearer. UVA BOPs were easier, the BOPFs gained following quality. Low grown CTC BP1s were firm, the High and Medium sorts were tending easier. Low Grown CTC PF1s were irregularly dearer, the High and medium sorts were mostly firm. The 1.9Mkg of Low Grown teas which were on offer met with good demand. In the Leafy segment, OPs were firm, OPAs appreciated a few rupees. Select best OP1s were firm, others were dearer. In the Semi Leafy segment, BOP1s were firm, Pekoe varieties followed a similar trend. Pekoe1s met with irregular demand. In the Small Leaf segment, FBOPs were firm. FBOPF varieties continued to attract good demand. FBOPF1s were firm. BOPF.SP, BOPF, BOP.SP and BOPs too met with fair demand. Best Premium Flowery teas were firm, others met with irregular demand. Turkey, Russia, Iran and the C.I.S countries lent fair support. Libya and Iraq were active.

Chittagong: at Sale 30 held on the 28th November, 2022. **CTC LEAF:** 58,775 packages of Current Season teas on offer met with a stronger demand. **BROKENs:** The best varieties were well supported and were fully firm whilst good types met with a stronger demand and advanced in price following competition. There was also quite a fair demand for the Medium varieties which were generally steady. Plain teas saw a little more demand at around last levels. There was better disposal of BLF varieties at last levels with less withdrawals. **FANNINGS:** Best Fannings continued to attract strong demand at around firm rates. Good varieties saw stronger demand with prices appreciating further. Medium types were well absorbed at steady levels. Plain varieties saw a little more demand and were about steady with fewer withdrawals. BLF teas had a better sale at steady rates. **CTC DUST:** 12,824 packages of Current Season teas on offer met with good demand. Good liquoring Dusts fetched firm to occasionally dearer prices. Mediums sold well at around last levels.

Plain and BLF Dusts were once again an easier market and saw fair withdrawals. Blenders lent strong support with fair interest from the Loose tea buyers.

COMMENTS: Blenders operated very strongly across the board especially on bright liquoring varieties. Loose tea buyers were not as active as in the last week. Dusts sold well.

Cochin: at Sale 46 held on the 16th November, 2022. **CTC Leaf:** Good demand. All grades sold irregularly around last levels. **Buying pattern:** Up country buyers operated. **ORTHODOX Leaf:** Good demand. High grown, medium whole leaf and broken grades sold at irregular levels to occasionally dearer levels. Fannings showed subdued demand and was easier. **Buying pattern:** CIS operating with support from ME. **Dust:** Good Demand. Good marks and better mediums sold irregular and lower by 1-2c. Plainer sorts fully firm to occasionally dearer by 1-2c. **Buying pattern:** Major blenders and internal buyers active.

Calcutta: at Sale 48 held on the 29th November to 1st December, 2022, **CTC:** Better and good Assam categories met with lower demand and lost ground, selling at easier levels. Medium and plainer Assams met with good demand and sold at barely steady levels. Better Dooars were irregular and easier closely following quality. Plainer Dooars sold irregularly around last levels. **Dust:** There was good demand. Good liquoring Assams were barely steady to easier. Medium sorts were around last levels. M/s Hindustan Unilever did not operate on leaf market. They showed interest on brighter liquoring Assams in the dust market. M/s Tata Consumer Products operated on medium Assams with some inquiry on plainer Dooars in the leaf market. They were selective in the dust mar-

ket. Western India buyers were active on better Assams. Limited interest was seen from export accounts on bolder broken. Local buyers were active on the Dooars.

Guwahati: at Sale 48 held on the 30th November, 2022, there were 199,224 packages on offer.

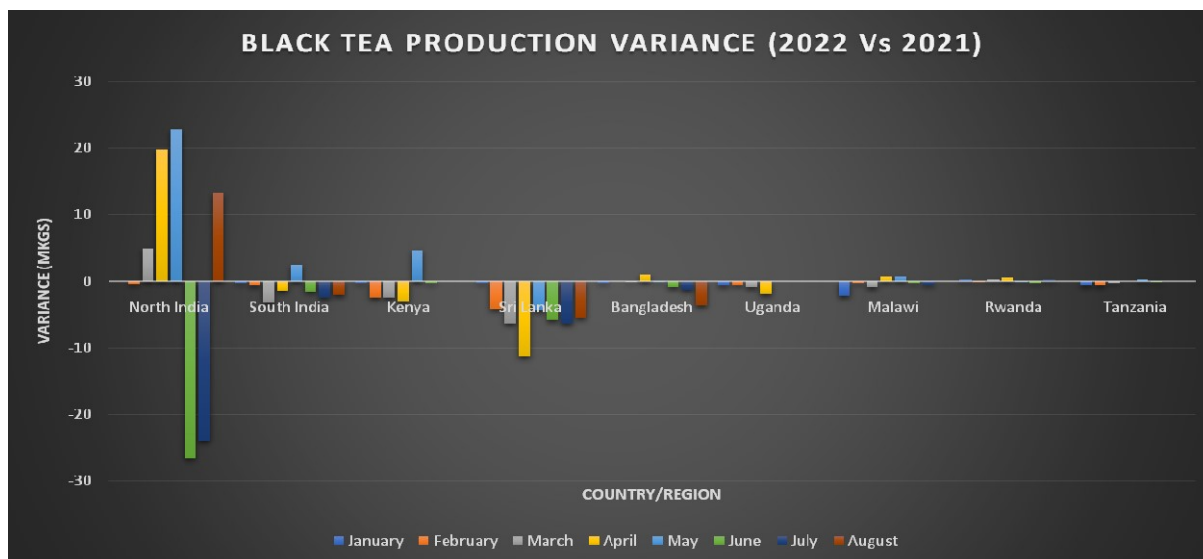
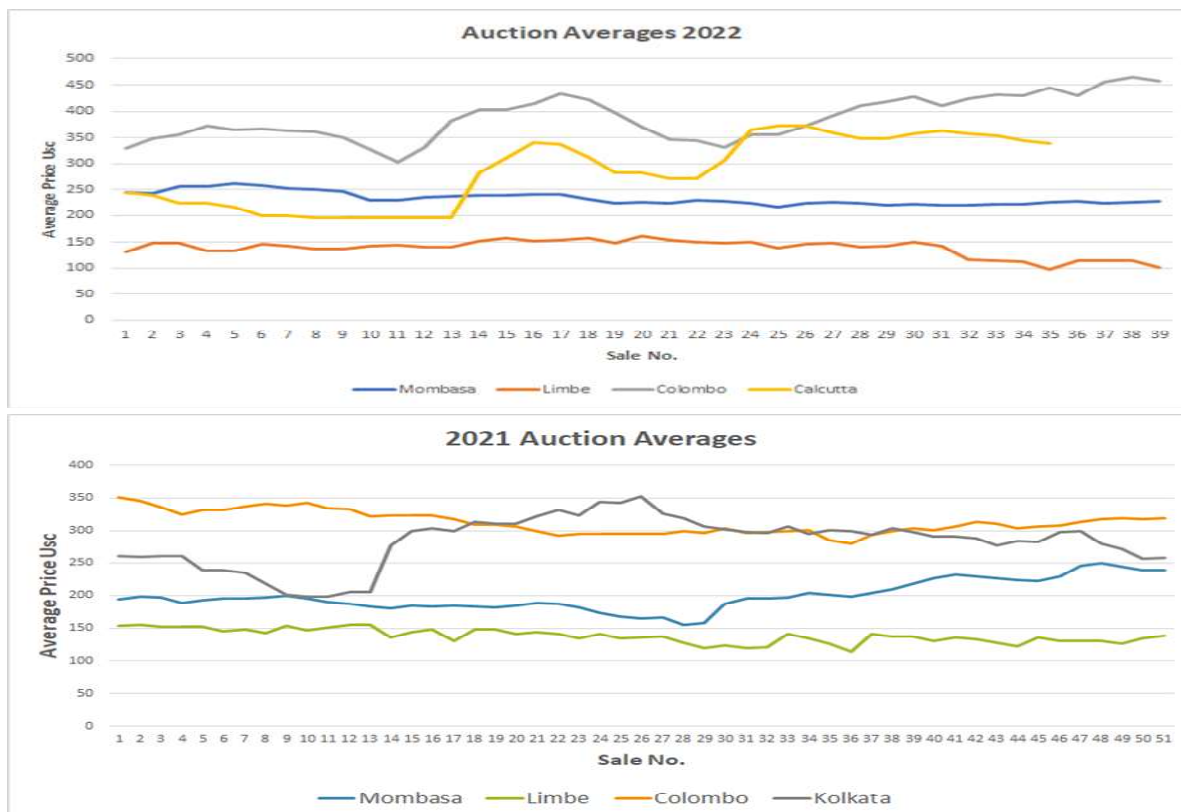
Market: CTC The market this week witnessed less demand. All categories were irregularly easier and saw substantial amount of withdrawals. **Buying Pattern:** HUL lent fair support while TCPL operated very selectively on the plainer categories. Internal segments were the mainstay of the market with some participation from Western India buyers. Exporters operated selectively on the larger broken.

Market: DUST There was better demand for the dust compared to leaf. Prices were generally irregular and easier following quality. **Buying Pattern: DUST** There was selective enquiry by HUL while TCPL was silent in the dust segment. Internal buyers were the mainstay of the market with some support from Western India destinations. There was very selective export enquiry.

Auction Offerings

	Week 48	Week 49	Week 50	Week 51
Centre	30-Nov	07-Dec	14th Dec	21st Dec
Mombasa	221,580	222,656	224,321	
Limbe				
Colombo	4.3m/kgs	4.9m/kgs		
Jakarta				
Calcutta	232,221	232,411	228,114	
Guwahati	195,293	186,013	183,412	
Chittagong				
Total	649,094	641,080	635,847	-

Auction Prices Trends



Regional Weather Conditions and World Crop

Kenya: Muranga: The week was sunny and showers at night with 51.5mm of rain recorded in **3 wet days**. The maximum and minimum temperatures were recorded at **(27°C / 10°C)** respectively. Crop intake averaged **85.7 tonnes/day** on a **6 day** plucking cycle.

Nyeri: The week was rainy with 26mm of rainfall recorded in **5 wet days**. The highest and lowest temperatures were 23°C & 11°C respectively. Crop intake averaged **38.2 tonnes/day** on a **6 day** plucking cycle.

Meru: The week was warm sunny and partly rainy in the afternoons and night. A total of **162.5mm** of rainfall was recorded on **5 wet days**. On average the highest and lowest temperatures was at **29°C & 18°C** respectively. Crop intake averaged **79.9 tonnes/day** on a **six day** plucking cycle.

Sotik: The week was sunny with showers in the night. The area received 2.5mm of rainfall recorded in one wet days. The highest and lowest temperatures were **25°C & 12°C** respectively. Factory utilization remained as last week's levels.

Kericho: Sunny conditions prevailed throughout the week with no rain recorded. Average temperatures were highs of **24° Celsius** and lows of **9° Celsius**. Crop intake went down by 6% com-



The trouble with weather forecasting is that it is right too often for us to ignore it and wrong too often for us to rely on it.

pared to previous week's levels. Crop on offer is steady but likely to appreciate with the current weather.

Uganda: Some rains were received in the tea growing areas with Fort Portal receiving **39mm** (87mm). Kibale received **57mm** (56mm,) Hoima received **20mm** (24mm) and Bushenyi received **37mm** (49mm) of rainfall. The maximum temperatures maintained at an of average 29°C while the minimum temperatures averaged 20°C. Crop levels have slightly improved.

DETAILED REGIONAL FORECAST for Nov 29th to 5th Dec 2022. The Highlands West of the Rift Valley, the Lake Victoria Basin and the Central and South Rift Valley (Kisii, Nyamira, Trans-Nzoia, Uasin-Gishu, Elgeyo-Marakwet, Nandi, Kericho, Bomet, Kakamega, Vihiga, Bungoma, West-Pokot, Siaya, Kisumu, Homa-

bay, Busia, Migori, Baringo, Nakuru and Narok Counties):

Mornings are likely to be generally sunny. Afternoon showers and thunderstorms are likely to occur over few places during the first half of the forecast period increasing to cover several places thereafter. Nights are expected to be partly cloudy but occasional showers may occur over few places. Maximum (day-time) temperatures are likely to drop to about 25o C in Suba but may rise to 31o C in Kisumu.

Highlands East of the Rift Valley (Nyandarua, Laikipia, Nyeri, Kirinyaga, Murang'a, Kiambu, Meru, Embu, Tharaka-Nithi and Nairobi Counties):

Mornings are likely to be cloudy, with occasional light rains, giving way to sunny intervals. Afternoon showers are likely to occur over few places. Nights are expected to be partly cloudy but occasional showers may occur over few places.

Kenya: Crop volumes are on the increase in some areas due to the warmer temperatures. However, the crop is low and on the recovery.

World Production from Main Producing Countries over the Past Twelve Months															Production over calendar years	
	Jan	Feb	Mar	Apr	May	Jun	Jul	Aug	Sep	Oct	Nov	Dec	Total	+ / -		
	Variance														2021	2020
Bangladesh	-	1.2	1.6	4.9	6.2	12.6	11.3	10.8	14.7	14.6	10.2	6.9	62.1	(3.2)	79.9	90.7
North India	-	1.8	51.8	71.2	100.2	117.0	133.3	166.4	166.8	167.3	103.0	49.7	808.5	35.2	773.3	1,033.4
South India	15.9	14.6	16.3	20.6	26.9	24.3	19.3	14.3	23.3	21.3	16.6	14.8	175.5	(8.4)	183.9	219.4
Sri Lanka	22.8	18.2	22.0	18.3	26.0	20.1	19.8	18.2	21.0	24.0	20.0	20.4	186.4	(45.8)	232.2	275.9
Kenya	48.7	40.8	46.3	41.2	50.0	43.3	33.9	33.6	43.4	49.0	50.7	54.4	304.2	(4.5)	342.3	570.6
Uganda	6.6	5.2	4.7	5.4	7.0	6.5	5.5	4.5	6.0	7.6	6.6	6.7	21.9	(4.0)	10.6	28.3
Tanzania	2.1	2.7	3.1	2.9	2.7	1.8	0.9	0.9	1.4	2.6	1.9	1.5	18.5	(1.7)	20.2	28.6
Rwanda	3.4	2.9	3.6	3.8	3.6	3.0	2.3	2.1	2.8	3.5	3.3	3.2	27.5	1.9	25.6	33.2
Malawi	4.8	7.0	7.1	7.1	4.5	1.9	1.3	2.0	3.6	2.9	1.4	5.3	39.3	(3.1)	42.4	45.2
Total	104.3	93.2	156.5	175.4	220.1	224.0	222.1	214.7	233.6	282.6	207.1	101.8	1,643.9			
Variance	(2.5)	(5.4)	34.0	11.6	5.1	30.4	16.9	10.2	-21.4	0.0	0.0	0.0	100.3	(33.6)	1,710.4	2,325.3

Monthly figures in "BLACK" are for 2022 whilst figures in "BLUE" are for 2021

Mombasa Auction—Weekly Sale Average Prices (All teas) 2022

Mombasa Auction - Weekly Sale Average Prices (All Teas)				Year : 2022			
Sale Nos.	Sale Date	Kilos sold Weekly	Kilos Sold monthly	Year : 2022 Av. Price US\$ weekly	Year : 2022 Av. Price US\$ monthly	Year : 2021 Av. Price US\$ monthly	Year : 2020 Av. Price US\$ monthly
1	04-Jan-22	11,166,757		2.44			
2	11-Jan-22	11,233,007		2.42			
3	18-Jan-22	11,588,410		2.53			
4	25-Jan-22	12,859,526		2.55			
				46,847,700	2.49	1.94	2.17
5	01-Feb-22	11,075,868		2.60			
6	08-Feb-22	11,184,062		2.57			
7	15-Feb-22	11,247,057		2.52			
8	22-Feb-22	11,683,128		2.50	2.55	1.95	2.03
9	01-Mar-22	11,147,057		2.44			
10	08-Mar-22	10,723,858		2.29			
11	15-Mar-22	11,492,906		2.30			
12	22-Mar-22	11,803,557		2.39			
13	29-Mar-22	11,843,379		2.36	2.36	1.92	1.92
3 mths Totals:					\$2.45 149,048,570 Kgs	\$1.94 146,474,310 Kgs	\$2.03 148,359,082 Kgs
14	05-Apr-22	11,483,104		2.38			
15	10-Apr-22	11,133,534		2.38			
16	20-Apr-22	10,758,738		2.39			
17	26-Apr-22	10,890,972		2.38			
				44,266,348	2.38	1.83	2.05
18	05-May-22	9,409,673		2.30			
19	10-May-22	9,537,586		2.23			
20	17-May-22	9,132,928		2.24			
21	24-May-22	10,373,511		2.22			
22	31-May-22	10,594,907		2.28	2.20	1.84	1.89
				49,048,605			
23	07-Jun-22	10,632,772		2.27			
24	14-Jun-22	10,105,643		2.22			
25	21-Jun-22	9,643,573		2.17			
26	28-Jun-22	9,765,460		2.24	2.23	1.74	1.79
6 mths Totals:					\$2.38 282,510,969 Kgs	\$1.87 292,688,228 Kgs	\$1.97 290,761,896 Kgs
27	05-Jul-22	9,751,228		2.25			
28	12-Jul-22	8,896,491		2.23			
29	19-Jul-22	9,258,643		2.21			
30	26-Jul-22	9,237,776		2.22	2.23	1.68	1.76
31	02-Aug-22	8,847,424		2.20			
32	08-Aug-22	9,252,926		2.23			
33	16-Aug-22	9,550,677		2.21			
34	23-Aug-22	8,735,668		2.21			
35	30-Aug-22	7,726,507		2.26	2.22	2.01	1.92
				44,113,201			
36	06-Sep-22	8,505,013		2.27			
37	13-Sep-22	8,552,262		2.23			
38	20-Sep-22	9,003,351		2.25			
39	27-Sep-22	8,501,257		2.33	2.27	2.08	1.94
9 mths Totals:					\$2.33 398,330,210.50	\$1.88 391,770,296 Kgs	\$1.94 406,720,334 Kgs
40	04-Oct-22	8,064,156		2.29			
41	11-Oct-22	8,874,645		2.33			
42	18-Oct-22	9,461,637		2.35			
43	25-Oct-22	9,243,544		2.41			
				35,643,982	2.35	2.26	1.90
44	31-Oct-22	9,871,819		2.45			
45	07-Nov-22	9,795,990		2.43			
46	14-Nov-22	9,622,916		2.34			
47	21-Nov-22	10,451,868		2.32			
48	28-Nov-22	10,326,458		2.27	2.36	2.31	1.90
				50,069,051			
49							
50							
51						2.38	2.10
Sale Nos. 1 to 51						503,893,400 Kgs	516,802,891 Kgs
Year end Totals :						\$1.97	\$1.93

Summary : Sale Averages by Country					
Year : 2022			Year : 2021		
Sale Nos: 1 to 43 (10 months)			Sale Nos: 1 to 43 (10 months)		
Country :	Kilos ' 000	Av. Prc US\$	Country :	Kilos ' 000	Av. Prc US\$
Kenya	344,865	2.49	Kenya	333,596	2.00
Uganda	58,405	1.34	Uganda	58,149	1.15
Tanzania	4,779	1.24	Tanzania	4,022	1.01
Rwanda	20,548	2.81	Rwanda	20,449	2.66
Burundi	5,353	2.29	Burundi	5,567	1.99
Malawi	-	-	Malawi	-	-
Mozambique	-	-	Mozambique	-	-
D R Congo	-	-	D R Congo	-	-
Madagascar	-	-	Madagascar	99	1.01
Ethiopia	24	1.48	Ethiopia	156	1.35
Total :	433,974	2.33		422,038	1.90

Year 2021 : 12M	503,893	1.97
Year 2020 : 12M	516,803	1.93
Year 2019 : 12M	454,013	2.04
Year 2018 : 12M	458,361	2.43
Year 2017 : 12M	397,646	2.81
Year 2016 : 12M	407,989	2.29
Year 2015 : 12M	358,639	2.73

Compiled by : Tea Brokers East Africa Ltd