



TEA BROKERS EAST AFRICA LIMITED

Telephone: +254 41 2221953 / 4
 Fax: +254 41 231 4480
 Mobile: +254 735 221953 / 729 403507
 E-mail: mail@tbeal.co.ke
 www.tbeal.net

Tea Trade Centre
 Nyerere Avenue
 PO Box 87296 - 80100



Tea Market Report: Sale 48 of 28th - 30th November, 2022

Reduced demand in most categories on offer with prices irregular following quality for the 221,580 packages (14.90m/kgs) available; 29.90% were neglected.

Leaf Grades (M2)

Offerings: 127,420 packages (8.41m/kgs) – 31.24% unsold.

BP1:

Best – Saw irregular enquiry and ranged between firm to USC9 dearer for most lines with a few selected invoices gaining between USC29 and USC56 to easier by USC18.

Brighter – Were irregular varying between firm to USC13 dearer and select lines advanced by up to USC35 to USC17 below last rates.

Mediums – KTDA mediums were fully firm for most teas but some lines were irregular ranging between USC20 dearer to USC16 below previous levels. Plantation mediums were steady to USC14 dearer.

Lower Mediums – Varied between firm to USC12 dearer to USC14 below previous prices.

Plainer – Were discounted by up to USC30 but a few selected invoices advanced by up to USC26.

PF1:

Best – Were mostly steady to USC10 dearer but a few teas

Current and Future Fresh Auction Offerings

Country	Sale 48 28 - 30 Nov'22		Sale 48 29 Nov - 1 Dec'21		Sale 49 5 - 7 Dec'22		Sale 50 13 - 14 Dec'22	
	MG	SG	MG	SG	MG	SG	MG	SG
Kenya	122,400	10,720	106,440	12,580	113,400	9,800	115,440	12,560
Uganda	16,560	9,320	14,720	8,200	16,500	9,280	17,760	9,921
Tanzania	600	20	2,340	900	920	80	400	20
Rwanda	6,600	1,180	5,520	820	8,680	1,820	8,000	1,900
Burundi	960	420	1,560	259	1,320	480	1,400	260
Zambia	0	0	0	0	0	0	0	0
Malawi	0	0	0	0	0	0	0	0
Madagascar	0	0	0	0	0	0	0	0
Zimbabwe	0	0	0	0	0	0	0	0
D R Congo	0	0	0	0	0	0	0	0
Mozambique	0	0	0	0	0	0	0	0
Ethiopia	0	0	0	0	0	0	0	0
Reprints	51,920	880	17,320	4,314	59,119	1,257	55,600	1,000
Total	147,120	21,660	130,580	22,759	140,820	21,460	143,000	24,661
	168,780		153,339		162,280		167,661	

eased by a similar margin.

Brighter – Irregular ranging between firm to USC8 dearer to easier by USC4.

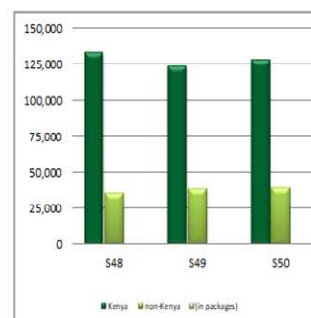
Mediums – KTDA mediums varied between steady to USC10 dearer to USC8 below last rates while plantation mediums met reduced competition and lost up to USC20.

Lower Mediums – Were discounted by up to USC24.

Plainer – Saw less enquiry and most teas lost up to USC17 with only a few lines dearer by up to USC8.

DUST Grades (M1)

Offerings: 71,620 packages (5.35m/kgs) – 34.29% unsold.



PDUST:

Best – Met irregular activity and varied between steady to USC19 dearer to USC20 below previous levels.

Cont...../ Page 2

continued

Brighter – Were firm to easier by up to USC18.

Mediums – KTDA mediums were mostly steady at last prices but a few select invoices lost up to USC26 with plantation mediums firm to USC11 easier.

Lower Medium – Were a weak feature and shed by up to USC30.

Plainer – Were discounted by up to USC20.

DUST1:

Best – Irregular ranging between firm to USC23 dearer to easier by USC12.

Brighter – Were steady to USC6 below last rates.

Mediums – KTDA mediums were

firm to USC10 easier for most of the teas with only a few lines advancing by up to USC13. Plantation mediums were irregularly easier by up to USC19 but selected invoices gained up to USC20.

Lower Medium – Lost up to USC20.

Plainer – Firm to USC13 easier.

Secondary Grades (S1)

Offerings: 22,540 packages (1.14m/kgs) –8.43% unsold.

In the Secondary Catalogues, best **BP**s gained while others tended easier; best **PF**s appreciated with others firm. Clean well sorted colour **Fannings** held value with

similar DUSTs firm. **Other Fannings** were barely steady while **DUSTs** sold at previous rates. **BMFs** were readily absorbed.

Markets

Pakistan Packers, Bazaar, and Afghanistan lent strong support with **Yemen** and **other Middle Eastern countries** maintaining good enquiry. **Kazakhstan, other CIS states** and **UK** were more selective while **Sudan, Egyptian Packers** and **Iran** reduced activity. **Russia** were less active while **Local Packers** maintained interest. **Somalia** maintained activity at the lower end of the market.

Mombasa Auction Hammer Market Analysis—Sale No 48/2022

	Category (Band)	Percentage volume sold	Average Price ranges (for the marks within the category)		Min-Max Prices per grade							
					BP1		PF1		PD		DUST1	
			Min	Max	Min	Max	Min	Max	Min	Max	Min	Max
1	Best	88%	2.78	3.59	2.79	5.12	2.8	3.26	2.7	3	2.7	3.35
2	Below Best	89%	2.68	3.05	2.5	4.54	2.65	2.9	2.63	2.96	2.56	2.79
3	Good	38%	2.04	2.62	2.2	2.74	2.1	2.8	2	2.74	2.15	2.65
4	Best Medium	76%	1.74	2.24	2	2.46	1.85	2.32	1.95	2.4	1.74	2.19
5	Medium	61%	1.44	2.08	1.21	2.3	1.44	2.18	1.5	2.1	1.5	2.11
6	Lower Medium	87%	1.35	1.71	1.08	1.54	1.3	1.76	1.34	1.75	1.35	1.75
7	Plain	96%	1.08	1.6	1.08	1.4	1.2	1.5	1.3	1.42	1.28	1.62
	Totals	63%	1.08	3.59	1.08	5.12	1.2	3.26	1.3	3	1.28	3.35
	Category (Band)	Percentage of Total Sold	Average Prices per grade								Totals	
			BP1		PF1		PD		DUST1			
			Kgs	Avg	Kgs	Avg	Kgs	Avg	Kgs	Avg	Kgs	Avg
1	Best	12%	105,065	3.11	563,853	2.91	239,812	2.76	132,782	2.79	1,041,512	2.88
2	Below Best	28%	251,043	2.85	1,371,284	2.79	538,633	2.71	258,741	2.71	2,419,701	2.77
3	Good	26%	378,704	2.54	1,109,969	2.46	532,557	2.45	152,104	2.4	2,173,334	2.47
4	Best Medium	12%	78,352	2.25	435,280	2.06	431,436	2.1	54,760	2.06	999,828	2.09
5	Medium	11%	86,272	1.9	461,630	1.84	339,174	1.84	78,107	1.85	965,183	1.85
6	Lower Medium	7%	66,102	1.29	209,341	1.54	172,012	1.56	111,848	1.54	559,303	1.52
7	Plain	4%	45,994	1.19	93,569	1.34	87,307	1.36	107,872	1.49	334,742	1.37
	Totals	100%	1,011,532	2.46	4,244,926	2.45	2,340,931	2.29	896,214	2.26	8,493,603	2.39

Average Auction Hammer Quantities and Prices by Country

Country of Origin	Main			Secondary			Total			Total for Corresponding Sale for Last Year		
	Pkgs	Kgs	USC	Pkgs	Kgs	USC	Pkgs	Kgs	USC	Pkgs	Kgs	USC
Kenya	103,700	7,252,009	247	9,880	503,691	142	113,580	7,755,701	240	111,335	7,577,541	271
Uganda	14,240	899,242	150	9,060	436,338	114	23,300	1,335,580	138	22,540	1,301,726	112
Tanzania	520	32,596	156	20	700	95	540	33,296	154	2,660	152,940	130
Rwanda	5,400	374,424	290	1,140	73,340	253	6,540	447,764	283	5,780	398,832	322
Burundi	880	55,232	240	400	18,928	146	1,280	74,160	216	1,719	106,484	239
Zambia	-	-	-	-	-	-	-	-	-	-	-	-
Malawi	-	-	-	-	-	-	-	-	-	-	-	-
Mozambique	-	-	-	-	-	-	-	-	-	-	-	-
Madagascar	-	-	-	-	-	-	-	-	-	-	-	-
Zimbabwe	-	-	-	-	-	-	-	-	-	-	-	-
D R Congo	-	-	-	-	-	-	-	-	-	-	-	-
Ethiopia	-	-	-	-	-	-	-	-	-	-	-	-
Total	124,740	8,613,503	238	20,500	1,032,997	138	145,240	9,646,501	228	144,034	9,537,523	249

Sale Number	Previous Sale's Quantities and Prices									Total for Corresponding Sale for Last Year		
	Main			Secondary			Total			Pkg	Kgs	USC
Sale 47/22	126,060	8,719,647	242	18,818	960,674	142	144,878	9,680,322	232			
Sale 46/22	114,239	7,901,518	244	17,080	870,668	144	131,319	8,772,186	234	152,160	10,101,019	229
Sale 45/22	120,660	8,339,127	254	17,900	898,139	145	138,560	9,237,266	243	148,233	9,785,907	222
Sale 44/22	122,760	8,490,714	256	16,980	850,125	143	139,740	9,340,838	246	116,600	7,755,459	224
Sale 43/22	116,960	8,077,622	253	16,420	815,579	139	133,380	8,893,200	242	112,659	7,427,140	226
Sale 42/22	114,260	7,889,054	247	15,120	751,803	139	129,380	8,640,857	237	108,935	7,147,669	229

Average Auction Hammer Prices by Grade and Country

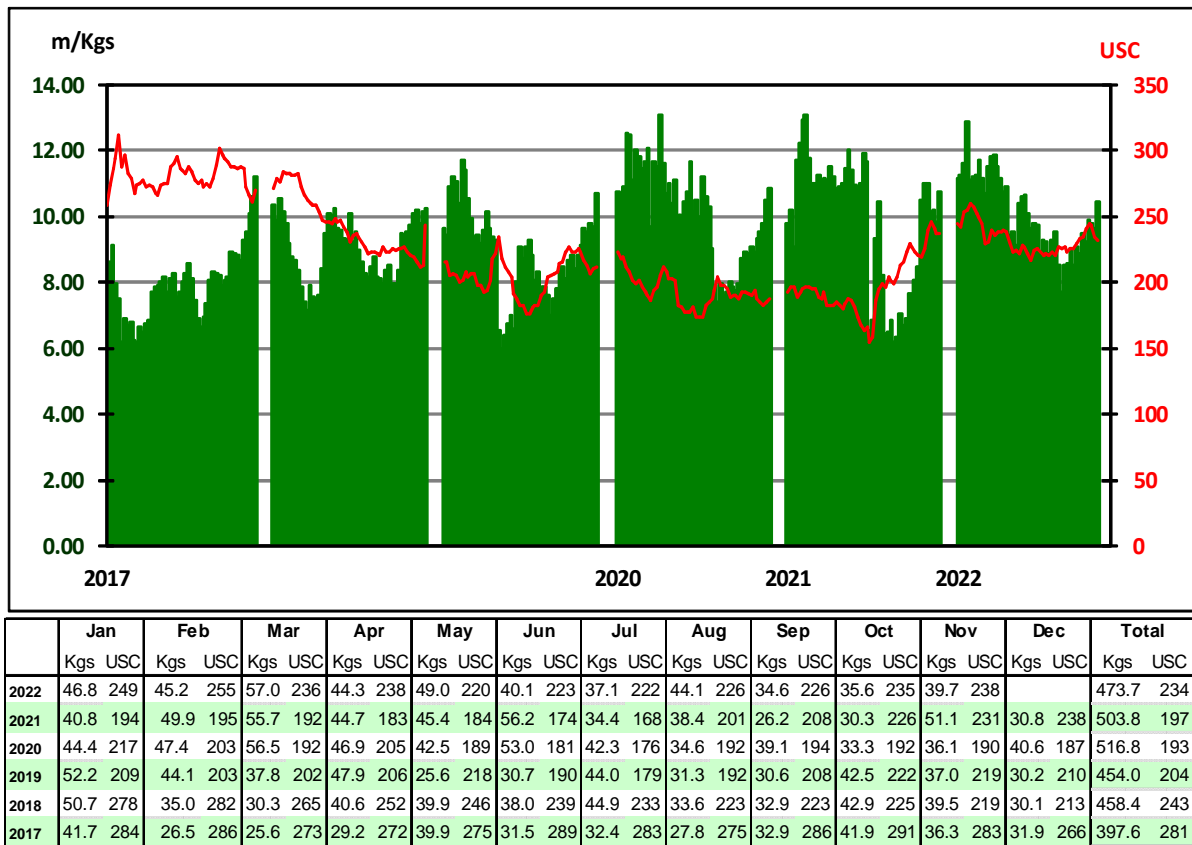
Country of Origin	Current Sale's Prices per Grade											Corresponding Prices per Grade for Last Year										
	BP1	PF1	PD	D1	BP/2	PF/2	D/2	F/1	BMF	Av	BP1	PF1	PD	D1	BP/2	PF/2	D/2	F/1	BMF	Av		
Kenya	255	251	237	242	153	159	147	142	99	240	261	295	274	270	109	153	110	119	72	271		
Uganda	131	153	153	150	123	132	138	110	94	138	100	132	129	119	85	105	90	92	70	112		
Tanzania	121	158	171	163	-	-	-	-	95	154	115	146	152	113	85	-	92	103	71	130		
Rwanda	311	284	283	277	289	247	239	194	114	283	341	344	326	317	246	279	194	150	71	322		
Burundi	247	244	230	220	-	-	143	148	-	216	211	297	267	246	-	-	161	143	-	239		
Zambia	-	-	-	-	-	-	-	-	-	-	-	-	-	-	-	-	-	-	-	-		
Malawi	-	-	-	-	-	-	-	-	-	-	-	-	-	-	-	-	-	-	-	-		
Mozambique	-	-	-	-	-	-	-	-	-	-	-	-	-	-	-	-	-	-	-	-		
Madagascar	-	-	-	-	-	-	-	-	-	-	-	-	-	-	-	-	-	-	-	-		
Zimbabwe	-	-	-	-	-	-	-	-	-	-	-	-	-	-	-	-	-	-	-	-		
D R Congo	-	-	-	-	-	-	-	-	-	-	-	-	-	-	-	-	-	-	-	-		
Ethiopia	-	-	-	-	-	-	-	-	-	-	-	-	-	-	-	-	-	-	-	-		
	246	245	228	226	203	148	153	128	97	228	240	282	257	250	122	131	113	109	71	249		

Sale Number	Previous Sale's Prices per Grade											Corresponding Prices per Grade for Previous Year										
	BP1	PF1	PD	D1	BP/2	PF/2	D/2	F/1	BMF	Av	BP1	PF1	PD	D1	BP/2	PF/2	D/2	F/1	BMF	Av		
Sale 47/22	255	245	232	238	212	154	153	135	98	232	245	278	248	252	114	122	122	109	70	245		
Sale 46/22	247	253	231	236	209	152	156	137	100	234	210	263	230	215	112	128	112	107	73	229		
Sale 45/22	257	259	244	259	204	158	164	142	100	243	206	248	229	227	135	134	107	113	71	222		
Sale 44/22	257	261	241	278	185	163	156	144	99	246	212	248	234	234	121	122	100	110	70	224		
Sale 43/22	251	258	240	273	166	156	157	139	101	242	194	259	235	237	120	134	112	120	70	226		
Sale 42/22	247	253	237	253	194	154	154	135	101	237	225	266	231	231	138	135	115	127	72	229		

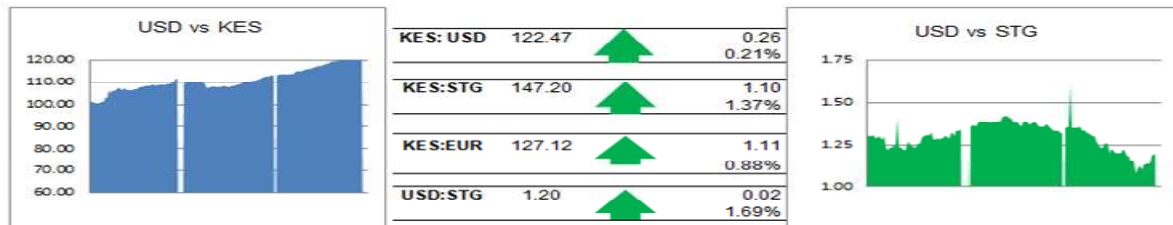
Average Auction Prices and Quantities by Country

Country	Previous Sale Sale 47/22		Year To Date 2022		Last Year Sale 47/21		Year To Date 2021		Variance Year To Date	
	Kgs	USC	Kgs	USC	Kgs	USC	Kgs	USC	Kgs	USC
Kenya	8,311,282	244	376,668,639	249	8,634,141	263	365,861,172	204	10,807,467	45
Uganda	1,428,585	144	63,916,173	135	1,645,759	111	64,434,942	114	-518,769	21
Tanzania	83,316	163	5,124,578	125	128,104	103	4,386,308	101	738,270	24
Rwanda	566,104	296	22,337,482	282	455,728	316	22,130,220	270	207,262	12
Burundi	62,581	217	5,645,075	229	108,588	234	5,905,257	201	-260,182	28
Zambia	-	-	-	-	-	-	-	-	0	0
Malawi	-	-	-	-	-	-	-	-	0	0
Mozambique	-	-	-	-	-	-	-	-	0	0
Madagascar	-	-	-	-	-	-	98,943	101	-98,943	-101
Zimbabwe	-	-	-	-	-	-	-	-	0	0
D R Congo	-	-	-	-	-	-	-	-	0	0
Ethiopia	-	-	23,839	148	-	-	155,720	135	-131,881	13
Total	10,451,868	232	473,715,786	234	10,972,320	240	462,972,562	194	10,743,224	40

Mombasa Weekly Average Auction Quantities and Prices 2017—2022



Exchange Rates (2020-2022)



During the week the Kenya Shilling traded between KES 122.50 -122.90 and reached 122.55 at its lowest end week. Expectations are that the Kenya Shilling against US Dollar will trade at the level of 122.50 - 122.90 in the coming week.

(These figures are given as a guide and readers are advised not to use them as a basis for business transactions)

Auction Quantities

Country Offerings	This Week Sale 48/22		Year To Date 2022		Year To Date 2021		Variance Year To Date	
	Packages	Kgs	Packages	Kgs	Packages	Kgs	Packages	Kgs
Kenya	133,120	9,121,652	5,903,887	402,585,306	5,614,326	378,774,076	289,561	23,811,230
Uganda	25,880	1,472,034	1,143,517	65,971,751	1,143,824	66,206,434	-307	-234,683
Tanzania	620	38,060	101,120	5,464,626	93,239	5,068,548	7,881	396,078
Rwanda	7,780	533,476	330,740	22,803,249	326,259	22,367,032	4,481	436,217
Burundi	1,380	81,204	96,278	5,817,260	92,418	5,721,100	3,860	96,160
Zambia	0	0	0	0	960	56,740	-960	-56,740
Malawi	0	0	1,120	65,848	0	0	1,120	65,848
Mozambique	0	0	0	0	0	0	0	0
Madagascar	0	0	0	0	2,020	99,835	-2,020	-99,835
Zimbabwe	0	0	0	0	0	0	0	0
D R Congo	0	0	0	0	0	0	0	0
Ethiopia	0	0	400	22,879	2,300	130,640	-1,900	-107,761
Total	168,780	11,246,426	7,577,062	502,730,919	7,275,346	478,424,405	301,716	24,306,514

Sellers' Main Grade Quantities (in Packages)

Origin	BP 1			PF 1			PD			D 1			Total		
	S 48	S 49	S 50	S 48	S 49	S 50	S 48	S 49	S 50	S 48	S 49	S 50	S 48	S 49	S 50
KTDA	17720	17837	17320	65840	71060	65520	31240	36040	34640	8040	6600	7000	122840	131537	124480
Unilever Tea	280	240	160	120	160	260	120	120	180	1360	1600	420	1880	2120	1020
James Finlay	680	920	760	1480	1320	1280	1360	1120	760	0	0	0	3520	3360	2800
Eastern Produce	920	840	1040	3160	3520	2840	1840	2000	2200	640	600	680	6560	6960	6760
Others (K)	4400	3200	4960	17920	13120	19360	15020	11100	15500	2120	1960	3220	39460	29380	43040
Uganda	2660	2640	3600	6640	6479	6920	5480	6340	6680	2500	2720	2720	17280	18179	19920
Tanzania	590	590	590	800	820	900	400	560	640	460	440	440	2250	2410	2570
Rwanda	2680	3120	3320	3200	3700	3600	1560	2240	1800	480	840	760	7920	9900	9480
Burundi	520	640	720	240	520	440	320	320	360	280	280	320	1360	1760	1840
DR Congo	0	0	0	0	0	0	0	0	0	0	0	0	0	0	0
Malawi	0	0	0	80	80	80	80	80	80	0	0	0	160	160	160
Zimbabwe	0	0	0	0	0	0	0	0	0	0	0	0	0	0	0
Madagascar	0	0	0	0	0	0	0	0	0	0	0	0	0	0	0
Mozambique	0	0	0	0	0	0	0	0	0	0	0	0	0	0	0
Zambia	0	0	0	0	0	0	0	0	0	0	0	0	0	0	0
Ethiopia	0	0	0	0	0	0	160	160	160	0	0	0	160	160	160
Total	30450	30027	32470	99480	99480	99480	1E+05	57580	60080	63000	15880	15040	15560	203390	205926

Buyer Purchases of Teas Offered by Grade (in Packages)

BUYER	%	Total	BP1	PF1	PD	D1	BP2	PF2	D2	FNGS	BMF
1 CHAI TRADING COMPANY LTD	8.27	18,320	1,640	13,200	2,000	840		340	120	180	
2 GLOBAL TEA & COMMODITIES KENYA LTD.	8.18	18,120	1,640	8,760	1,740	1,520	20	180	1,040	1,280	1,940
3 CARGILL KENYA LTD	5.52	12,220	40	9,320	2,760			60		40	
4 SSOE (KENYA) LIMITED	5.21	11,540	1,400	4,080	3,080	1,320		560	500	560	40
5 VAN REES KENYA LIMITED	4.61	10,220	80	5,500	2,500	680		1,160		300	
6 MOMBASA COFFEE LTD	4.17	9,240	80	1,320	4,760	2,800	280				
7 JAMES FINLAY MOMBASA LIMITED	4.12	9,120	120	3,720	4,680	320	60			220	
8 COFFTEA AGENCIES LTD	3.03	6,720	3,440	1,480	240			300		1,260	
9 LAB INTERNATIONAL KENYA LTD	2.61	5,780		760	3,560	1,400		60			
10 DEVCHAND KESHAVJI (K) LTD	2.56	5,680		5,680							
11 MIZAJ AFRICA LTD	1.86	4,120		720	3,320	80					
12 CUP OF JOE LTD	1.84	4,080	3,960				120				
13 M.J. CLARKE LTD	1.44	3,180		400	1,560	120		80		1,020	
14 ABBA TRADERS LTD	1.28	2,840	40	760	1,080	360	260	200	140		
15 SWAFI FOODS LIMITED	0.93	2,060	720	600		80	100	120	300	140	
16 ALIBHAI RAMJI (MSA) LTD	0.90	2,000		1,400		360		160	40	40	
17 AFRIBRIDGE TRADE EXPORTERS LTD	0.87	1,920		1,720		200					
18 SHAKAB EXPORT & IMPORT CO. LTD	0.83	1,840	880	600	80	40	220		20		
19 SUMMER LINER CO. LTD	0.82	1,820	580		40	200	160	60		640	140
20 IMPERIAL TEAS (EPZ) LTD	0.72	1,600	360	80	280	580		80	100	120	
21 AL EMIR LIMITED	0.65	1,440		1,120	80	120		60	40	20	
22 TRANS-ATLANTIC TRADING Co. LTD	0.57	1,260		400		40	60	140	560	40	20
23 RANFER TEAS KENYA LTD	0.44	980		400	360	80		140			
24 EMPIRE KENYA (EPZ) LTD	0.42	940	80	680	40			120		20	
25 AIMCO ENTERPRISES LTD	0.42	920				40			40	280	560
26 TUSHA TEA LTD	0.40	880	880								
27 MAISHA COMMODITIES	0.33	740			40	80		100	40	480	
28 LULA TRADING COMPANY	0.29	640	200				40			220	180
29 DRINCO INTERNATIONAL LIMITED	0.27	600		600							
30 INDO-AFRICAN TEA CO. (K) LTD.	0.27	600	360	160	80						
31 LINDOP & COMPANY (KENYA) LTD	0.26	580	120	320		80			60		
32 MAYMUN ENTERPRISES	0.18	400									400
33 PWANI HAULIERS	0.18	400									400
34 STANSAND (A) LTD	0.18	400	120	280							
35 TROPICAL CROPS & COMMODITIES	0.16	360	40				60	40		40	180
36 AFRO TEAS LTD	0.15	340			40			20		240	40
37 GREEN LEAF TRADING CO. LTD	0.14	300								300	
38 KIRINDO TRADERS LIMITED	0.12	260	40				40			20	160
39 CAPITAL TEA TRADERS	0.10	220								60	160
40 TEAVANA TEA STORE LTD	0.07	160									160
41 NALA TEA COMPANY LTD	0.06	140				80			60		
42 GREAT WHITE PACKERS LTD	0.05	100				80	20				
43 SARDIA INTERNATIONAL CO. LTD	0.04	80					80				
44 LUTEX LIMITED	0.02	40					20			20	
45 RIOTANA TRADING LIMITED	0.02	40	40								
Total Sold	65.56	145,240	16,860	64,060	32,320	11,500	1,540	3,980	3,060	7,540	4,380
Withdrawn	-										
Unsold	34.43	76,280	12,760	33,780	24,580	3,280	140	780	220	620	120
% Unsold			43	35	43	22	8	16	7	8	3
Grand Total	100.00	221,520	29,620	97,840	56,900	14,780	1,680	4,760	3,280	8,160	4,500

Sale 47/22	65.88%	144,878	20,440	58,500	35,240	11,880	1,440	3,779	2,900	6,499	4,200
Sale 46/22	62.26%	131,319	13,860	56,600	32,799	10,980	1,460	3,140	2,720	6,240	3,520
Sale 45/22	67.37%	138,560	16,680	59,440	34,440	10,100	1,260	3,140	2,620	6,360	4,520
Sale 44/22	70.73%	139,740	15,720	61,960	35,040	10,040	900	3,340	2,480	5,660	4,600
Sale 43/22	68.59%	133,360	17,100	55,620	35,160	9,080	1,140	2,960	2,280	5,520	4,500
Sale 42/22	70.30%	129,380	17,800	53,000	35,900	7,560	920	2,660	2,480	4,580	4,480

Other Tea Auction Centres

Colombo: at Sale 46 held on 22nd and 23rd November, 2022. The 0.62Mkg of Ex estate teas on offer met with fair demand. Select Best Western High Grown BOPs were firm, the below best and plainer varieties were irregular. Select Best Western High Grown BOPFs were firm, however the below best and plainer varieties were irregular following quality. Nuwara Eliya BOPs were firm, the BOPFs were tending irregular following quality. Uda Pussellawa BOPs were easier, the BOPFs were firm to irregularly lower. UVA BOPs / BOPFs were firm. Low grown CTC BP1s were firm on last levels, the High and Medium sorts too followed a similar trend. Low Grown CTC PF1s were barely steady, the High and medium sorts were irregularly dearer. The 2.0Mkg of Low Grown teas which were on offer met with good demand. In the Leafy segment, OPs were firm, OPAs appreciated a few rupees. Select best OP1s were lower to last, others were dearer. In the Semi Leafy segment, BOP1s were lower. Pekoe varieties were firm, Pekoe1s gained a few rupees. In the Small Leaf segment, FBOPs were firm to easier. FBOPF varieties continued to show improved interest. FBOPF1s were firm. BOPF.SP, BOPF, BOP.SP and BOPs too met with good demand. Premium Flowery teas met with improved demand. Turkey, Russia, Iran and the C.I.S countries lent fair support. Libya and Iraq were active.

Chittagong: at Sale 29 held on the 21st November, 2022, **CTC LEAF:** 59,199 packages of Current Season teas on offer continued to meet with a strong demand. **BROKENs:** There was only a few bright liquoring Broken available which were well sought after at around last levels. Other varieties also saw good demand but were a little easier following quality except the plainest which were often discounted with fair withdrawals. BLF teas saw a limited demand and were discounted with quite heavy withdrawals. **FANNINGS:** Bright Fannings were strongly competed for and often advanced by Tk.5/- and more per kg. Good Fannings were also in strong demand and were mostly firm. Medium types met with a fairly good demand and were just about steady. Plain types similarly saw some demand but mostly eased with fair withdrawals. BLF teas saw only a limited demand and were discounted with quite heavy withdrawal. **CTC DUST:** 11,946 packages of Current Season teas on offer met with good general demand. Select few good liquoring well made Dusts met with good competition and advanced by Tk.10/-

to Tk.15/-. Other good liquoring Dusts also sold well at around last levels. Mediums were fully firm to slightly dearer closely following quality. Plain and BLF Dusts were an easier market and saw fair withdrawals. Blenders lent strong support with fair interest from the Loose tea buyers. **COMMENTS:** A bright feature of the sale was the strong competition for best liquoring Fannings on offer which mostly advanced in price. Other brighter varieties also witnessed quite a good demand at about firm rates. Blenders were more active with fair interest from the Loose tea buyers. Good liquoring Dusts were a strong feature of the sale.

Cochin: at Sale 46 held on the 16th November, 2022. **CTC Leaf:** Good demand. All grades sold irregularly around last levels. **Buying pattern:** Up country buyers operated. **ORTHODOX Leaf:** Good demand. High grown, medium whole leaf and broken grades sold at irregular levels to occasionally dearer levels. Fannings showed subdued demand and was easier. **Buying pattern:** CIS operating with support from ME. **Dust:** Good Demand. Good marks and better mediums sold irregular and lower by 1-2c. Plainer sorts fully firm to occasionally dearer by 1-2c. **Buying pattern:** Major blenders and internal buyers active.

Calcutta: at Sale 47 held on the 22nd to 24th November, 2022, **CTC:** There was fair demand for better and good Assam categories which met with interest at lower levels resulting in large weights of these teas outlisted. Cleaner, well-made medium sorts met with similar demand to the previous week and sold at steady rates. Better Dooars were irregular and sold around at irregular levels closely following quality. Plainer Dooars were a steady market. **Dust:** There was good demand. Good liquoring Assams were barely steady. Cleaner, medium

sorts were around last levels. M/s Hindustan Unilever operated selectively on better Assams in the leaf market with more activity on medium sorts. They were active on good liquoring Assams in the dust market. M/s Tata Consumer Products operated on medium Assams with some inquiry on plainer Dooars in the leaf market. They were selective in the dust market. Western India buyers were active on better Assams. Export interest was very limited. Local buyers were active on the Dooars & other clean, well-made descriptions.

Guwahati: at Sale 47 held on the 23rd November, 2022, there were 215,860 packages on offer.

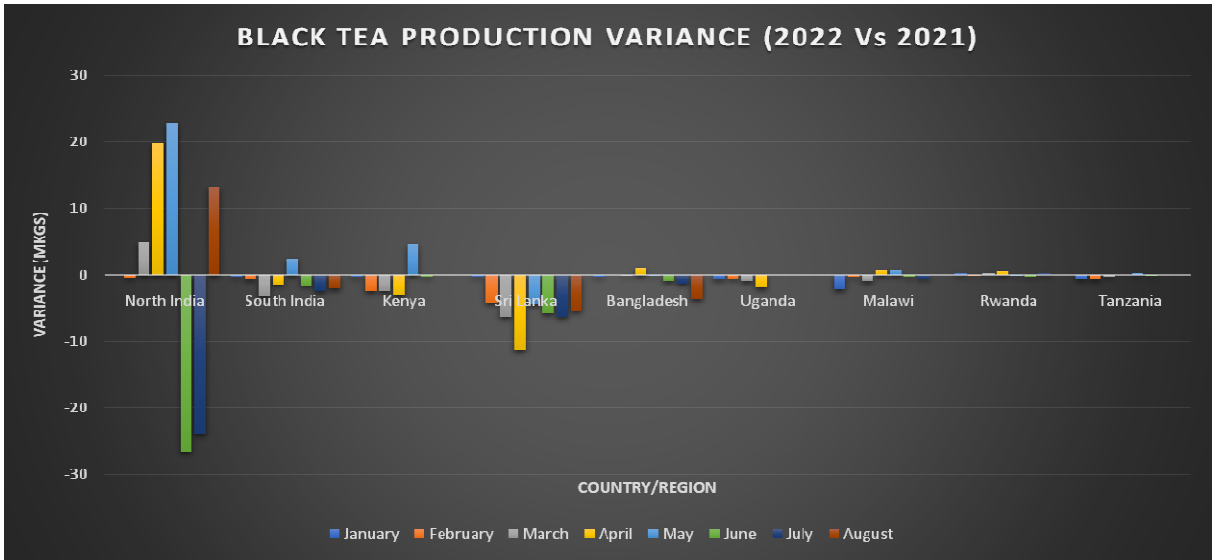
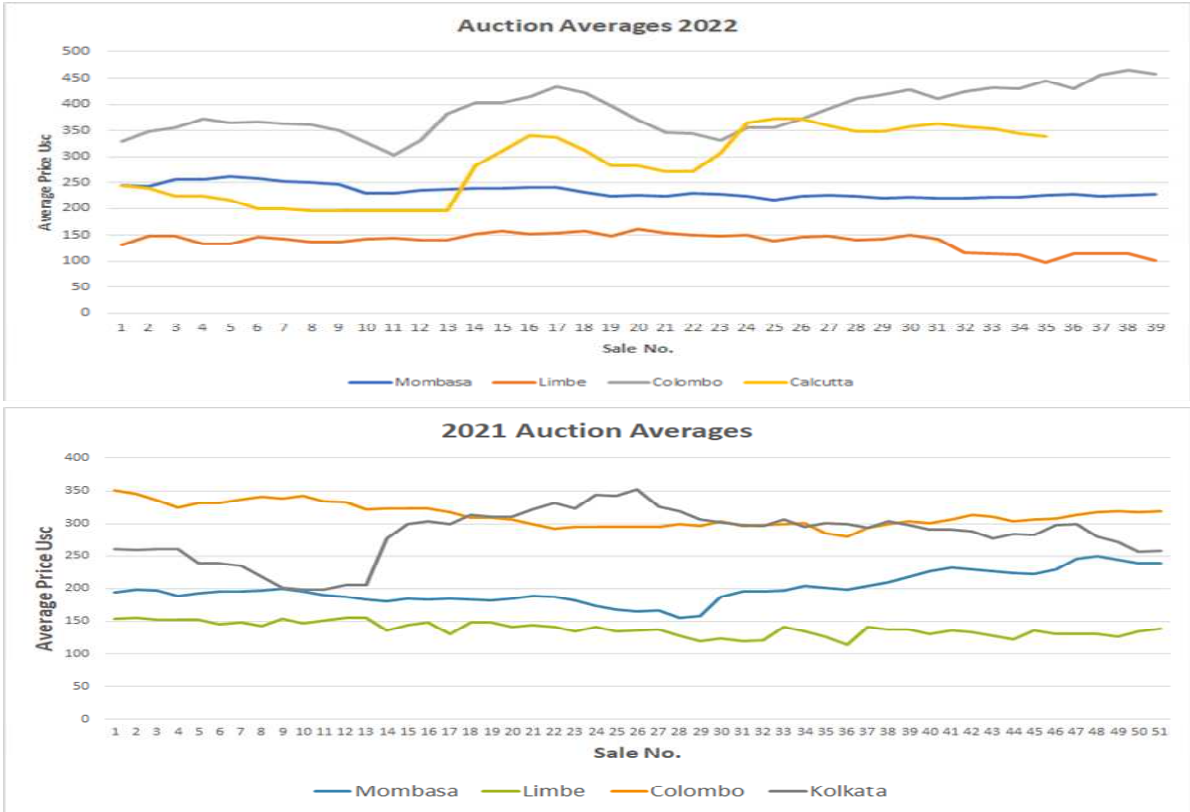
Market: CTC There was less demand. Select better liquoring sorts were barely steady. Remainder sold at irregular rates following quality. The browner sorts witnessed substantial amount of withdrawals. **Buying Pattern:** HUL lent fair support. TCPL operated very selectively on the plainer teas. Internal buyers were the mainstay of the market with support from Western India buyers in better liquoring teas. Exporters were very selective.

Market: DUST There was good demand. Select good liquoring teas sold at irregular around last. Remainder tended easier following quality. **Buying Pattern: DUST** There was fair support from HUL while TCPL was silent. Western India buyers participated actively with their fair support from other internal destinations.

Auction Offerings

	Week 48	Week 49	Week 50	Week 51
Centre	30-Nov	07-Dec	14th Dec	21st Dec
Mombasa	221,580	222,656	224,321	
Limbe				
Colombo	4.3m/kgs	4.9m/kgs		
Jakarta				
Calcutta	232,221	232,411	228,114	
Guwahati	195,293	186,013	183,412	
Chittagong				
Total	649,094	641,080	635,847	-

Auction Prices Trends



Regional Weather Conditions and World Crop

Kenya: Muranga: The week was sunny and showers at night with **3.0mm** of rain recorded in **3** wet days. The maximum and minimum temperatures were recorded at **(26°C / 10°C)** respectively. Crop intake averaged **83.9** tonnes/day on a **6** day plucking cycle.

Nyeri: The week was rainy with 40.8mm of rainfall recorded in **5** wet days. The highest and lowest temperatures were 23°C & 13°C respectively. Crop intake averaged **30.1** tonnes/day on a **6** day plucking cycle.

Meru: The week was warm sunny and partly rainy in the mornings followed by warm and sunny afternoons. A total of **137mm** of rainfall was recorded on 3 wet days. On average the highest and lowest temperatures was at **27°C & 16°C** respectively. Crop intake averaged **49.3** tonnes/day on a **six** day plucking cycle.

Sotik: The week was cold and cloudy accompanied with some showers. The area received 19.6mm of rainfall spread in five days. The highest and lowest temperatures were **25°C & 12°C** respectively. Factory utilization remained as last week's levels.

Kericho: Partly sunny week with moderate overcast. A total of **45.4mm** of rainfall was recorded. Average temperatures were highs of **22° Celsius** and lows of **10° Celsius**. Crop intake went down by



The trouble with weather forecasting is that it is right too often for us to ignore it and wrong too often for us to rely on it.

3% compared to previous week's levels. Crop on offer is likely to maintain previous week's levels.

Uganda: Some rains were received in the tea growing areas with Fort Portal receiving **87mm** (78mm). Kibale received **56mm** (54mm,) Hoima received **45mm** (91mm) and Bushenyi received **49mm** (57mm) of rainfall. The maximum temperatures maintained at an of average 29°C while the minimum temperatures averaged 16°C. Crop levels have slightly improved.

DETAILED REGIONAL FORECAST for Nov 29th to 5th Dec 2022. The Highlands West of the Rift Valley, the Lake Victoria Basin and the Central and South Rift Valley (Kisii, Nyamira, Trans-Nzoia, Uasin-Gishu, Elgeyo-Marakwet, Nandi, Kericho, Bomet, Kakamega, Vihiga, Bungoma, West-Pokot, Siaya, Kisumu, Homa-

bay, Busia, Migori, Baringo, Nakuru and Narok Counties): Mornings are likely to be generally sunny though light rains may occur over few places. Afternoon showers and thunderstorms are likely to occur over few places. Nights are expected to be partly cloudy but occasional showers may occur over few places.

Highlands East of the Rift Valley (Nyandarua, Laikipia, Nyeri, Kirinyaga, Murang'a, Kiambu, Meru, Embu, Tharaka-Nithi and Nairobi Counties):

Mornings are likely to be cloudy, with occasional light rains, giving way to sunny intervals. Afternoon showers are likely to occur over few places at times spreading to several places. Nights are expected to be partly cloudy

Crop production Kenya: Crop volumes are on the increase in some areas due to the warmer temperatures. However, the crop is low and on the recovery in places hit by hail a couple of weeks ago.

Uganda: Crop levels have slightly improved.

Malawi: Crop intake remain very low.

	World Production from Main Producing Countries over the Past Twelve Months														Production over calendar years	
	Jan	Feb	Mar	Apr	May	Jun	Jul	Aug	Sep	Oct	Nov	Dec	Total	+ / -	2021	2020
	Variance															
Bangladesh	-	1.2	1.6	4.9	6.2	12.6	11.3	10.8	14.7	14.6	10.2	6.9	62.1	(3.2)	79.9	90.7
North India	-	1.8	51.8	71.2	100.2	117.0	133.3	166.4	166.8	167.3	103.0	49.7	808.5	35.2	773.3	1,033.4
South India	15.9	14.6	16.3	20.6	26.9	24.3	19.3	14.3	23.3	21.3	16.6	14.8	175.5	(8.4)	183.9	219.4
Sri Lanka	22.8	18.2	22.0	18.3	26.0	20.1	19.8	18.2	21.0	24.0	20.0	20.4	186.4	(45.8)	232.2	275.9
Kenya	48.7	40.8	46.3	41.2	50.0	43.3	33.9	33.6	43.4	49.0	50.7	54.4	304.2	(4.5)	342.3	570.6
Uganda	6.6	5.2	4.7	5.4	7.0	6.5	5.5	4.5	6.0	7.6	6.6	6.7	21.9	(4.0)	10.6	28.3
Tanzania	2.1	2.7	3.1	2.9	2.7	1.8	0.9	0.9	1.4	2.6	1.9	1.5	18.5	(1.7)	20.2	28.6
Rwanda	3.4	2.9	3.6	3.8	3.6	3.0	2.3	2.1	2.8	3.5	3.3	3.2	27.5	1.9	25.6	33.2
Malawi	4.8	7.0	7.1	7.1	4.5	1.9	1.3	2.0	3.6	2.9	1.4	5.3	39.3	(3.1)	42.4	45.2
Total	104.3	93.2	156.5	175.4	220.1	224.0	222.1	214.7	233.6	282.6	207.1	101.8	1,643.9	(33.6)	1,710.4	2,325.3
Variance	(2.5)	(5.4)	34.0	11.6	5.1	30.4	16.9	10.2	-21.4	0.0	0.0	0.0	100.3			

Monthly figures in "BLACK" are for 2022 whilst figures in "BLUE" are for 2021

Mombasa Auction—Weekly Sale Average Prices (All teas) 2022

Sale Nos.	Sale Date	Kilos sold Weekly	Kilos Sold monthly	Year : 2022	Year : 2022	Year : 2021	Year : 2020
				Av. Price US\$ weekly	Av. Price US\$ monthly	Av. Price US\$ monthly	Av. Price US\$ monthly
1	04-Jan-22	11,166,757		2.44			
2	11-Jan-22	11,233,007		2.42			
3	18-Jan-22	11,588,410		2.53			
4	25-Jan-22	12,859,526		2.55			
			46,847,700		2.49	1.94	2.17
5	01-Feb-22	11,075,868		2.60			
6	08-Feb-22	11,184,062		2.57			
7	15-Feb-22	11,247,057		2.52			
8	22-Feb-22	11,683,128	45,190,115	2.50	2.55	1.95	2.03
9	01-Mar-22	11,147,057		2.44			
10	08-Mar-22	10,723,858		2.29			
11	15-Mar-22	11,492,906		2.30			
12	22-Mar-22	11,803,557		2.39			
13	29-Mar-22	11,843,379	57,010,756	2.36	2.36	1.92	1.92
3 mths Totals:					\$2.45 149,048,570 Kgs	\$1.94 146,474,310 Kgs	\$2.03 148,359,082 Kgs
14	05-Apr-22	11,483,104		2.38			
15	10-Apr-22	11,133,534		2.38			
16	20-Apr-22	10,758,738		2.39			
17	26-Apr-22	10,890,972		2.38			
			44,266,348		2.38	1.83	2.05
18	05-May-22	9,409,673		2.30			
19	10-May-22	9,537,586		2.23			
20	17-May-22	9,132,928		2.24			
21	24-May-22	10,373,511		2.22			
22	31-May-22	10,594,907	49,048,605	2.28	2.20	1.84	1.89
23	07-Jun-22	10,632,772		2.27			
24	14-Jun-22	10,105,643		2.22			
25	21-Jun-22	9,643,573		2.17			
26	28-Jun-22	9,765,460	40,147,447	2.24	2.23	1.74	1.79
6 mths Totals:					\$2.38 282,510,969 Kgs	\$1.87 292,688,228 Kgs	\$1.97 290,761,896 Kgs
27	05-Jul-22	9,751,228		2.25			
28	12-Jul-22	8,896,491		2.23			
29	19-Jul-22	9,258,643		2.21			
30	26-Jul-22	9,237,776	37,144,138	2.22	2.23	1.68	1.76
31	02-Aug-22	8,847,424		2.20			
32	08-Aug-22	9,252,926		2.23			
33	16-Aug-22	9,550,677		2.21			
34	23-Aug-22	8,735,668		2.21			
35	30-Aug-22	7,726,507	44,113,201	2.26	2.22	2.01	1.92
36	06-Sep-22	8,505,013		2.27			
37	13-Sep-22	8,552,282		2.23			
38	20-Sep-22	9,003,351		2.25			
39	27-Sep-22	8,501,257	34,561,903	2.33	2.27	2.08	1.94
9 mths Totals:					\$2.33 398,330,210.50	\$1.88 391,770,296 Kgs	\$1.94 406,720,334 Kgs
40	04-Oct-22	8,064,156		2.29			
41	11-Oct-22	8,874,645		2.33			
42	18-Oct-22	9,461,637		2.35			
43	25-Oct-22	9,243,544	35,643,982	2.41	2.35	2.26	1.90
44	31-Oct-22	9,871,819		2.45			
45	07-Nov-22	9,795,990		2.43			
46	14-Nov-22	9,622,916		2.34			
47	21-Nov-22	10,451,868	39,742,593	2.32	2.38	2.31	1.90
48							
			-			2.38	2.10
Sale Nos. 1 to 51						503,893,400 Kgs	516,802,891 Kgs
Year end Totals :						\$1.97	\$1.93

Summary : Sale Averages by Country

Summary : Sale Averages by Country					
Country :	Year : 2022		Country :	Year : 2021	
	Sale Nos: 1 to 43			Sale Nos: 1 to 43	
	(10 months)			(10 months)	
	Kilos ' 000	Av. Prc US\$		Kilos ' 000	Av. Prc US\$
Kenya	344,865	2.49	Kenya	333,596	2.00
Uganda	58,405	1.34	Uganda	58,149	1.15
Tanzania	4,779	1.24	Tanzania	4,022	1.01
Rwanda	20,548	2.81	Rwanda	20,449	2.66
Burundi	5,353	2.29	Burundi	5,567	1.99
Malawi	-	-	Malawi	-	-
Mozambique	-	-	Mozambique	-	-
D R Congo	-	-	D R Congo	-	-
Madagascar	-	-	Madagascar	99	1.01
Ethiopia	24	1.48	Ethiopia	156	1.35
Total :	433,974	2.33		422,038	1.90

Year 2021 : 12M	503,893	1.97
Year 2020 : 12M	516,803	1.93
Year 2019 : 12M	454,013	2.04
Year 2018 : 12M	458,361	2.43
Year 2017 : 12M	397,646	2.81
Year 2016 : 12M	407,989	2.29
Year 2015 : 12M	358,639	2.73

Compiled by : Tea Brokers East Africa Ltd