



TEA BROKERS EAST AFRICA LIMITED

Telephone: +254 41 2221953 / 4
 Fax: +254 41 231 4480
 Mobile: +254 735 221953 / 729 403507
 E-mail: mail@tbeal.co.ke
 www.tbeal.net

Tea Trade Centre
 Nyerere Avenue
 PO Box 87296 - 80100



Tea Market Report: Sale 46 of 14th—16th November, 2022

Fairly good general demand for the 211,155 packages (14.21m/kgs) in the market; 37.72% were neglected.

Leaf Grades (M2)

Offerings: 120,859 packages (7.97 m/kegs) –36.57% unsold.

BP1:

Best – Reduced competition at firm to USC48 below previous prices but a few select invoices appreciated by up to USC98.

Brighter – Were mostly easier by up to USC28; the lower end however advanced by up to USC15.

Mediums – KTDA mediums saw improved interest at firm to USC20 dearer with plantation mediums irregular varying between steady to USC41 dearer to easier by up to USC30.

Lower Mediums – Irregular ranging between firm to USC16 dearer to easier by up to USC18.

Plainer – Improved interest with most lines advancing by up to USC23 while others eased by up to USC10.

PF1:

Best – Irregularly easier by up to USC39.

Brighter – Firm to easier by up to USC12.

Mediums – KTDA mediums were steady to USC13 below last levels

Current and Future Fresh Auction Offerings

Country	Sale 46 14 - 16 Nov'22		Sale 46 16 - 17 Nov'21		Sale 47 21 - 23 Nov'22		Sale 48 28 - 30 Nov'22	
	MG	SG	MG	SG	MG	SG	MG	SG
Kenya	110,740	9,080	107,580	13,980	123,240	10,320	122,400	10,720
Uganda	17,278	7,980	17,660	9,479	17,680	8,579	16,560	9,320
Tanzania	1,560	1,120	720	1,180	1,160	80	600	20
Rwanda	7,160	1,080	5,600	940	7,620	1,260	6,600	1,180
Burundi	960	340	1,520	341	760	400	960	420
Zambia	0	0	0	0	0	0	0	0
Malawi	0	0	0	0	0	0	0	0
Madagascar	0	0	0	0	0	0	0	0
Zimbabwe	0	0	0	0	0	0	0	0
D R Congo	0	0	0	0	0	0	0	0
Mozambique	0	0	0	0	0	0	0	0
Ethiopia	0	0	0	0	0	0	0	0
Reprints	53,000	857	24,140	3,640	48,040	960	51,920	880
Total	137,698	19,600	133,080	25,920	150,460	20,639	147,120	21,660
		157,298		159,000		171,099		168,780

while plantation mediums shed up to USC28.

Lower Mediums – Were irregular varying between firm to USC8 dearer to easier by up to USC17.

Plainer – Ranged between steady to USC22 dearer to easier by up to USC13 with a few invoices losing USC28 and USC43.

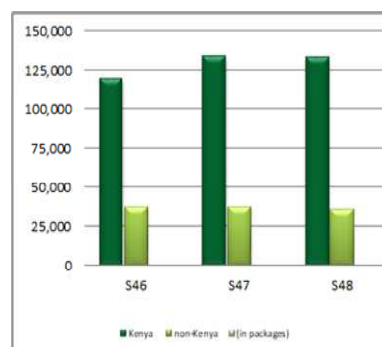
DUST Grades (M1)

Offerings: 69,839 packages (5.20m/kgs) –33.45% unsold.

PDUST:

Best – Lost up to USC41.

Brighter – Were firm to easier by up to USC12.



Mediums – KTDA mediums were mostly steady at price limits with select lines dearer by up to USC6 and some teas shed up to USC20 while plantation mediums were easier by up to USC8.

Cont...../ Page 2

continued

Lower Medium – Eased by up to USC24 .

Plainer – Firm to USC16 below last prices.

DUST1:

Best – Irregularly easier by up to USC80.

Brighter – Were discounted by up to USC65.

Mediums – KTDA mediums were firm to USC12 easier while plantation mediums shed up to USC28.

Lower Medium – Eased by up to USC30.

Plainer – Lost up to USC20 but a few lines advanced by up to USC5.

Secondary Grades (S1)

Offerings: 20,457 packages (1.05m/kgs) –15.01% unsold.

In the Secondary Catalogues, best **BPs** were barely steady while others were firm with **PFs** irregular. Clean well sorted coloury **Fannings** tended easier while **similar DUSTs** were steady. **Other Fannings** lost value with **DUSTs** firm. **BMFs** were well absorbed.

Markets

Kazakhstan, other **CIS states** and **Sudan** lent improved but selective support with **Pakistan Packers**, **Bazaar** and **Afghani-**

stan maintaining useful activity but at lower levels. **Egyptian Packers**, **UK**, **Yemen** and other **Middle Eastern countries** reduced interest while **Iran** showed more enquiry. **Russia** were less active while **Local Packers** were out-bid. **Somalia** maintained activity at the lower end of the market.

Mombasa Auction Hammer Market Analysis—Sale No 46/2022

	Category (Band)	Percentage volume sold	Average Price ranges (for the marks within the category)		Min-Max Prices per grade							
					BP1		PF1		PD		DUST1	
			Min	Max	Min	Max	Min	Max	Min	Max	Min	Max
1	Best	91%	2.89	3.83	2.82	4.92	2.91	3.16	2.78	3.3	2.77	3.14
2	Below Best	88%	2.71	2.99	2.6	4.29	2.6	2.96	2.62	2.9	2.64	3.15
3	Good	32%	2.16	2.74	2.22	3.02	2.18	2.8	2.16	2.7	2.19	2.66
4	Best Medium	87%	1.9	2.37	2.02	2.4	2	2.3	1.9	2.38	1.9	2.3
5	Medium	69%	1.59	2.15	1.52	2.24	1.5	2.22	1.5	2.19	1.56	2.22
6	Lower Medium	87%	1.45	1.81	1.2	1.55	1.4	1.81	1.45	1.82	1.48	1.94
7	Plain	92%	1.35	1.61	1.06	1.28	1.32	1.6	1.32	1.61	1.44	1.54
	Totals	60%	1.35	3.83	1.06	4.92	1.32	3.16	1.32	3.3	1.44	3.15
	Category (Band)	Percentage of Total Sold	Average Prices per grade								Totals	
			BP1		PF1		PD		DUST1			
			Kgs	Avg	Kgs	Avg	Kgs	Avg	Kgs	Avg	Kgs	Avg
1	Best	14%	107,336	3.3	583,016	2.97	257,876	2.88	101,116	2.87	1,049,344	2.97
2	Below Best	28%	210,889	2.83	1,109,536	2.9	595,325	2.78	233,056	2.8	2,148,806	2.85
3	Good	25%	269,481	2.58	1,036,940	2.48	403,285	2.47	209,792	2.46	1,919,498	2.49
4	Best Medium	10%	66,512	2.24	371,140	2.18	287,400	2.18	54,920	2.19	779,972	2.18
5	Medium	12%	71,451	1.89	355,923	1.96	433,218	1.94	86,893	1.98	947,484	1.95
6	Lower Medium	8%	70,273	1.38	210,982	1.63	250,792	1.6	103,420	1.6	635,467	1.58
7	Plain	4%	38,909	1.2	77,960	1.43	102,868	1.46	59,744	1.49	279,481	1.42
	Totals	100%	834,851	2.48	3,745,497	2.53	2,330,764	2.32	848,941	2.36	7,760,052	2.44

Average Auction Hammer Quantities and Prices by Country

Country of Origin	Main			Secondary			Total			Total for Corresponding Sale for Last Year		
	Pkgs	Kgs	USC	Pkgs	Kgs	USC	Pkgs	Kgs	USC	Pkgs	Kgs	USC
Kenya	92,720	6,507,946	255	8,180	423,639	150	100,900	6,931,585	248	118,980	8,092,027	248
Uganda	15,519	987,760	159	7,180	350,533	121	22,699	1,338,293	149	23,739	1,393,950	106
Tanzania	1,080	65,604	151	440	21,464	116	1,520	87,068	142	1,800	97,224	92
Rwanda	4,320	301,300	301	940	60,320	248	5,260	361,620	292	6,260	433,640	310
Burundi	600	38,908	241	340	14,712	150	940	53,620	216	1,381	84,178	224
Zambia	-	-	-	-	-	-	-	-	-	-	-	-
Malawi	-	-	-	-	-	-	-	-	-	-	-	-
Mozambique	-	-	-	-	-	-	-	-	-	-	-	-
Madagascar	-	-	-	-	-	-	-	-	-	-	-	-
Zimbabwe	-	-	-	-	-	-	-	-	-	-	-	-
D R Congo	-	-	-	-	-	-	-	-	-	-	-	-
Ethiopia	-	-	-	-	-	-	-	-	-	-	-	-
Total	114,239	7,901,518	244	17,080	870,668	144	131,319	8,772,186	234	152,160	10,101,019	229

Sale Number	Previous Sale's Quantities and Prices									Total for Corresponding Sale for Last Year		
	Main			Secondary			Total			Pkg	Kgs	USC
Sale 45/22	120,660	8,339,127	254	17,900	898,139	145	138,560	9,237,266	243			
Sale 44/22	122,760	8,490,714	256	16,980	850,125	143	139,740	9,340,838	246			
Sale 43/22	116,960	8,077,622	253	16,420	815,579	139	133,380	8,893,200	242			
Sale 42/22	114,260	7,889,054	247	15,120	751,803	139	129,380	8,640,857	237			
Sale 41/22	112,020	7,743,205	243	15,480	771,135	139	127,500	8,521,224	233			
Sale 40/22	98,380	6,743,042	241	13,080	655,453	138	111,460	7,398,495	232			

Average Auction Hammer Prices by Grade and Country

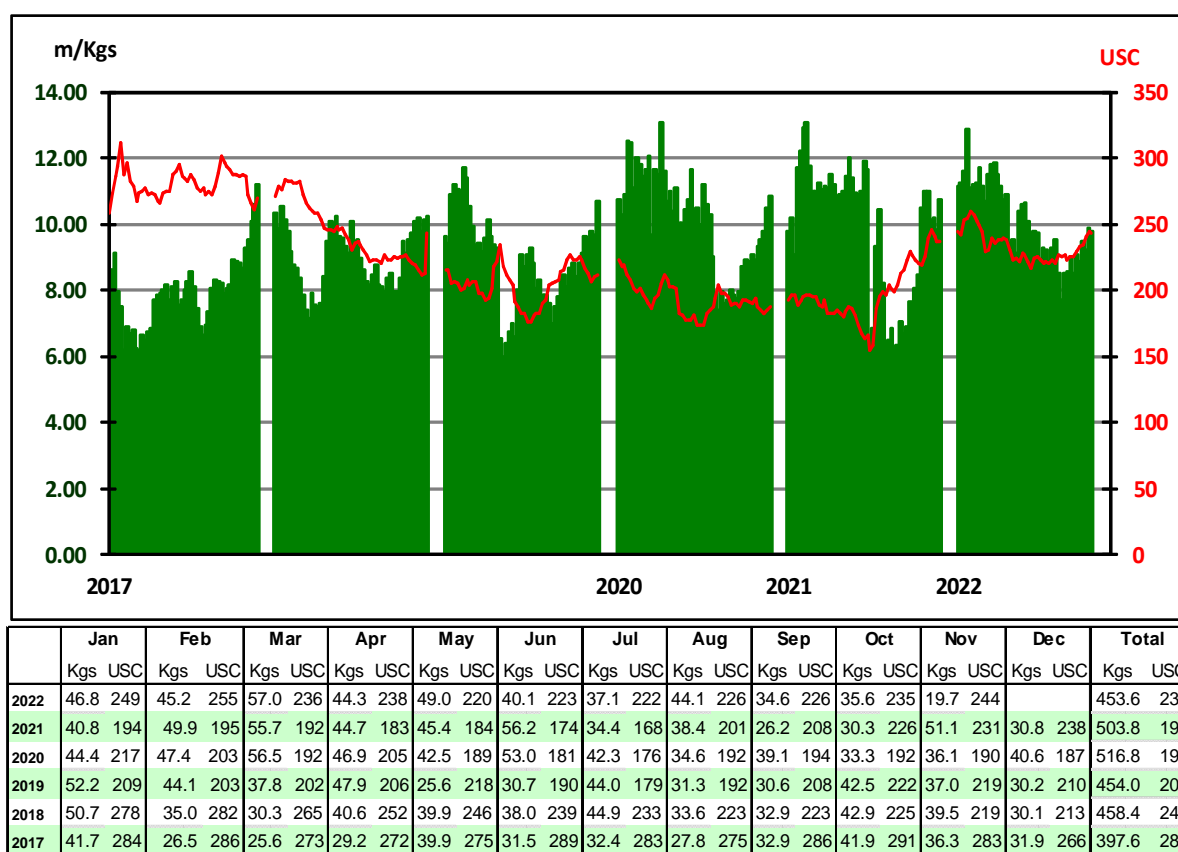
Country of Origin	Current Sale's Prices per Grade										Corresponding Prices per Grade for Last Year									
	BP1	PF1	PD	D1	BP/2	PF/2	D/2	F/1	BMF	Av	BP1	PF1	PD	D1	BP/2	PF/2	D/2	F/1	BMF	Av
Kenya	262	260	244	255	177	165	153	154	104	248	219	271	246	243	110	145	112	122	75	248
Uganda	143	161	161	162	131	143	137	116	97	149	101	130	116	100	93	103	78	87	71	106
Tanzania	122	168	151	150	120	114	131	120	96	142	90	124	95	80	80	102	93	87	75	92
Rwanda	358	294	292	277	281	248	211	176	-	292	407	302	306	293	227	260	170	177	75	310
Burundi	241	249	232	241	-	-	154	150	-	216	213	274	245	222	-	-	153	140	-	224
Zambia	-	-	-	-	-	-	-	-	-	-	-	-	-	-	-	-	-	-	-	-
Malawi	-	-	-	-	-	-	-	-	-	-	-	-	-	-	-	-	-	-	-	-
Mozambique	-	-	-	-	-	-	-	-	-	-	-	-	-	-	-	-	-	-	-	-
Madagascar	-	-	-	-	-	-	-	-	-	-	-	-	-	-	-	-	-	-	-	-
Zimbabwe	-	-	-	-	-	-	-	-	-	-	-	-	-	-	-	-	-	-	-	-
D R Congo	-	-	-	-	-	-	-	-	-	-	-	-	-	-	-	-	-	-	-	-
Ethiopia	-	-	-	-	-	-	-	-	-	-	-	-	-	-	-	-	-	-	-	-
	247	253	231	236	209	152	156	137	100	234	210	263	230	215	112	128	112	107	73	229

Sale Number	Previous Sale's Prices per Grade											Corresponding Prices per Grade for Previous Year										
	BP1	PF1	PD	D1	BP/2	PF/2	D/2	F/1	BMF	Av	BP1	PF1	PD	D1	BP/2	PF/2	D/2	F/1	BMF	Av		
Sale 45/22	257	259	244	259	204	158	164	142	100	243	206	248	229	227	135	134	107	113	71	222		
Sale 44/22	257	261	241	278	185	163	156	144	99	246	212	248	234	234	121	122	100	110	70	224		
Sale 43/22	251	258	240	273	166	156	157	139	101	242	194	259	235	237	120	134	112	120	70	226		
Sale 42/22	247	253	237	253	194	154	154	135	101	237	225	266	231	231	138	135	115	127	72	229		
Sale 41/22	250	250	229	244	183	155	152	134	105	233	228	271	231	218	139	133	117	126	73	231		
Sale 40/22	247	248	226	236	177	149	159	133	104	232	228	259	231	225	132	135	120	127	74	226		

Average Auction Prices and Quantities by Country

Country	Previous Sale Sale 45/22		Year To Date 2022		Last Year Sale 45/21		Year To Date 2021		Variance Year To Date	
	Kgs	USC	Kgs	USC	Kgs	USC	Kgs	USC	Kgs	USC
Kenya	7,904,737	255	360,769,730	250	8,322,802	239	348,579,581	202	12,190,149	48
Uganda	1,285,289	151	61,062,587	135	1,610,070	100	61,122,862	115	-60,275	20
Tanzania	78,608	139	4,962,410	125	67,932	91	4,160,456	101	801,954	24
Rwanda	434,636	312	21,307,354	282	417,028	313	21,174,616	267	132,738	15
Burundi	92,720	231	5,516,082	229	61,886	228	5,709,899	200	-193,817	29
Zambia	-	-	-	-	-	-	-	-	0	0
Malawi	-	-	-	-	-	-	-	-	0	0
Mozambique	-	-	-	-	-	-	-	-	0	0
Madagascar	-	-	-	-	-	-	98,943	101	-98,943	-101
Zimbabwe	-	-	-	-	-	-	-	-	0	0
D R Congo	-	-	-	-	-	-	-	-	0	0
Ethiopia	-	-	23,839	148	-	-	155,720	135	-131,881	13
Total	9,795,990	243	453,642,002	234	10,479,718	219	441,002,077	192	12,639,925	42

Mombasa Weekly Average Auction Quantities and Prices 2017—2022



Exchange Rates (2020-2022)



During the week the Kenya Shilling traded between KES 121.70 -122.20 and reached 121.70 at its lowest end week. Expectations are that the Kenya Shilling against US Dollar will trade at the level of 121.80 - 122.20 in the coming week.

(These figures are given as a guide and readers are advised not to use them as a basis for business transactions)

Auction Quantities

Country Offerings	This Week Sale 46/22		Year To Date 2022		Year To Date 2021		Variance Year To Date	
	Packages	Kgs	Packages	Kgs	Packages	Kgs	Packages	Kgs
Kenya	119,820	8,239,799	5,637,207	384,295,060	5,368,786	362,208,292	268,421	22,086,769
Uganda	25,258	1,495,229	1,091,378	62,954,906	1,093,334	63,288,625	-1,956	-333,719
Tanzania	2,680	140,772	99,260	5,347,746	87,299	4,742,216	11,961	605,530
Rwanda	8,240	564,488	314,080	21,662,089	312,859	21,444,356	1,221	217,733
Burundi	1,300	76,178	93,738	5,669,902	88,560	5,483,984	5,178	185,918
Zambia	0	0	0	0	960	56,740	-960	-56,740
Malawi	0	0	1,120	65,848	0	0	1,120	65,848
Mozambique	0	0	0	0	0	0	0	0
Madagascar	0	0	0	0	2,020	99,835	-2,020	-99,835
Zimbabwe	0	0	0	0	0	0	0	0
D R Congo	0	0	0	0	0	0	0	0
Ethiopia	0	0	400	22,879	2,300	130,640	-1,900	-107,761
Total	157,298	10,516,466	7,237,183	480,018,430	6,956,118	457,454,687	281,065	22,563,743

Sellers' Main Grade Quantities (in Packages)

Origin	BP 1			PF 1			PD			D 1			Total		
	S 46	S 47	S 48	S 46	S 47	S 48	S 46	S 47	S 48	S 46	S 47	S 48	S 46	S 47	S 48
KTDA	19117	21680	17720	64960	60200	65840	34160	33600	31240	6200	7640	8040	124437	123120	122840
Unilever Tea	360	600	280	120	120	120	120	120	120	80	220	1360	680	1060	1880
James Finlay	360	600	680	980	1560	1480	560	1480	1360	0	0	0	1900	3640	3520
Eastern Produce	1160	1200	920	2440	2680	3160	1200	1440	1840	840	960	640	5640	6280	6560
Others (K)	3460	4640	4400	13940	16240	17920	12880	13760	15020	2100	2800	2120	32380	37440	39460
Uganda	2680	2560	2660	5959	6720	6640	6519	6480	5480	2640	2560	2500	17798	18320	17280
Tanzania	590	510	590	1120	880	800	480	600	400	460	500	460	2650	2490	2250
Rwanda	2160	2960	2680	3060	3200	3200	1600	1720	1560	680	580	480	7500	8460	7920
Burundi	480	440	520	360	320	240	320	280	320	240	240	280	1400	1280	1360
DR Congo	0	0	0	0	0	0	0	0	0	0	0	0	0	0	0
Malawi	0	0	0	80	80	80	80	80	80	0	0	0	160	160	160
Zimbabwe	0	0	0	0	0	0	0	0	0	0	0	0	0	0	0
Madagascar	0	0	0	0	0	0	0	0	0	0	0	0	0	0	0
Mozambique	0	0	0	0	0	0	0	0	0	0	0	0	0	0	0
Zambia	0	0	0	0	0	0	0	0	0	0	0	0	0	0	0
Ethiopia	0	0	0	0	0	0	160	160	160	0	0	0	160	160	160
Total	30367	35190	30450	93019	92000	99480	58079	59720	57580	13240	15500	15880	194705	202410	203390

Buyer Purchases of Teas Offered by Grade (in Packages)

BUYER	%	Total	BP1	PF1	PD	D1	BP2	PF2	D2	FNGS	BMF
1 CHAI TRADING COMPANY LTD	6.89	14,540	1,280	10,180	1,960	740	20	100	200	60	
2 CARGILL KENYA LTD	6.37	13,440		13,240	200						
3 SSOE (KENYA) LIMITED	5.89	12,420	1,020	3,020	4,540	2,320	60	720	400	340	
4 GLOBAL TEA & COMMODITIES KENYA LTD.	5.26	11,100	2,120	4,840	2,160	1,120		20	560	280	
5 MOMBASA COFFEE LTD	5.25	11,080	160	1,080	6,760	2,760	320				
6 CUP OF JOE LTD	3.90	8,220	3,040	4,820			360				
7 JAMES FINLAY MOMBASA LIMITED	3.85	8,120	40	1,840	5,200	960		80			
8 LAB INTERNATIONAL KENYA LTD	3.54	7,460	40	2,760	3,280	1,360			20		
9 COFFTEA AGENCIES LTD	2.27	4,780	2,320	920	200			100		1,240	
10 DEVCHAND KESHAVJI (K) LTD	2.20	4,640		4,640							
11 M.J. CLARKE LTD	2.20	4,640		1,040	2,760	240	60			540	
12 VAN REES KENYA LIMITED	2.00	4,220	320	1,780	1,340	40	60	480	40	160	
13 ABBAS TRADERS LTD	1.36	2,860	160	720	1,120	120	120	320	200	20	80
14 GOLD CROWN FOODS (EPZ) LTD	1.16	2,440			80	200			300	780	1080
15 ALIBHAI RAMJI (MSA) LTD	1.04	2,200	40	1,280	80	280		160	80	280	
16 MIZAJ AFRICA LTD	0.83	1,759			1,599	160					
17 RANFER TEAS KENYA LTD	0.76	1,600	40	880	320	120		240			
18 IMPERIAL TEAS (EPZ) LTD	0.71	1,500	960	40		80	20	260	80	60	
19 AL EMIR LIMITED	0.59	1,240	160	760	160	80		20	40	20	
20 SWAFI FOODS LIMITED	0.53	1,120	560	400	40	40	40			40	
21 STANSAND (A) LTD	0.45	940						320		620	
22 SUMMER LINER CO. LTD	0.42	880	120				160		20	520	60
23 INDO-AFRICAN TEA CO. (K) LTD.	0.40	840	480	360							
24 AFRIBRIDGE TRADE EXPORTERS LTD	0.38	800		800							
25 SHAKAB EXPORT & IMPORT CO. LTD	0.38	800		560	40		80		120		
26 MAISHA COMMODITIES	0.36	760		120		40		100	180	300	20
27 TRANS-ATLANTIC TRADING Co. LTD	0.35	740	40	120		80	20	120	220	140	
28 GREEN LEAF TRADING CO. LTD	0.32	680								180	500
29 EMPIRE KENYA (EPZ) LTD	0.31	660	560						20	80	
30 LINDOP & COMPANY (KENYA) LTD	0.28	600		80	280	120			120		
31 MCLEOD RUSSEL AFRICA LIMITED	0.27	560	240	80	200				40		
32 SARDIA INTERNATIONAL CO. LTD	0.26	540	160					20	20	120	220
33 CROVE UNIQUE LIMITED	0.23	480			440	40					
34 AIMCO ENTERPRISES LTD	0.18	380								100	280
35 AFRO TEAS LTD	0.14	300						60		240	
36 PWANI HAULIERS	0.14	300								100	200
37 JALEEL TRADING COMPANY	0.10	220					20	20		20	160
38 AXIS TEA & SERVICES LIMITED	0.09	200							60		140
39 AL KHALIFA ENTERPRISES LTD	0.09	180									180
40 CAPITAL TEA TRADERS	0.09	180									180
41 GREAT WHITE PACKERS LTD	0.09	180		80	40	40	20				
42 DRINCO INTERNATIONAL LIMITED	0.08	160		160							
43 KIRINDO TRADERS LIMITED	0.08	160					40				120
44 LULA TRADING COMPANY	0.06	120									120
45 TEAVANA TEA STORE LTD	0.05	100									100
46 LUTEX LIMITED	0.03	60					60				
47 NALA TEA COMPANY LTD	0.02	40				40					
48 TANZIL TRADING LIMITED	0.02	40									40
49 TROPICAL CROPS & COMMODITIES	0.02	40									40
Total Sold	62.26	131,319	13,860	56,600	32,799	10,980	1,460	3,140	2,720	6,240	3,520
Withdrawn	0.02	40		40							
Unsold	37.72	79,576	15,517	34,979	24,480	1,680	220	720	280	1,140	560
% Unsold			53	38	43	13	13	19	9	15	14
Grand Total	100.00	210,935	29,377	91,619	57,279	12,660	1,680	3,860	3,000	7,380	4,080
Sale 45/22	67.37%	138,560	16,680	59,440	34,440	10,100	1,260	3,140	2,620	6,360	4,520
Sale 44/22	70.73%	139,740	15,720	61,960	35,040	10,040	900	3,340	2,480	5,660	4,600
Sale 43/22	68.59%	133,360	17,100	55,620	35,160	9,080	1,140	2,960	2,280	5,520	4,500

Other Tea Auction Centres

Colombo: at Sale 44 held on 8th and 9th November, 2022. The 0.68Mkg of Ex estate teas on offer met with lower demand. Select Best Western High Grown BOPs were barely steady, the below best and plainer varieties declined. Select Best Western High Grown BOPFs were easier, the below best and plainer varieties too declined from last week's levels following quality. Nuwara Eliya BOPs were irregularly easier, there were hardly any BOPFs on offer. Uda Pussellawa BOPs declined, the BOPFs too declined following quality. UVA BOPs were easier, the BOPFs eased from last week's levels. Low grown CTC BP1s were easier, the High and Medium sorts too were irregularly lower. Low Grown CTC PF1s were easier, the High Grown sorts were irregularly lower following quality. The 2.3Mkg of Low Grown teas which were on offer met with lower demand. In the Leafy segment, OPs declined marginally, OPA's were easier. Select best and best OP1s were lower, others were firm. In the Semi Leafy segment, BOP1s were lower to last. Pekoe varieties declined from last levels, Pekoe1s were irregularly lower. In the Small Leaf segment, FBOPs were lower to last. FBOPF varieties continued with lower demand. FBOPF1s were lower to last. BOPF.SP, BOPF, BOP.SP and BOPs too met with lower demand. All Premium Flowery teas met with fair demand. Turkey, Russia, Iran and the C.I.S countries lent fair support. Libya and Iraq were active.

Chittagong: at Sale 27 held on the 7th November, 2022, **CTC LEAF:** 57,337 packages of Current Season teas on offer met with a fairly good demand. **BROKENs:** A handful of well made clean Broken on offer met with a strong demand and were generally firm but their Mediums met with fair enquiry and tended easier whilst Plainer varieties witnessed less demand and were easier with quite a lot of withdrawals. BLF teas met with only a little enquiry and withdrawals were heavy in this category. **FANNINGS:** A small weight of good liquoring Fannings met with a strong demand and tended dearer. Other varieties mostly declined in value in line with quality. BLF teas continued to meet with less demand and were easier with heavy withdrawals. **CTC DUST:** 13,016 packages of Current Season teas on offer met with good demand. Good liquoring Dusts met with good competition and sold well at dearer rates. Their Mediums were fully firm on last. However, Plain and BLF teas were an easier market and saw heavy withdraw-

als. Blenders lent strong support with fair interest from the Loose tea buyers. **COMMENTS:** Buyers were more selective in their buying this week, generally ignoring Plain and BLF varieties. Well made clean liquoring sorts continued to receive good support and were firm to dearer over last. Blenders were the mainstay of the market with Loose tea buyers operating selectively. Dusts were a dearer market.

Cochin: at Sale 43 held on the 26th October, 2022. **CTC Leaf:** Good demand, all grades sold steady to dearer levels. **Buying pattern:** Up country buyers operated. **ORTHODOX Leaf:** Good demand. Primary whole leaf met to a steady market. Larger broken sold steady to dearer. Clean black smaller broken and fannings appreciated in value by 3-4c. **Buying pattern:** CIS operating with support from ME. **Dust:** Fair Demand. Prices realized for the popular and good liquoring sorts fully firm to occasionally dearer. Plainer sorts also appreciated in value especially on the bolder grades. **Buying pattern:** Major blenders and internal buyers active.

Calcutta: at Sale 45 held on the 9th and 11th November, 2022, **CTC:** There was good demand. Good liquoring Assam broken were irregularly easier although fannings were mostly steady. Liquoring & well-made medium Assams met with better demand and sold at fully firm to at times dearer rates. Better & medium Dooars were irregular closely following quality whilst the plainer category was firm. **Dust:** There was good demand with more interest on good liquoring PD grades which were fully firm to dearer. Similar quality smaller dust grades were barely steady to easier. Medium categories were steady to at times dearer. M/s Hindustan Unilever extended useful support on good liquoring Assam fannings and bolder broken

Auction Offerings

	Week 46	Week 47	Week 48	Week 49
Centre	16-Nov	23-Nov	30-Nov	7th Dec
Mombasa	211,155	220,099	221,580	
Limbe				
Colombo				
Jakarta				
Calcutta		243,483	232,221	232,411
Guwahati	205,521	198,041	195,293	
Chittagong				
Total	416,676	661,623	649,094	232,411

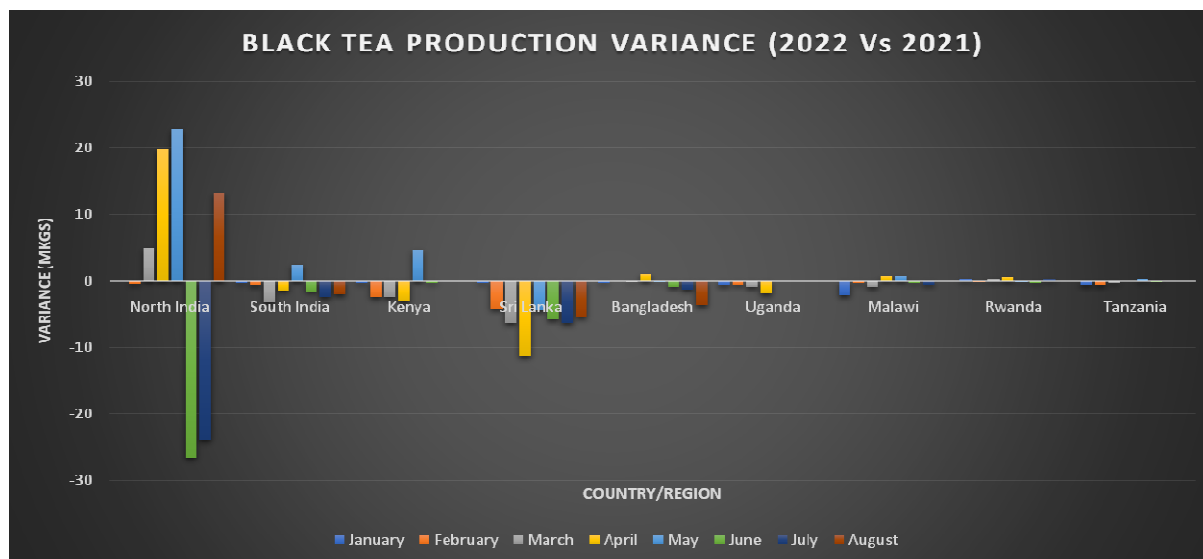
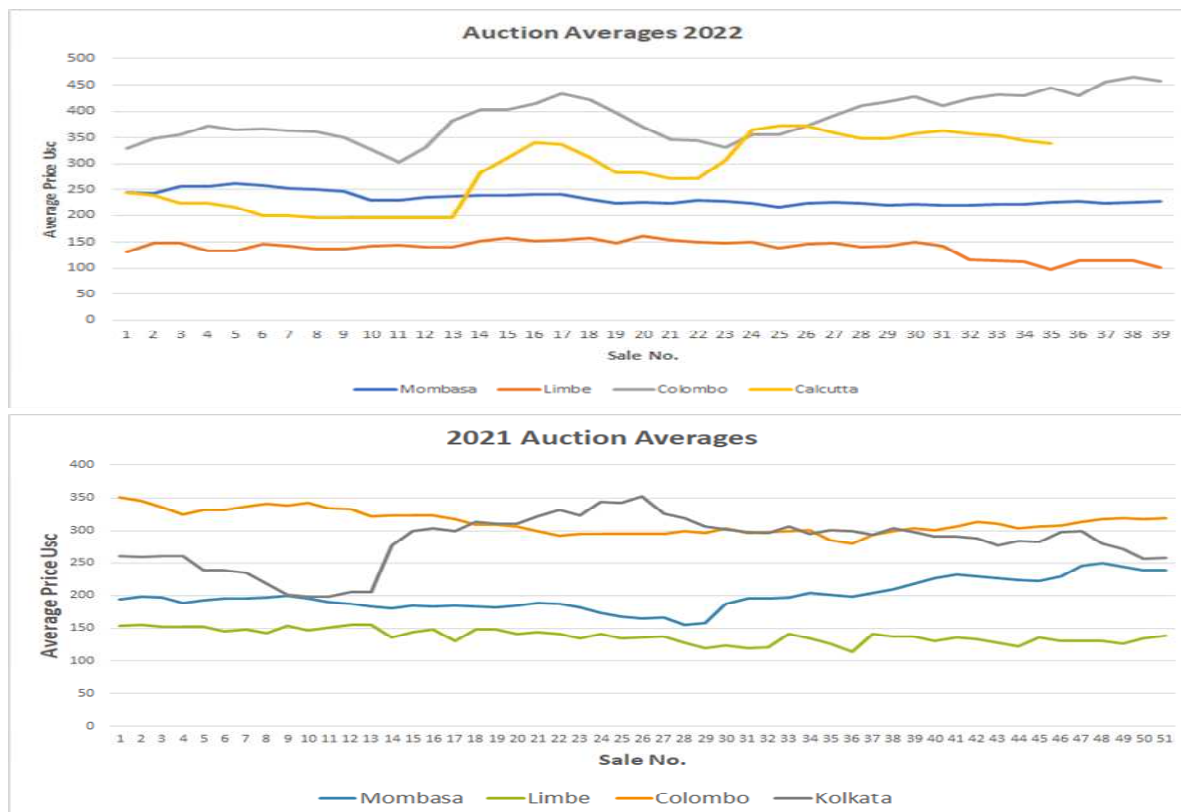
with lower inquiry on smaller broken. They were active in the dust market especially on brighter liquoring PD grades. M/s Tata Consumer Products was active on medium category Assams and plainer Dooars in the leaf market. They showed select interest on brighter liquoring dusts with more activity on medium categories. Western India buyers were active on better Assams along with useful activity from a regional packeteer on good liquoring Assams in the dust market. Export accounts showed limited interest on bolder broken. Local buyers were active on the Dooars & other clean, well-made descriptions

Guwahati: at Sale 45 held on the 9th November, 2022, there were 222,310 packages on offer.

Market: **CTC** There was fair demand. Select better liquoring sorts were barely steady. Remainder tended irregular and easier following quality with some withdrawals. **Buying Pattern:** HUL did not operate in this week's sale while TCPL operated very selectively on the plainer teas. Internal buyers were the mainstay of the market with some support from Western India Buyers. Exporters operated selectively on the larger broken.

Market: **DUST** There was good demand for the dust. Good and best Assams were barely steady. Remainder were irregular commensurate with quality. **Buying Pattern:** **DUST** There was no participation from HUL/TCPL. Internal and buyers from other destinations was the mainstay of the market with fair support from Western India buyers.

Auction Prices Trends



Regional Weather Conditions and World Crop

Kenya: Muranga: the week in review was sunny and rainy with 3.0mm of rain recorded in 1 wet day. The maximum and minimum temperatures were recorded at (26°C / 12°C) respectively. Crop intake averaged 95.2 tonnes/day on a 6 day plucking cycle.

Nyeri: The week was rainy with 40.8mm of rainfall recorded in 5 wet days. The highest and lowest temperatures were 23°C & 13°C respectively. Crop intake averaged 30.1 tonnes/day on a 6 day plucking cycle.

Meru: The week was warm and sunny in the morning followed by partly cloudy afternoons with rainy nights. A total of 121mm of rainfall was recorded on 5 wet days. On average the highest and lowest temperatures were 27°C & 16°C respectively. Crop intake averaged 46.7 tonnes/day on a six day plucking cycle.

Sotik: The area experienced cloudy and cool weather conditions accompanied by showers throughout the week. We received 76.1mm of rainfall in seven days. The highest and lowest temperatures were 26°C & 13°C respectively. Factory utilization improved from last week's levels.

Kericho: The week under review was partly sunny in the morning followed by cloudy afternoons with moderate overcast. A total of 67.9mm of rainfall was



The trouble with weather forecasting is that it is right too often for us to ignore it and wrong too often for us to rely on it.

recorded with few estates reporting hail storms. Average temperatures were highs of 23° Celsius and lows of 11° Celsius. Crop intake went down by 7% compared to previous week's levels. Crop on offer is however steady but may dwindle due to repeated hail damages.

Uganda: Some rains were received in the tea growing areas with Fort Portal receiving 64mm (33mm). Kibale received 20mm (25mm,) Hoima received 39mm (50mm) and Bushenyi received 45mm (39mm) of rainfall. The maximum temperatures maintained at an of average 29° C while the minimum temperatures averaged 15°C. Crop levels have slightly improved. **DETAILED REGIONAL FORECAST for November 15th to 21st 2022.** **The Highlands West of the Rift Valley,** the Lake Victoria Basin and the Central and South Rift Valley (Kisii, Nyamira, Trans-Nzoia, Uasin-Gishu, Elgeyo-Marakwet, Nandi, Kericho, Bomet,

Kakamega, Vihiga, Bungoma, West-Pokot, Siaya, Kisumu, Homabay, Busia, Migori, Baringo, Nakuru and Narok Counties): Morning rains are expected over few places. Afternoon showers and thunderstorms are likely to occur over several places. Night showers are expected over few places occasionally spreading to several places.

Highlands East of the Rift Valley (Nyandarua, Laikipia, Nyeri, Kirinyaga, Murang'a, Kiambu, Meru, Embu, Tharaka-Nithi and Nairobi Counties): Morning rains are expected over few places. Afternoon showers are likely to occur over several places. Night showers are expected over few places occasionally spreading to several places. Maximum (day-time) temperatures are likely to rise to about 29°C in Thika while in Nyahururu they may be as low as 21 °C.

Crop production Kenya: Crop volumes are low, but have slightly gone up in some areas due to the warmer temperatures. However, the crop is very low in places hit by hail a couple of weeks ago.

Uganda: Crop levels have slightly improved.

Malawi: Crop intake remain very low

	World Production from Main Producing Countries over the Past Twelve Months														Production over calendar years	
	Jan	Feb	Mar	Apr	May	Jun	Jul	Aug	Sep	Oct	Nov	Dec	Total	+ / -	2021	2020
	Variance															
Bangladesh	-	1.2	1.6	4.9	6.2	12.6	11.3	10.8	14.7	14.6	10.2	6.9	62.1	(3.2)	79.9	90.7
North India	-	1.8	51.8	71.2	100.2	117.0	133.3	166.4	166.8	167.3	103.0	49.7	808.5	35.2	773.3	1,033.4
South India	15.9	14.6	16.3	20.6	26.9	24.3	19.3	14.3	23.3	21.3	16.6	14.8	175.5	(8.4)	183.9	219.4
Sri Lanka	22.8	18.2	22.0	18.3	26.0	20.1	19.8	18.2	21.0	24.0	20.0	20.4	186.4	(45.8)	232.2	275.9
Kenya	48.7	40.8	46.3	41.2	50.0	43.3	33.9	33.6	43.4	49.0	50.7	54.4	304.2	(4.5)	342.3	570.6
Uganda	6.6	5.2	4.7	5.4	7.0	6.5	5.5	4.5	6.0	7.6	6.6	6.7	21.9	(4.0)	10.6	28.3
Tanzania	2.1	2.7	3.1	2.9	2.7	1.8	0.9	0.9	1.4	2.6	1.9	1.5	18.5	(1.7)	20.2	28.6
Rwanda	3.4	2.9	3.6	3.8	3.6	3.0	2.3	2.1	2.8	3.5	3.3	3.2	27.5	1.9	25.6	33.2
Malawi	4.8	7.0	7.1	7.1	4.5	1.9	1.3	2.0	3.6	2.9	1.4	5.3	39.3	(3.1)	42.4	45.2
Total	104.3	93.2	156.5	175.4	220.1	224.0	222.1	214.7	233.6	282.6	207.1	101.8	1,643.9	(33.6)	1,710.4	2,325.3
Variance	(2.5)	(5.4)	34.0	11.6	5.1	30.4	16.9	10.2	-21.4	0.0	0.0	0.0	100.3			

Monthly figures in "BLACK" are for 2022 whilst figures in "BLUE" are for 2021

Mombasa Auction—Weekly Sale Average Prices (All teas) 2022

Sale Nos.	Sale Date	Kilos sold Weekly	Kilos Sold monthly	Year : 2022 Av.Price US\$ weekly	Year : 2022 Av. Price US\$ monthly	Year : 2021 Av. Price US\$ monthly	Year : 2020 Av. Price US\$ monthly
1	04-Jan-22	11,166,757		2.44			
2	11-Jan-22	11,233,007		2.42			
3	18-Jan-22	11,588,410		2.53			
4	25-Jan-22	12,859,526	46,847,700	2.55	2.49	1.94	2.17
5	01-Feb-22	11,075,868		2.60			
6	08-Feb-22	11,184,062		2.57			
7	15-Feb-22	11,247,057		2.52			
8	22-Feb-22	11,683,128	45,190,115	2.50	2.55	1.95	2.03
9	01-Mar-22	11,147,057		2.44			
10	08-Mar-22	10,723,858		2.29			
11	15-Mar-22	11,492,906		2.30			
12	22-Mar-22	11,803,557		2.39			
13	29-Mar-22	11,843,379	57,010,756	2.36	2.36	1.92	1.92
3 mths Totals:					\$2.45 149,048,570 Kgs	\$1.94 146,474,310 Kgs	\$2.03 148,359,082 Kgs
14	05-Apr-22	11,483,104		2.38			
15	10-Apr-22	11,133,534		2.38			
16	20-Apr-22	10,758,738		2.39			
17	26-Apr-22	10,890,972	44,266,348	2.38	2.38	1.83	2.05
18	05-May-22	9,409,673		2.30			
19	10-May-22	9,537,586		2.23			
20	17-May-22	9,132,928		2.24			
21	24-May-22	10,373,511		2.22			
22	31-May-22	10,594,907	49,048,605	2.28	2.20	1.84	1.89
23	07-Jun-22	10,632,772		2.27			
24	14-Jun-22	10,105,643		2.22			
25	21-Jun-22	9,643,573		2.17			
26	28-Jun-22	9,765,460	40,147,447	2.24	2.23	1.74	1.79
6 mths Totals:					\$2.38 282,510,969 Kgs	\$1.87 292,688,228 Kgs	\$1.97 290,761,896 Kgs
27	05-Jul-22	9,751,228		2.25			
28	12-Jul-22	8,896,491		2.23			
29	19-Jul-22	9,258,643		2.21			
30	26-Jul-22	9,237,776	37,144,138	2.22	2.23	1.68	1.76
31	02-Aug-22	8,847,424		2.20			
32	08-Aug-22	9,252,926		2.23			
33	16-Aug-22	9,550,677		2.21			
34	23-Aug-22	8,735,668		2.21			
35	30-Aug-22	7,726,507	44,113,201	2.26	2.22	2.01	1.92
36	06-Sep-22	8,505,013		2.27			
37	13-Sep-22	8,552,282		2.23			
38	20-Sep-22	9,003,351		2.25			
39	27-Sep-22	8,501,257	34,561,903	2.33	2.27	2.08	1.94
9 mths Totals:					\$2.33 398,330,210.50	\$1.88 391,770,296 Kgs	\$1.94 406,720,334 Kgs
40	04-Oct-22	8,064,156		2.29			
41	11-Oct-22	8,874,645		2.33			
42	18-Oct-22	9,461,637		2.35			
43	25-Oct-22	9,243,544	35,643,982	2.41	2.35	2.26	1.90
44	31-Oct-22	9,871,819		2.45			
45	07-Nov-22	9,795,990		2.43			
46							
47			19,667,809		2.44	2.31	1.90
48							
Sale Nos. 1 to 51						2.38	2.10
Year end Totals :						503,893,400 Kgs \$1.97	516,802,891 Kgs \$1.93

Summary : Sale Averages by Country

Summary : Sale Averages by Country							
		Year : 2022				Year : 2021	
		Sale Nos: 1 to 43 (10 months)				Sale Nos: 1 to 43 (10 months)	
Country :	Kilos ' 000	Av. Prc	US\$	Country :	Kilos ' 000	Av. Prc	US\$
Kenya	344,865	2.49		Kenya	333,596	2.00	
Uganda	58,405	1.34		Uganda	58,149	1.15	
Tanzania	4,779	1.24		Tanzania	4,022	1.01	
Rwanda	20,548	2.81		Rwanda	20,449	2.66	
Burundi	5,353	2.29		Burundi	5,567	1.99	
Malawi	-	-		Malawi	-	-	
Mozambique	-	-		Mozambique	-	-	
D R Congo	-	-		D R Congo	-	-	
Madagascar	-	-		Madagascar	99	1.01	
Ethiopia	24	1.48		Ethiopia	156	1.35	
Total :	433,974	2.33			422,038	1.90	

Year 2021 : 12M	503,893	1.97
Year 2020 : 12M	516,803	1.93
Year 2019 : 12M	454,013	2.04
Year 2018 : 12M	458,361	2.43
Year 2017 : 12M	397,646	2.81
Year 2016 : 12M	407,989	2.29
Year 2015 : 12M	358,639	2.73

Compiled by : Tea Brokers East Africa Ltd