



TEA BROKERS EAST AFRICA LIMITED

Telephone: +254 41 2221953 / 4
 Fax: +254 41 231 4480
 Mobile: +254 735 221953 / 729 403507
 E-mail: mail@tbeal.co.ke
 www.tbeal.net

Tea Trade Centre
 Nyerere Avenue
 PO Box 87296 - 80100



Tea Market Report: Sale 44 of 31st Oct—2nd November, 2022

There was good demand but at irregular levels with prices following quality for the 197,500 packages (13.24m/kgs) available. 27.14% remained unsold.

Leaf Grades (M2)

Offerings: 113,940 packages (7,503,523.50 kilos) –30.15% unsold.

BP1:

Best – Met good but irregular competition and ranged between firm to USC46 dearer with selected invoices appreciating by up to USC62 to USC26 below previous levels.

Brighter – Were steady to USC20 dearer with a few selected teas gaining USC46.

Mediums – KTDA mediums varied between firm to dearer by USC6 to easier by up to USC15 with plantation mediums ranging between USC6 dearer to USC24 below last prices.

Lower Mediums – Irregular varying between steady to USC24 dearer to easier by up to USC15.

Plainer – Saw reduced competition and were irregularly easier by up to USC36 but a few lines advanced by up USC30.

PF1:

Best – Improved enquiry and appreciated by up to USC16.

Current and Future Fresh Auction Offerings

Country	Sale 44 31 Oct - 2 Nov'22		Sale 44 1 - 3 Nov'21		Sale 45 7 - 9 Nov'22		Sale 46 14 - 16 Nov'22	
	MG	SG	MG	SG	MG	SG	MG	SG
Kenya	113,600	7,860	94,240	9,480	120,960	9,000	110,740	9,080
Uganda	15,200	8,000	15,980	9,020	14,640	8,000	17,278	7,980
Tanzania	1,040	660	720	1,180	3,440	1,080	1,560	1,120
Rwanda	4,720	860	4,440	640	3,560	700	7,160	1,080
Burundi	960	240	840	240	1,040	560	960	340
Zambia	0	0	0	0	0	0	0	0
Malawi	0	0	0	0	0	0	0	0
Madagascar	0	0	0	0	0	0	0	0
Zimbabwe	0	0	0	0	0	0	0	0
D R Congo	0	0	0	0	0	0	0	0
Mozambique	0	0	0	0	0	0	0	0
Ethiopia	0	0	0	0	0	0	0	0
Reprints	42,880	1,480	12,020	3,096	41,160	1,500	53,000	857
Total	135,520	17,620	116,220	20,560	143,640	19,340	137,698	19,600
	153,140		136,780		162,980		157,298	

Brighter – Were firm to USC12 dearer.

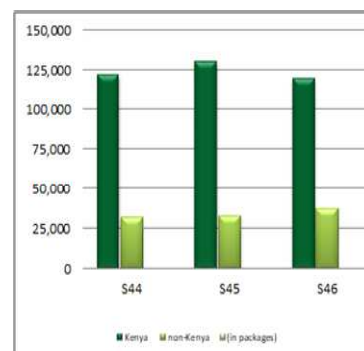
Mediums – KTDA mediums were mostly steady to USC10 above previous rates but some lines lost up to USC4; plantation mediums varied between firm to USC6 dearer to easier by up to USC4.

Lower Mediums – Saw irregular interest at mostly steady to USC24 dearer to easier by up to USC14.

Plainer – Varied between USC11 dearer to USC9 below last prices.

DUST Grades (M1)

Offerings: 64,460 packages (4.78m/kgs) –26.85% unsold.



PDUST:

Best – Advanced by up to USC23.

Brighter – Were steady to USC14 dearer.

Cont...../ Page 2

continued

Mediums – KTDA mediums were steady at last levels with plantation mediums firm to dearer by up to USC14.

Lower Medium – Were steady to USC18 above previous prices .

Plainer – Varied between firm to mostly dearer by up to USC12 and select invoices advanced by USC24 to easier by up to USC8.

DUST1:

Best – Saw irregular interest with some teas appreciating by up to USC8 while others shed up to USC12.

Brighter –Steady to dearer by up to USC22 but a few lines lost up to USC5

Mediums – KTDA mediums saw

improved interest at firm to USC15 dearer with selected invoices advancing by USC24 and USC32. Plantation mediums were irregular ranging between steady to USC8 dearer to mostly easier by up to USC11.

Lower Medium – Irregularly firm to dearer by up to USC17.

Plainer – Were steady to USC18 above last rates.

Secondary Grades (S1)

Offerings: 19,100 packages (955,276.00 kilos) –10.05% unsold

In the Secondary Catalogues, best **BPs** tended easier while others gained with **PFs** firm to dearer. Clean well sorted coloury **Fan-**

nings appreciated with **similar DUSTs** steady. **Other Fannings** were dearer while **DUSTs** held value. **BMFs** were well absorbed.

Markets

Pakistan Packers, Bazaar and Afghanistan showed strong support with more interest from **Egyptian Packers, Yemen, other Middle Eastern countries, Kazakhstan and other CIS states. Sudan and UK** lent useful but selective interest while **Iran** were more active. **Russia** maintained enquiry with **Local Packers** active on account of price. **Somalia** maintained activity at the lower end of the market.

Mombasa Auction Hammer Market Analysis—Sale No 44/2022

Category (Band)	Percentage volume sold	Average Price ranges (for the marks within the category)		Min-Max Prices per grade							
				BP1		PF1		PD		DUST1	
		Min	Max	Min	Max	Min	Max	Min	Max	Min	Max
1 Best	96%	3.1	3.81	2.9	4.54	3.1	3.36	2.84	3.32	3.7	3.94
2 Below Best	94%	2.82	3.2	2.55	3.62	2.75	3.2	2.7	3.06	2.85	3.91
3 Good	47%	2.17	2.93	2.3	2.76	2.3	3	2.16	2.75	2.26	3
4 Best Medium	88%	2.08	2.57	2.02	2.6	2.02	2.32	2.04	2.26	2.05	2.26
5 Medium	75%	1.6	2.21	1.4	2.35	1.57	2.3	1.5	2.22	1.6	2.18
6 Lower Medium	89%	1.32	1.87	1.22	1.58	1.38	1.94	1.32	2	1.5	1.88
7 Plain	92%	1.35	1.58	1.12	1.41	1.31	1.58	1.44	1.6	1.46	1.58
Totals	69%	1.32	3.81	1.12	4.54	1.31	3.36	1.32	3.32	1.46	3.94
Category (Band)	Percentage of Total Sold	Average Prices per grade								Totals	
		BP1		PF1		PD		DUST1			
		Kgs	Avg	Kgs	Avg	Kgs	Avg	Kgs	Avg	Kgs	Avg
1 Best	12%	127,503	3.22	509,086	3.17	245,984	2.94	113,747	3.85	996,320	3.2
2 Below Best	26%	312,920	2.86	1,079,763	3.11	599,440	2.88	185,847	3.73	2,177,970	3.06
3 Good	33%	300,969	2.53	1,578,846	2.5	679,819	2.52	230,302	2.56	2,789,936	2.51
4 Best Medium	10%	63,868	2.39	324,220	2.24	372,148	2.18	51,720	2.2	811,956	2.22
5 Medium	9%	63,553	1.79	360,212	2.03	322,459	1.98	47,776	2.02	794,000	1.99
6 Lower Medium	7%	50,108	1.41	214,858	1.63	236,313	1.65	111,930	1.67	613,209	1.63
7 Plain	3%	32,915	1.19	69,280	1.44	81,160	1.5	39,960	1.52	223,315	1.44
Totals	100%	951,836	2.57	4,136,265	2.62	2,537,323	2.41	781,282	2.79	8,406,706	2.57

Average Auction Hammer Quantities and Prices by Country

Country of Origin	Main			Secondary			Total			Total for Corresponding Sale for Last Year		
	Pkgs	Kgs	USC	Pkgs	Kgs	USC	Pkgs	Kgs	USC	Pkgs	Kgs	USC
Kenya	103,460	7,246,042	267	7,800	388,981	151	111,260	7,635,022	261	90,080	6,156,943	246
Uganda	13,620	865,169	162	7,620	375,924	125	21,240	1,241,093	151	20,580	1,214,816	100
Tanzania	1,120	69,130	159	680	31,984	120	1,800	101,114	146	1,240	64,472	96
Rwanda	3,720	256,709	307	640	42,784	238	4,360	299,493	297	3,480	243,816	324
Burundi	840	53,664	251	240	10,452	158	1,080	64,116	236	1,220	75,412	208
Zambia	-	-	-	-	-	-	-	-	-	-	-	-
Malawi	-	-	-	-	-	-	-	-	-	-	-	-
Mozambique	-	-	-	-	-	-	-	-	-	-	-	-
Madagascar	-	-	-	-	-	-	-	-	-	-	-	-
Zimbabwe	-	-	-	-	-	-	-	-	-	-	-	-
D R Congo	-	-	-	-	-	-	-	-	-	-	-	-
Ethiopia	-	-	-	-	-	-	-	-	-	-	-	-
Total	122,760	8,490,714	256	16,980	850,125	143	139,740	9,340,838	246	116,600	7,755,459	224

Sale Number	Previous Sale's Quantities and Prices									Tot+Q20:Q23al for Corresponding Sale for Last Year		
	Main			Secondary			Total			Pkg	Kgs	USC
Sale 43/22	116,960	8,077,622	253	16,420	815,579	139	133,380	8,893,200	242			
Sale 42/22	114,260	7,889,054	247	15,120	751,803	139	129,380	8,640,857	237	108,935	7,147,669	229
Sale 41/22	112,020	7,743,205	243	15,480	771,135	139	127,500	8,521,224	233	107,205	7,083,753	231
Sale 40/22	98,380	6,743,042	241	13,080	655,453	138	111,460	7,398,495	232	95,501	6,267,644	226
Sale 39/22	103,180	7,094,711	238	17,300	857,289	138	120,480	7,952,000	227	95,320	6,268,468	218
Sale 38/22	109,680	7,487,363	236	17,748	872,550	134	127,428	8,359,913	225	94,532	6,159,143	210

Average Auction Hammer Prices by Grade and Country

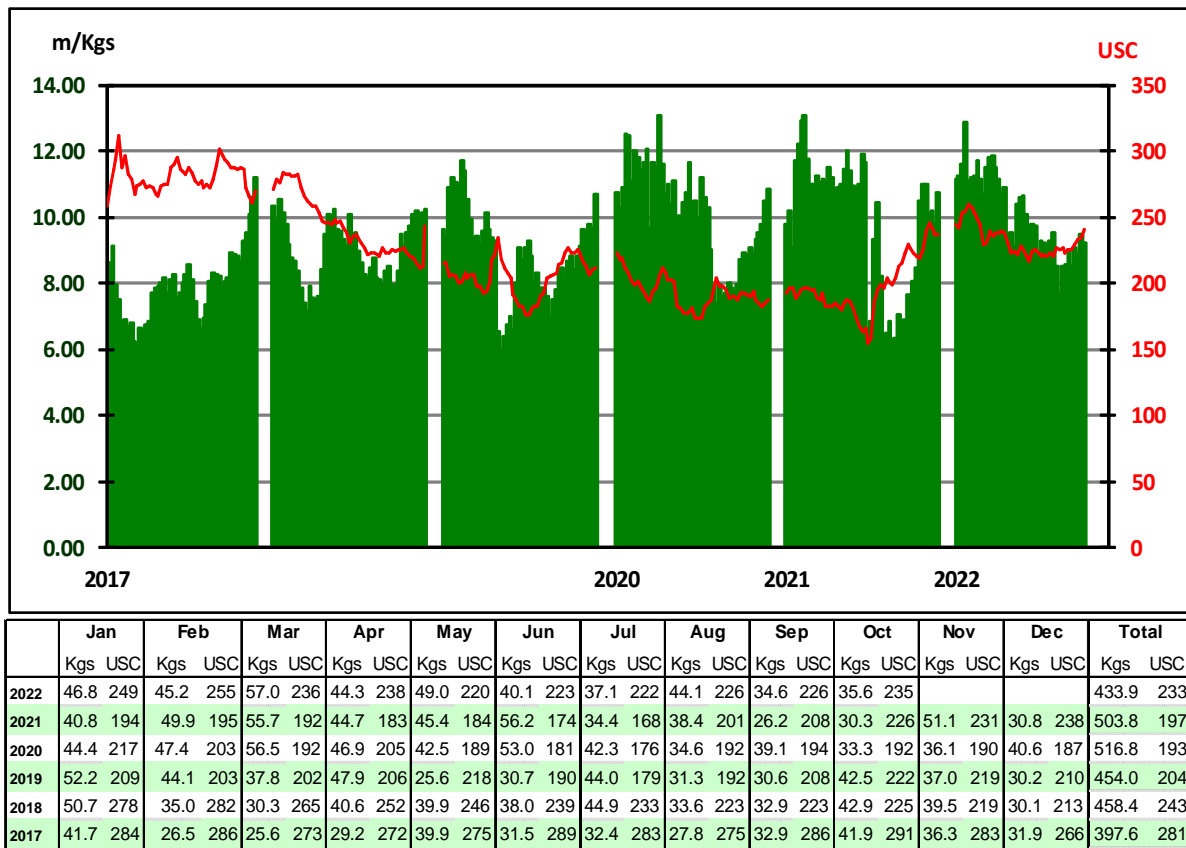
Country of Origin	Current Sale's Prices per Grade											Corresponding Prices per Grade for Last Year										
	BP1	PF1	PD	D1	BP/2	PF/2	D/2	F/1	BMF	Av	BP1	PF1	PD	D1	BP/2	PF/2	D/2	F/1	BMF	Av		
Kenya	265	269	253	309	171	172	152	166	101	261	224	261	251	265	120	146	96	133	72	246		
Uganda	137	165	164	166	124	151	142	122	98	151	99	119	103	95	91	100	92	85	68	100		
Tanzania	-	159	154	163	121	154	127	114	100	146	94	120	105	100	82	115	81	86	76	96		
Rwanda	330	308	289	290	286	235	221	184	-	297	454	299	319	287	224	209	163	140	-	324		
Burundi	243	270	244	244	-	-	176	156	-	236	188	262	218	218	-	-	167	145	-	208		
Zambia	-	-	-	-	-	-	-	-	-	-	-	-	-	-	-	-	-	-	-	-		
Malawi	-	-	-	-	-	-	-	-	-	-	-	-	-	-	-	-	-	-	-	-		
Mozambique	-	-	-	-	-	-	-	-	-	-	-	-	-	-	-	-	-	-	-	-		
Madagascar	-	-	-	-	-	-	-	-	-	-	-	-	-	-	-	-	-	-	-	-		
Zimbabwe	-	-	-	-	-	-	-	-	-	-	-	-	-	-	-	-	-	-	-	-		
D R Congo	-	-	-	-	-	-	-	-	-	-	-	-	-	-	-	-	-	-	-	-		
Ethiopia	-	-	-	-	-	-	-	-	-	-	-	-	-	-	-	-	-	-	-	-		
	257	261	241	278	185	163	156	144	99	246	212	248	234	234	121	122	100	110	70	224		

Sale Number	Previous Sale's Prices per Grade											Corresponding Prices per Grade for Previous Year										
	BP1	PF1	PD	D1	BP/2	PF/2	D/2	F/1	BMF	Av	BP1	PF1	PD	D1	BP/2	PF/2	D/2	F/1	BMF	Av		
Sale 41/22	251	258	240	273	166	156	157	139	101	242	194	259	235	237	120	134	112	120	70	226		
Sale 40/22	247	253	237	253	194	154	154	135	101	237	225	266	231	231	138	135	115	127	72	229		
Sale 41/22	250	250	229	244	183	155	152	134	105	233	228	271	231	218	139	133	117	126	73	231		
Sale 40/22	247	248	226	236	177	149	159	133	104	232	228	259	231	225	132	135	120	127	74	226		
Sale 39/22	247	247	225	222	170	154	154	136	101	227	235	247	215	222	137	127	108	125	74	218		
Sale 38/22	248	243	221	227	181	157	150	130	98	225	216	242	213	214	138	130	104	123	74	210		

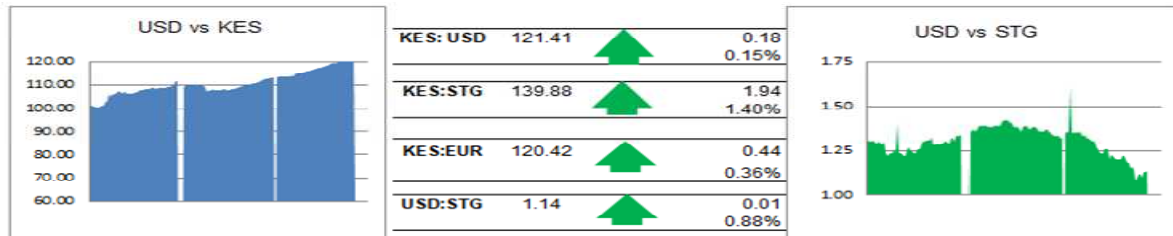
Average Auction Prices and Quantities by Country

Country	Previous Sale Sale 43/22		Year To Date 2022		Last Year Sale 43/21		Year To Date 2021		Variance Year To Date	
	Kgs	USC	Kgs	USC	Kgs	USC	Kgs	USC	Kgs	USC
Kenya	7,585,531	254	344,865,081	249	6,386,024	242	333,596,044	200	11,269,037	49
Uganda	1,144,029	149	58,405,048	134	1,154,902	106	58,149,220	115	255,828	19
Tanzania	114,988	136	4,779,052	124	79,568	102	4,021,872	101	757,180	23
Rwanda	328,692	300	20,547,885	281	288,348	320	20,449,020	266	98,865	15
Burundi	70,304	248	5,353,288	229	140,863	212	5,566,553	199	-213,265	30
Zambia	-	-	-	-	-	-	-	-	0	0
Malawi	-	-	-	-	-	-	-	-	0	0
Mozambique	-	-	-	-	-	-	-	-	0	0
Madagascar	-	-	-	-	-	-	98,943	101	-98,943	-101
Zimbabwe	-	-	-	-	-	-	-	-	0	0
D R Congo	-	-	-	-	-	-	-	-	0	0
Ethiopia	-	-	23,839	148	-	-	155,720	135	-131,881	13
Total	9,243,544	241	433,974,193	233	8,049,705	223	422,037,372	190	11,936,821	43

Mombasa Weekly Average Auction Quantities and Prices 2017—2022



Exchange Rates (2020-2022)



During the week the Kenya Shilling traded between KES 121.30 -121.70 and reached 121.30 at its lowest end week. Expectations are that the Kenya Shilling against US Dollar will trade at the level of 121.30 - 121.50 in the coming week.

(These figures are given as a guide and readers are advised not to use them as a basis for business transactions)

Auction Quantities

Country Offerings	This Week Sale 44/22		Year To Date 2022		Year To Date 2021		Variance Year To Date	
	Packages	Kgs	Packages	Kgs	Packages	Kgs	Packages	Kgs
Kenya	121,460	8,341,290	5,387,427	367,111,155	5,129,236	345,991,789	258,191	21,119,366
Uganda	23,200	1,334,307	1,043,480	60,144,004	1,039,595	60,151,764	3,885	-7,760
Tanzania	1,700	94,912	92,060	4,919,162	83,939	4,568,752	8,121	350,410
Rwanda	5,580	379,678	301,580	20,805,623	300,059	20,559,498	1,521	246,125
Burundi	1,200	72,116	90,838	5,503,436	85,340	5,296,476	5,498	206,960
Zambia	0	0	0	0	960	56,740	-960	-56,740
Malawi	0	0	1,120	65,848	0	0	1,120	65,848
Mozambique	0	0	0	0	0	0	0	0
Madagascar	0	0	0	0	2,020	99,835	-2,020	-99,835
Zimbabwe	0	0	0	0	0	0	0	0
D R Congo	0	0	0	0	0	0	0	0
Ethiopia	0	0	400	22,879	2,300	130,640	-1,900	-107,761
Total	153,140	10,222,303	6,916,905	458,572,107	6,643,449	436,855,494	273,456	21,716,613

Sellers' Main Grade Quantities (in Packages)

Origin	BP 1			PF 1			PD			D 1			Total		
	S 44	S 45	S 46	S 44	S 45	S 46	S 44	S 45	S 46	S 44	S 45	S 46	S 44	S 45	S 46
KTDA	20560	19360	19117	60200	64920	64960	33320	31440	34160	6440	8800	6200	120520	124520	124437
Unilever Tea	240	360	360	160	160	120	160	120	120	80	80	80	640	720	680
James Finlay	360	520	360	560	800	980	640	760	560	0	0	0	1560	2080	1900
Eastern Produce	880	800	1160	3720	3520	2440	840	840	1200	600	480	840	6040	5640	5640
Others (K)	3680	3260	3460	12140	13460	13940	11600	11800	12880	1880	2080	2100	29300	30600	32380
Uganda	2120	2240	2680	5580	5400	5959	5640	5560	6519	2400	1840	2640	15740	15040	17798
Tanzania	310	310	590	1240	680	1120	440	360	480	260	260	460	2250	1610	2650
Rwanda	1680	2060	2160	1840	2640	3060	1040	1320	1600	440	560	680	5000	6580	7500
Burundi	480	480	480	320	400	360	280	440	320	200	200	240	1280	1520	1400
DR Congo	0	0	0	0	0	0	0	0	0	0	0	0	0	0	0
Malawi	0	0	0	80	80	80	80	80	80	0	0	0	160	160	160
Zimbabwe	0	0	0	0	0	0	0	0	0	0	0	0	0	0	0
Madagascar	0	0	0	0	0	0	0	0	0	0	0	0	0	0	0
Mozambique	0	0	0	0	0	0	0	0	0	0	0	0	0	0	0
Zambia	0	0	0	0	0	0	0	0	0	0	0	0	0	0	0
Ethiopia	0	0	0	0	0	0	160	160	160	0	0	0	160	160	160
Total	30310	29390	30367	85840	92060	93019	54200	52880	58079	12300	14300	13240	182650	188630	194705

Buyer Purchases of Teas Offered by Grade (in Packages)

BUYER	%	Total	BP1	PF1	PD	D1	BP2	PF2	D2	FNGS	BMF
1 GLOBAL TEA & COMMODITIES KENYA LTD.	11.96	23,620	3,320	12,640	6,760	320			580		
2 JAMES FINLAY MOMBASA LIMITED	7.73	15,260	1,320	4,880	5,900	880		580	140	740	820
3 CARGILL KENYA LTD	6.30	12,440	80	11,360		1,000					
4 MOMBASA COFFEE LTD	5.22	10,300	80	1,320	5,560	3,120	220				
5 CHAI TRADING COMPANY LTD	4.88	9,640	1,400	5,640	1,800	320		140	240	100	
6 LAB INTERNATIONAL KENYA LTD	4.22	8,340		1,680	3,940	2,720					
7 DEVCHAND KESHAVJI (K) LTD	3.79	7,480		7,480							
8 SSOE (KENYA) LIMITED	2.69	5,320	1,240	1,560	720	600	100	620	280	200	
9 COFFTEA AGENCIES LTD	2.59	5,120	2,880	1,000	360			40		840	
10 CUP OF JOE LTD	2.59	5,120	360	1,920	2,840						
11 VAN REES KENYA LIMITED	2.32	4,580	40	3,160	860	80		320		120	
12 M.J. CLARKE LTD	2.19	4,320		160	1,880	240		100	60	1,720	160
13 ABBAS TRADERS LTD	1.88	3,720	280	1,120	1,360	40	20	320	260	160	160
14 MIZAJ AFRICA LTD	1.52	3,000		680	2,120	200					
15 SHAKAB EXPORT & IMPORT CO. LTD	1.23	2,420	1,240	920	40	80		60	80		
16 GOLD CROWN FOODS (EPZ) LTD	1.14	2,260					40	160	240	660	1,160
17 AFRIBRIDGE TRADE EXPORTERS LTD	1.04	2,060	800	1,200					60		
18 SWAFI FOODS LIMITED	1.01	2,000	1,000	320	20	40	300	160	100	60	
19 AL EMIR LIMITED	0.87	1,720	80	1,600				40			
20 IMPERIAL TEAS (EPZ) LTD	0.79	1,560	600	240	200	120		360		40	
21 SUMMER LINER CO. LTD	0.76	1,500	320	40	40		40			400	660
22 ALIBHAI RAMJI (MSA) LTD	0.59	1,160	80	800	120			120		40	
23 RANFER TEAS KENYA LTD	0.47	920	200	560	80	80					
24 STANSAND (A) LTD	0.45	880	80	480				180		140	
25 LINDOP & COMPANY (KENYA) LTD	0.30	600		400	200						
26 TRANS-ATLANTIC TRADING Co. LTD	0.26	520		80		40	40	80	240	40	
27 INDO-AFRICAN TEA CO. (K) LTD.	0.22	440	40	400							
28 GREEN LEAF TRADING CO. LTD	0.21	420								100	320
29 MAISHA COMMODITIES	0.16	320		40					140	140	
30 PWANI HAULIERS	0.15	300									300
31 AIMCO ENTERPRISES LTD	0.14	280								80	200
32 CROVE UNIQUE LIMITED	0.12	240			200	40					
33 KIRINDO TRADERS LIMITED	0.11	220					20			20	180
34 GREAT WHITE PACKERS LTD	0.09	180		120	40			20			
35 LULA TRADING COMPANY	0.09	180					20				160
36 MCLEOD RUSSEL AFRICA LIMITED	0.09	180	80				40	40		20	
37 TROPICAL CROPS & COMMODITIES	0.09	180	40				20			20	100
38 NALA TEA COMPANY LTD	0.08	160				120			40		
39 CAPITAL TEA TRADERS	0.07	140									140
40 AFRO TEAS LTD	0.06	120	40	40							40
41 DRINCO INTERNATIONAL LIMITED	0.06	120		120							
42 AXIS TEA & SERVICES LIMITED	0.05	100							20		80
43 AL KHALIFA ENTERPRISES LTD	0.04	80									80
44 EMPIRE KENYA (EPZ) LTD	0.04	80	80								
45 RIOTANA TRADING LIMITED	0.04	80	40				20			20	
46 TANZIL TRADING LIMITED	0.02	40									40
47 SUWAD ENTERPRISE LIMITED	0.01	20					20				
Total Sold	70.73	139,740	15,720	61,960	35,040	10,040	900	3,340	2,480	5,660	4,600
Withdrawn	0.01	20							20		
Unsold	29.21	57,660	13,800	22,440	18,160	1,320	320	300	280	940	100
% Unsold			47	27	34	12	26	8	10	14	2
Grand Total	100.00	197,420	29,520	84,400	53,200	11,360	1,220	3,640	2,780	6,600	4,700
Sale 43/22	68.59%	133,360	17,100	55,620	35,160	9,080	1,140	2,960	2,280	5,520	4,500
Sale 42/22	70.30%	129,380	17,800	53,000	35,900	7,560	920	2,660	2,480	4,580	4,480
Sale 41/22	70.33%	127,500	15,520	54,100	34,500	7,900	1,000	2,980	2,240	5,160	4,100

Other Tea Auction Centres

Colombo: at Sale 42 held on 25th and 26th October, 2022. The 0.8Mkg of Ex Estate teas on offer met with fair demand at slightly easier levels. Select Best Western High Grown BOPs were firm, the below best and plainer varieties were tending easier, whilst the plainer types were barely steady. Select Best Western High Grown BOPs too were firm to marginally easier at times, the below best and plainer varieties were tending lower. Nuwara Eliya BOPs were irregularly lower, there were hardly any BOPs on offer this week. Uda Pussellawa BOPs were easier, the BOPs declined following quality. UVA BOPs declined substantially, the BOPs followed a similar trend. Low grown CTC BP1s were firm, the High and Medium sorts were irregularly lower. Low Grown CTC PF1s were firm on last levels, the High Grown sorts were barely steady whilst the Medium Grown types mostly declined. The 2.3Mkg of Low Grown teas which were on offer met with lower demand. In the Leafy segment, OP/OPA were firm. Select best and best OP1s were lower, others too met with lower demand. In the Semi Leafy segment, BOP1s were lower to last. Pekoe varieties were firm, Pekoe1s were irregularly lower. In the Small Leaf segment, FBOPs were lower to last. FBOPF varieties continued with lower demand. FBOPF1s too were lower to last. BOPF.SP, BOPF, BOP.SP and BOPs too met with lower demand. All Premium Flowery teas were lower. Turkey, Russia, Iran and the C.I.S countries lent fair support. Libya and Iraq were active.

Chittagong: at Sale 25 held on the 24th October, 2022, **CTC LEAF:** 54,742 packages of Current Season teas on offer met with a fairly good demand. **BROKENs:** A handful of well made Invoices met with quite a good demand and were about firm. Medium and other types witnessed less demand and prices were easier following quality with fair withdrawals. Plain types saw a further erosion in demand and generally declined by upto Tk.5/- to Tk.7/- with more withdrawals. BLF teas met with fair interest and were about steady to slightly easier but there were heavier withdrawals. **FANNINGS:** A handful of good liquoring Fannings were well sought after by the buyers and were about steady to slightly easier often declining by Tk.3/- to Tk.5/-. Other types saw a little less demand and were easier by Tk.4/- to Tk.6/- with fair withdrawals. Plain varieties witnessed less demand and declined in price following quality with heavier withdrawals. BLF teas met with fair interest and were about

steady to slightly easier but there were heavier withdrawals. **CTC DUST:** 12,086 packages of Current Season teas on offer met with a fairly good demand. Good liquoring well made Dusts met with a better demand and sold at firm levels whilst Medium descriptions were irregularly easier. Plain and BLF Dusts were less in demand and witnessed more withdrawals compared to last. Blenders lent strong support with fair interest from the Loose tea buyers. **COMMENTS:** Buyers were more discriminating this week whereby a few bright teas elicited strong support whilst all others declined in price following quality. Blenders once again were the mainstay of the market with some support from the Loose tea buyers. Good liquoring Dusts were a strong feature of the sale.

Cochin: at Sale 42 held on the 19th October, 2022. **CTC Leaf:** Good demand, All grades sold steady to dearer. **Buying pattern:** Up country buyers operated. **ORTHODOX Leaf:** Good demand. hole leaf sold irregularly lower. Some primary well-made whole leaf sold at steady to dearer levels. However clean black smaller broken and fannings appreciated 3-5c. **Buying pattern:** CIS operating with support from ME. **Dust:** Fair Demand. Popular marks and better mediums sold lower. Plainer bolder grades sold around last levels to occasionally dearer. Finer grades tending lower. **Buying pattern:** Major blenders active. Internal buyers operated.

Calcutta: at Sale 43 held on the 28th and 29th October, 2022, **CTC:** There was better demand. Good liquoring Assams were fully firm and at times dearer on competition. Cleaner, well-made medium Assams were fully firm to dearer whilst other descriptions were barely steady. Better Dooars were firm to dearer. Plainer Dooars were firm to at times dearer. **Dust:** There was good

Auction Offerings

	Week 43	Week 44	Week 45	Week 46
Centre	26-Oct	02-Nov	09-Nov	16-Nov
Mombasa	184,020	194,376	197,500	205,640
Limbe	2,120	4,340		
Colombo	5.5m/kgs	5.3m/kgs	5.3m/kgs	
Jakarta				
Calcutta	180,451	161,733	178,565	
Guwahati	161,161	200,525	228,998	220,687
Chittagong	65,492	66,828		
Total	593,244	627,802	605,063	426,327

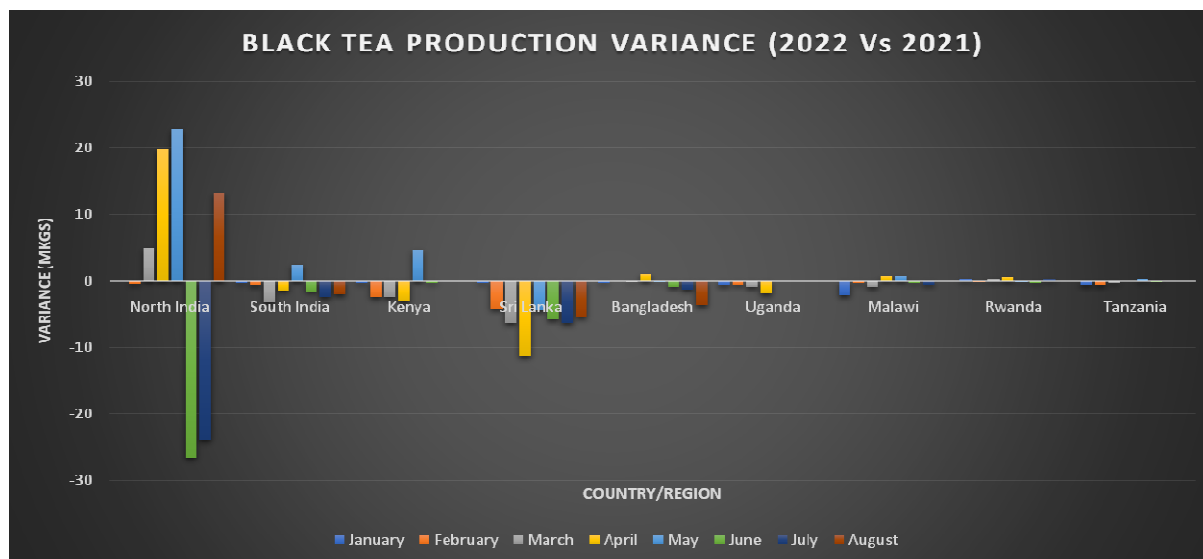
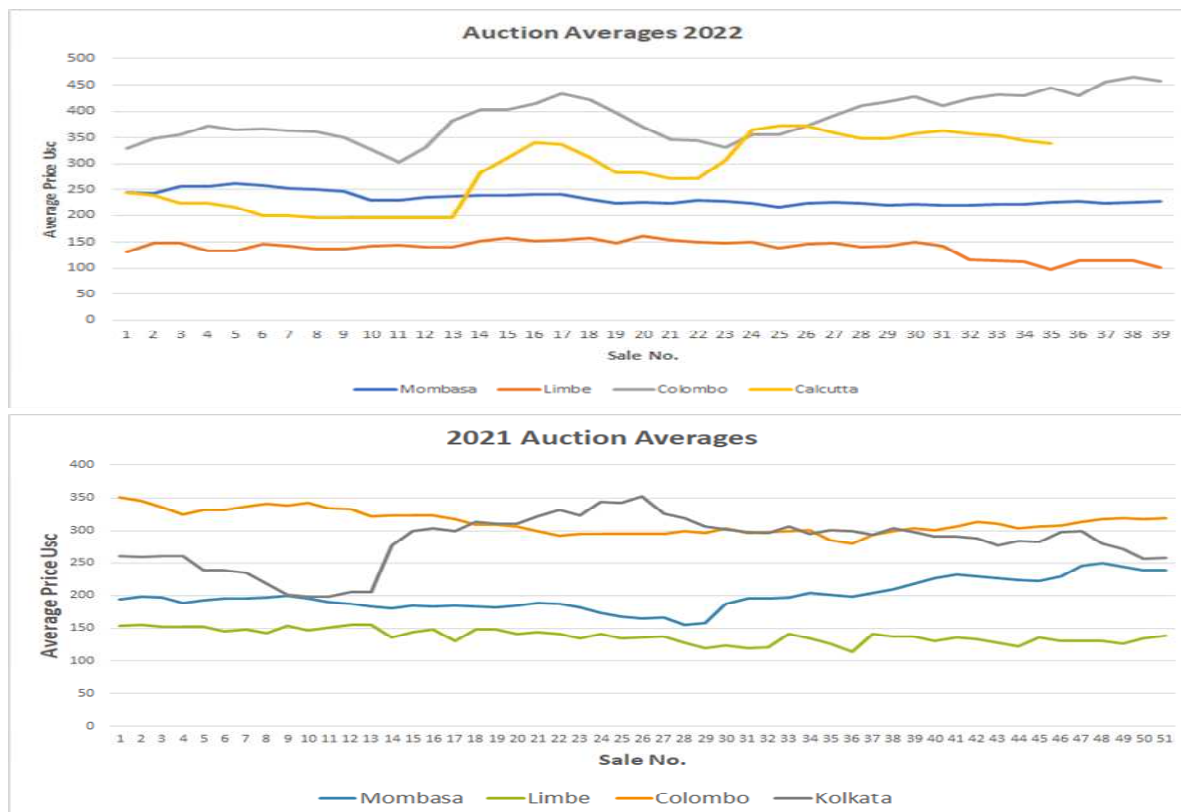
demand. Better liquoring Assams were overall firm. Medium descriptions were fully firm to dearer. M/s Tata Consumer Products operated selectively on better Assams in the leaf category whilst they were active on medium category teas with useful support on plainer Dooars. They operated on brighter liquoring Assams in the dust market. M/s Hindustan Unilever was active with useful support on brighter liquoring Assams in both markets. Western India buyers were active on better Assams along with useful activity from a regional packeteer on good liquoring Assams in the leaf market. Exporters operated on larger broken but were less active compared to the previous week. Local buyers operated on the Dooars & other clean, well-made descriptions.

Guwahati: at Sale 43 held on the 27th October, 2022, there were 211,075 packages on offer.

Market: CTC There was good demand with the good and best Assams sold at steady to at times easier levels. Remainder were irregular around last commensurate with quality. **Buying Pattern:** HUL/Western India buyers were the mainstay of the market. TCPL operated selectively. Exporters were selective mainly on the larger broken.

Market: DUST The Dust market had a better demand in comparison to leaf. Prices were steady to at times easier in line with quality. **Buying Pattern:** DUST Major packeteers and Western India buyers were the mainstay of the market. There was fair enquiry from the other internal segments of the trade.

Auction Prices Trends



Regional Weather Conditions and World Crop

Kenya: Muranga: the week in review was sunny and rainy with 3.0mm of rain recorded in 1 wet day. The maximum and minimum temperatures were recorded at (26°C / 12°C) respectively. Crop intake averaged 95.2 tonnes/day on a 6 day plucking cycle.

Nyeri: The week was mostly warm and sunny, no rainfall was recorded. The highest and lowest temperatures were 22°C & 12°C respectively. Crop intake averaged 42 tonnes/day on a 6 day plucking cycle.

Meru: The week was sunny and warm throughout the week with 174mm of rainfall recorded on 3 wet days. On average the highest and lowest temperatures were at 28°C & 15°C respectively. Crop intake averaged 47 tonnes/day on a six day plucking cycle.

Gotik: The area was mainly hot and dry with sunny conditions and no rainfall. The highest and lowest temperatures were 28°C & 11°C respectively. Factory utilization slightly increased from last week's levels.

Kericho: The week under review was mostly sunny throughout the week with only one rainy day. A total of 14.9mm rainfall was recorded. Average temperatures were high of 25°C Celsius and lows of 10°C Celsius. Crop intake went up by 64% compared to previous weeks levels



The trouble with weather forecasting is that it is right too often for us to ignore it and wrong too often for us to rely on it.

due to increased harvesting days. Crop on offer is on an upward trend due to some good growing conditions and recoveries of fields previously hit by hail effects.

Uganda: Some rains were received in the tea growing areas with Fort Portal receiving 66mm (42mm). Kibale received 01mm (18mm,) Hoima received 16mm (43mm) and Bushenyi received 44mm (52mm) of rainfall. The maximum temperatures maintained at an average 28°C while the minimum temperatures averaged 17°C. Crop levels have slightly improved.

goma, West-Pokot, Siaya, Kisumu, Homa-bay, Busia, Migori, Baringo, Nakuru and Narok Counties): Mornings are likely to be generally sunny. Afternoon showers and thunderstorms are likely to occur over few places occasionally spreading to several places. Night showers are expected over few places. Maximum (day-time) temperatures are likely to drop to about 23°C in Eldoret but may rise to 33°C in Kisumu.

Highlands East of the Rift Valley (Nyandarua, Laikipia, Nyeri, Kirinyaga, Murang'a, Kiambu, Meru, Embu, Tharaka-Nithi and Nairobi Counties): Cloudiness, at times accompanied by rains, is expected in the morning giving way to sunny intervals. Afternoon and night showers are likely to occur over few places. Maximum (day-time) temperatures are likely not to exceed 32°C in Thika while in Nyahururu they may be as low as 21°C.

Crop production Kenya: Crop volumes are low, but have slightly gone up in some areas due to the warmer temperatures. However, the crop is very low in places hit by hail a couple of weeks ago.

Uganda: Crop levels have slightly improved.

DETAILED REGIONAL FORECAST FOR 1st to 7th November 2022. The Highlands West of the Rift Valley, the Lake Victoria Basin and the Central and South Rift Valley (Kisii, Nyamira, Trans-Nzoia, Uasin-Gishu, Elgeyo-Marakwet, Nandi, Kericho, Bomet, Kakamega, Vihiga, Bun-

	World Production from Main Producing Countries over the Past Twelve Months														Production over calendar years	
	Jan	Feb	Mar	Apr	May	Jun	Jul	Aug	Sep	Oct	Nov	Dec	Total	+ / -	2021	2020
	Variance															
Bangladesh	-	1.2	1.6	4.9	6.2	12.6	11.3	10.8	12.6	14.6	10.2	6.9	47.4	(5.3)	79.9	90.7
North India	-	1.8	51.8	71.2	100.2	117.0	133.3	166.4	141.4	167.3	103.0	49.7	641.7	9.8	773.3	1,033.4
South India	15.9	14.6	16.3	20.6	26.9	24.3	19.3	14.3	22.4	21.3	16.6	14.8	152.2	(9.3)	183.9	219.4
Sri Lanka	22.8	18.2	22.0	18.3	26.0	20.1	19.8	18.2	22.6	24.0	20.0	20.4	165.4	(44.2)	232.2	275.9
Kenya	48.7	40.8	46.3	41.2	50.0	43.3	34.7	33.6	43.4	49.0	50.7	54.4	270.3	(3.7)	342.3	570.6
Uganda	6.6	5.5	4.7	5.4	7.0	6.5	5.5	4.5	6.0	7.6	6.6	6.7	22.2	(4.0)	10.6	28.3
Tanzania	2.1	2.7	3.1	2.9	2.7	1.8	1.0	0.9	1.6	2.6	1.9	1.5	15.3	(1.4)	20.2	28.6
Rwanda	3.4	2.9	3.6	3.8	3.6	3.0	2.3	1.5	2.1	3.5	3.3	3.2	22.6	0.6	25.6	33.2
Malawi	4.8	7.0	7.1	7.1	4.5	1.9	1.3	2.0	3.6	2.9	1.4	5.3	39.3	(3.1)	42.4	45.2
Total	104.3	93.5	156.5	175.4	220.1	224.0	187.3	211.7	3.6	282.6	207.1	101.8	1,376.4	(60.6)	1,710.4	2,325.3
Variance	(2.5)	(5.4)	34.0	11.6	5.1	30.4	16.9	10.2	-21.4	0.0	0.0	0.0	100.3			

Monthly figures in "BLACK" are for 2022 whilst figures in "BLUE" are for 2021

