



## TEA BROKERS EAST AFRICA LIMITED

Telephone: +254 41 2221953 / 4  
 Fax: +254 41 231 4480  
 Mobile: +254 735 221953 / 729 403507  
 E-mail: mail@tbeal.co.ke  
 www.tbeal.net

Tea Trade Centre  
 Nyerere Avenue  
 PO Box 87296 - 80100



### Tea Market Report: Sale 43 of 24th - 26th October, 2022

Improved general demand for the 194,376 packages (13.058m/kgs) on offer at irregular levels following quality. 31.41% were neglected.

#### Leaf Grades (M2)

**Offerings:** 110,400 packages (7.28m/kgs) –32.93% unsold.

#### BP1:

**Best** – Saw irregular activity and varied between firm to USC46 above last levels to easier by up to USC44.

**Brighter** – Advanced by up to USC24 but a few invoices lost up to USC16.

**Mediums** – KTDA mediums were irregular ranging between steady to USC12 dearer to easier by up to USC12; plantation mediums varied between USC28 dearer to easier by USC18 with select invoices losing up to USC42.

**Lower Mediums** – Met more competition and appreciated by up to USC40 but a few lines eased by up to USC24.

**Plainer** –Appreciated by up to USC22 with selected improved teas dearer by up to USC36.

#### PF1:

**Best** – Were firm to USC17 above previous levels.

**Brighter** – Steady to USC15 dearer.

**Mediums** –KTDA mediums were

#### Current and Future Fresh Auction Offerings

Country	Sale 43 24 - 26 Oct'22		Sale 43 25 - 27 Oct'21		Sale 44 31 Oct - 2 Nov'22		Sale 45 7 - 9 Nov'22	
	MG	SG	MG	SG	MG	SG	MG	SG
Kenya	115,040	9,157	86,920	11,320	113,600	7,860	120,960	9,000
Uganda	13,120	7,100	14,920	8,340	15,200	8,000	14,640	8,000
Tanzania	1,560	960	960	1,000	1,040	660	3,440	1,080
Rwanda	4,360	440	4,160	840	4,720	860	3,560	700
Burundi	1,040	240	1,200	240	960	240	1,040	560
Zambia	0	0	0	0	0	0	0	0
Malawi	0	0	0	0	0	0	0	0
Madagascar	0	0	0	0	0	0	0	0
Zimbabwe	0	0	0	0	0	0	0	0
D R Congo	0	0	0	0	0	0	0	0
Mozambique	0	0	0	0	0	0	0	0
Ethiopia	0	0	0	0	0	0	0	0
Reprints	40,200	1,159	19,460	2,060	42,880	1,480	41,160	1,500
<b>Total</b>	<b>135,120</b>	<b>17,897</b>	<b>108,160</b>	<b>21,740</b>	<b>135,520</b>	<b>17,620</b>	<b>143,640</b>	<b>19,340</b>
		<b>153,017</b>		<b>129,900</b>		<b>153,140</b>		<b>162,980</b>

firm to USC12 dearer however a few lines shed up to USC9 while plantation mediums advanced by up to USC11.

**Lower Mediums** – Were mostly dearer by up to USC20 but some teas lost up to USC14.

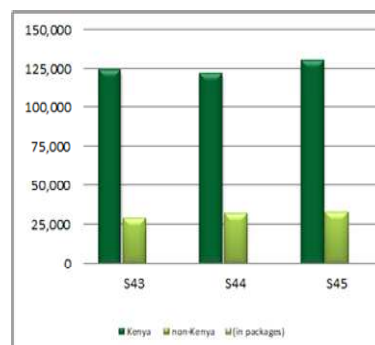
**Plainer** – Met improved competition and were steady to USC14 above previous prices with only a few lines easier by up to USC10.

#### DUST Grades (M1)

**Offerings:** 64,920 packages (4.83m/kgs) –2 9.39% unsold.

#### PDUST:

**Best** – Met irregular interest and varied between firm to USC10



dearer to easier by a similar margin.

**Brighter** – Steady to USC10 easier and select invoices lost up to USC16.

## continued ....

**Mediums** – KTDA mediums varied between firm to USC4 dearer to easier by up to USC3 while plantation mediums were steady to USC10 above previous levels.

**Lower Medium** – Saw good competition and appreciated by up to USC18.

**Plainer** – Were irregular ranging between firm to USC15 dearer to easier by up to USC14.

**DUST1:**

**Best** – Varied between firm to USC16 dearer to easier by up to USC14.

**Brighter** – Irregular with some invoices steady to USC20 above last rates while others shed up to USC14.

**Mediums** – KTDA mediums were firm to USC9 dearer with a few lines advancing by up to USC20 while other select invoices lost up to USC20. Plantation mediums appreciated by up to USC10 but a few teas shed up to USC13.

**Lower Medium** – Were firm to USC18 above previous prices.

**Plainer** – Ranged between steady to USC10 dearer to easier by a similar margin.

**Secondary Grades (S1)**

**Offerings:** 19,056 packages (953,840.00 kilos) –11.75% unsold.

In the Secondary Catalogues, **BPs** advanced with **PFs** steady. Clean

well sorted coloury **Fannings** were firm to dearer while **similar DUSTs** appreciated. **Other Fannings** held value with **DUSTs** dearer. **BMFs** were readily absorbed at firm rates.

**Markets**

**Pakistan Packers, Egyptian Packers** and **Afghanistan** lent more support with **Bazaar, Sudan, Kazakhstan, other CIS states** and **Russia** showing improved activity. **Yemen, other Middle Eastern countries** and **UK** maintained interest with more enquiry from **Iran**. **Local Packers** were more active. **Somalia** were active at the lower end of the market.

## Mombasa Auction Hammer Market Analysis—Sale No 43/2022

	Category (Band)	Percentage volume sold	Average Price ranges (for the marks within the category)		Min-Max Prices per grade							
					BP1		PF1		PD		DUST1	
			Min	Max	Min	Max	Min	Max	Min	Max	Min	Max
1	Best	95%	3.05	3.86	2.62	4.46	3.04	3.28	2.8	3.06	3.2	3.98
2	Below Best	92%	2.77	3.08	2.55	3.42	2.76	3.13	2.58	2.96	2.86	3.92
3	Good	42%	2.09	2.73	2.4	2.9	2.26	2.78	2.08	2.71	2.12	3.03
4	Best Medium	91%	1.96	2.6	2.12	2.64	2	2.52	1.96	2.46	1.96	2.28
5	Medium	77%	1.51	2.22	1.4	2.52	1.54	2.24	1.58	2.12	1.54	2.11
6	Lower Medium	90%	1.35	1.78	1.17	1.68	1.38	1.92	1.46	1.82	1.44	1.9
7	Plain	83%	1.28	1.54	1.1	1.56	1.3	1.54	1.28	1.56	1.38	1.56
	Totals	66%	1.28	3.86	1.1	4.46	1.3	3.28	1.28	3.06	1.38	3.98
	Category (Band)	Percentage of Total Sold	Average Prices per grade								Totals	
			BP1		PF1		PD		DUST1			
			Kgs	Avg	Kgs	Avg	Kgs	Avg	Kgs	Avg	Kgs	Avg
1	Best	11%	104,848	3.17	424,848	3.11	273,000	2.89	110,632	3.84	913,328	3.14
2	Below Best	28%	258,480	2.8	1,071,585	3.03	701,068	2.81	160,652	3.63	2,191,785	2.97
3	Good	30%	417,352	2.55	1,190,881	2.5	626,005	2.49	183,041	2.56	2,417,279	2.51
4	Best Medium	10%	69,796	2.37	352,360	2.23	348,120	2.11	48,280	2.14	818,556	2.18
5	Medium	11%	76,130	1.95	395,673	2	331,591	1.93	73,132	1.92	876,526	1.96
6	Lower Medium	6%	61,372	1.49	187,483	1.66	183,256	1.62	74,520	1.61	506,631	1.62
7	Plain	3%	34,511	1.21	67,624	1.42	68,192	1.45	48,394	1.47	218,721	1.41
	Totals	100%	1,022,489	2.51	3,690,454	2.58	2,531,232	2.4	698,651	2.73	7,942,826	2.53

## Average Auction Hammer Quantities and Prices by Country

Country of Origin	Main			Secondary			Total			Total for Corresponding Sale for Last Year		
	Pkgs	Kgs	USC	Pkgs	Kgs	USC	Pkgs	Kgs	USC	Pkgs	Kgs	USC
Kenya	98,840	6,908,468	262	8,360	422,927	148	107,200	7,331,394	255	87,760	5,955,705	246
Uganda	12,040	764,006	161	6,540	318,428	122	18,580	1,082,434	149	18,060	1,031,036	105
Tanzania	1,160	66,672	146	940	40,612	114	2,100	107,284	134	1,460	77,262	103
Rwanda	3,960	275,928	305	380	25,152	240	4,340	301,080	300	3,480	244,888	306
Burundi	960	62,548	259	200	8,460	155	1,160	71,008	247	1,899	118,249	219
Zambia	-	-	-	-	-	-	-	-	-	-	-	-
Malawi	-	-	-	-	-	-	-	-	-	-	-	-
Mozambique	-	-	-	-	-	-	-	-	-	-	-	-
Madagascar	-	-	-	-	-	-	-	-	-	-	-	-
Zimbabwe	-	-	-	-	-	-	-	-	-	-	-	-
D R Congo	-	-	-	-	-	-	-	-	-	-	-	-
Ethiopia	-	-	-	-	-	-	-	-	-	-	-	-
<b>Total</b>	<b>116,960</b>	<b>8,077,622</b>	<b>253</b>	<b>16,420</b>	<b>815,579</b>	<b>139</b>	<b>133,380</b>	<b>8,893,200</b>	<b>242</b>	<b>112,659</b>	<b>7,427,140</b>	<b>226</b>

Sale Number	Previous Sale's Quantities and Prices									Tot+Q20:Q23al for Corresponding Sale for Last Year		
	Main			Secondary			Total			Pkg	Kgs	USC
Sale 42/22	114,260	7,889,054	247	15,120	751,803	139	129,380	8,640,857	237			
Sale 41/22	112,020	7,743,205	243	15,480	771,135	139	127,500	8,521,224	233	107,205	7,083,753	231
Sale 40/22	98,380	6,743,042	241	13,080	655,453	138	111,460	7,398,495	232	95,501	6,267,644	226
Sale 39/22	103,180	7,094,711	238	17,300	857,289	138	120,480	7,952,000	227	95,320	6,268,468	218
Sale 38/22	109,680	7,487,363	236	17,748	872,550	134	127,428	8,359,913	225	94,532	6,159,143	210
Sale 37/22	103,560	7,119,631	236	19,720	969,014	135	123,280	8,088,644	224	89,879	5,878,182	204

## Average Auction Hammer Prices by Grade and Country

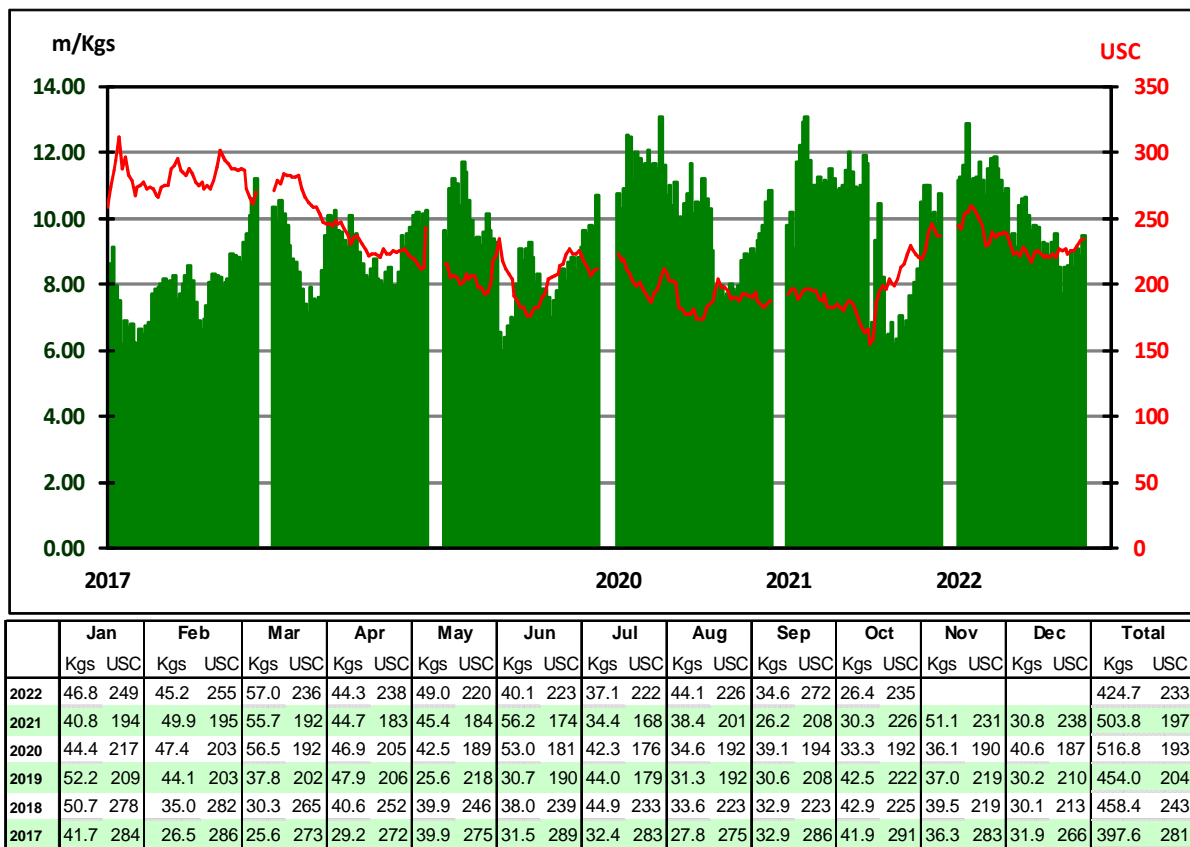
Country of Origin	Current Sale's Prices per Grade										Corresponding Prices per Grade for Last Year									
	BP1	PF1	PD	D1	BP/2	PF/2	D/2	F/1	BMF	Av	BP1	PF1	PD	D1	BP/2	PF/2	D/2	F/1	BMF	Av
Kenya	257	265	249	300	165	165	155	154	102	255	206	268	250	258	130	158	102	137	72	246
Uganda	147	167	161	158	122	144	145	121	99	149	107	128	108	111	102	110	104	91	68	105
Tanzania	124	153	153	148	116	131	130	119	102	134	105	116	115	117	92	129	80	95	69	103
Rwanda	332	303	283	301	290	244	236	165	141	300	428	314	284	283	262	-	185	149	-	306
Burundi	267	266	244	246	-	-	-	155	-	247	200	257	230	232	-	-	138	147	-	219
Zambia	-	-	-	-	-	-	-	-	-	-	-	-	-	-	-	-	-	-	-	-
Malawi	-	-	-	-	-	-	-	-	-	-	-	-	-	-	-	-	-	-	-	-
Mozambique	-	-	-	-	-	-	-	-	-	-	-	-	-	-	-	-	-	-	-	-
Madagascar	-	-	-	-	-	-	-	-	-	-	-	-	-	-	-	-	-	-	-	-
Zimbabwe	-	-	-	-	-	-	-	-	-	-	-	-	-	-	-	-	-	-	-	-
D R Congo	-	-	-	-	-	-	-	-	-	-	-	-	-	-	-	-	-	-	-	-
Ethiopia	-	-	-	-	-	-	-	-	-	-	-	-	-	-	-	-	-	-	-	-
<b>Total</b>	<b>251</b>	<b>258</b>	<b>240</b>	<b>273</b>	<b>166</b>	<b>156</b>	<b>157</b>	<b>139</b>	<b>101</b>	<b>242</b>	<b>194</b>	<b>259</b>	<b>235</b>	<b>237</b>	<b>120</b>	<b>134</b>	<b>112</b>	<b>120</b>	<b>70</b>	<b>226</b>

Sale Number	Previous Sale's Prices per Grade										Corresponding Prices per Grade for Previous Year									
	BP1	PF1	PD	D1	BP/2	PF/2	D/2	F/1	BMF	Av	BP1	PF1	PD	D1	BP/2	PF/2	D/2	F/1	BMF	Av
Sale 40/22	247	253	237	253	194	154	154	135	101	237	225	266	231	231	138	135	115	127	72	229
Sale 41/22	250	250	229	244	183	155	152	134	105	233	228	271	231	218	139	133	117	126	73	231
Sale 40/22	247	248	226	236	177	149	159	133	104	232	228	259	231	225	132	135	120	127	74	226
Sale 39/22	247	247	225	222	170	154	154	136	101	227	235	247	215	222	137	127	108	125	74	218
Sale 38/22	248	243	221	227	181	157	150	130	98	225	216	242	213	214	138	130	104	123	74	210
Sale 37/22	238	241	230	227	196	156	148	129	100	224	235	231	202	211	143	123	107	124	73	204

## Average Auction Prices and Quantities by Country

Country	Previous Sale Sale 42/22		Year To Date 2022		Last Year Sale 42/21		Year To Date 2021		Variance Year To Date	
	Kgs	USC	Kgs	USC	Kgs	USC	Kgs	USC	Kgs	USC
Kenya	7,927,117	246	337,279,550	249	6,085,803	243	327,210,020	199	10,069,530	50
Uganda	1,071,040	145	57,261,019	133	1,138,718	114	56,994,318	116	266,701	17
Tanzania	53,228	136	4,664,064	124	40,952	102	3,942,304	101	721,760	23
Rwanda	342,516	292	20,219,193	280	269,245	343	20,160,672	265	58,521	15
Burundi	67,736	230	5,282,984	229	110,646	226	5,425,690	199	-142,706	30
Zambia	-	-	-	-	-	-	-	-	0	0
Malawi	-	-	-	-	-	-	-	-	0	0
Mozambique	-	-	-	-	-	-	-	-	0	0
Madagascar	-	-	-	-	-	-	98,943	101	-98,943	-101
Zimbabwe	-	-	-	-	-	-	-	-	0	0
D R Congo	-	-	-	-	-	-	-	-	0	0
Ethiopia	-	-	23,839	148	9,572	125	155,720	135	-131,881	13
<b>Total</b>	<b>9,461,637</b>	<b>235</b>	<b>424,730,649</b>	<b>233</b>	<b>7,654,936</b>	<b>227</b>	<b>413,987,667</b>	<b>190</b>	<b>10,742,982</b>	<b>43</b>

## Mombasa Weekly Average Auction Quantities and Prices 2017—2022



## Exchange Rates (2020-2022)



During the week the Kenya Shilling traded between KES 121.20 -121.60 and reached 121.20 at its lowest end week. Expectations are that the Kenya Shilling against US Dollar will trade at the level of 121.10 - 121.70 in the coming week.

(These figures are given as a guide and readers are advised not to use them as a basis for business transactions)

## Auction Quantities

Country Offerings	This Week Sale 43/22		Year To Date 2022		Year To Date 2021		Variance Year To Date	
	Packages	Kgs	Packages	Kgs	Packages	Kgs	Packages	Kgs
Kenya	124,197	8,523,478	5,265,967	358,769,865	4,927,276	332,229,209	338,691	26,540,656
Uganda	20,220	1,177,475	1,020,280	58,809,697	991,335	57,338,700	28,945	1,470,997
Tanzania	2,520	135,744	90,360	4,824,250	80,079	4,368,436	10,281	455,814
Rwanda	4,800	333,048	296,000	20,425,945	289,979	19,865,174	6,021	560,771
Burundi	1,280	78,260	89,638	5,431,320	82,820	5,142,056	6,818	289,264
Zambia	0	0	0	0	0	0	0	0
Malawi	0	0	1,120	65,848	0	0	1,120	65,848
Mozambique	0	0	0	0	0	0	0	0
Madagascar	0	0	0	0	2,020	99,835	-2,020	-99,835
Zimbabwe	0	0	0	0	0	0	0	0
D R Congo	0	0	0	0	0	0	0	0
Ethiopia	0	0	400	22,879	2,300	130,640	-1,900	-107,761
<b>Total</b>	<b>153,017</b>	<b>10,248,005</b>	<b>6,763,765</b>	<b>448,349,804</b>	<b>6,375,809</b>	<b>419,174,050</b>	<b>387,956</b>	<b>29,175,754</b>

## Sellers' Main Grade Quantities (in Packages)

Origin	BP 1			PF 1			PD			D 1			Total		
	S 43	S 44	S 45	S 43	S 44	S 45	S 43	S 44	S 45	S 43	S 44	S 45	S 43	S 44	S 45
KTDA	19877	20560	19360	60160	60200	64920	34160	33320	31440	5200	6440	8800	119397	120520	124520
Unilever Tea	360	240	360	160	160	160	160	160	120	80	80	80	760	640	720
James Finlay	480	360	520	960	560	800	440	640	760	0	0	0	1880	1560	2080
Eastern Produce	880	880	800	2160	3720	3520	840	840	840	640	600	480	4520	6040	5640
Others (K)	3100	3680	3260	12880	12140	13460	12380	11600	11800	2240	1880	2080	30600	29300	30600
Uganda	1800	2120	2240	4840	5580	5400	4760	5640	5560	2080	2400	1840	13480	15740	15040
Tanzania	430	310	310	1040	1240	680	840	440	360	500	260	260	2810	2250	1610
Rwanda	1400	1680	2060	1800	1840	2640	960	1040	1320	720	440	560	4880	5000	6580
Burundi	360	480	480	480	320	400	280	280	440	200	200	200	1320	1280	1520
DR Congo	0	0	0	0	0	0	0	0	0	0	0	0	0	0	0
Malawi	0	0	0	80	80	80	80	80	80	0	0	0	160	160	160
Zimbabwe	0	0	0	0	0	0	0	0	0	0	0	0	0	0	0
Madagascar	0	0	0	0	0	0	0	0	0	0	0	0	0	0	0
Mozambique	0	0	0	0	0	0	0	0	0	0	0	0	0	0	0
Zambia	0	0	0	0	0	0	0	0	0	0	0	0	0	0	0
Ethiopia	0	0	0	0	0	0	160	160	160	0	0	0	160	160	160
<b>Total</b>	<b>28687</b>	<b>30310</b>	<b>29390</b>	<b>84560</b>	<b>85840</b>	<b>92060</b>	<b>55060</b>	<b>54200</b>	<b>52880</b>	<b>11660</b>	<b>12300</b>	<b>14300</b>	<b>179967</b>	<b>182650</b>	<b>188630</b>

### Buyer Purchases of Teas Offered by Grade (in Packages)

BUYER	%	Total	BP1	PF1	PD	D1	BP2	PF2	D2	FNGS	BMF
1 GLOBAL TEA & COMMODITIES KENYA LTD.	12.96	25,200	3,040	12,040	8,400	560		240	560	340	20
2 JAMES FINLAY MOMBASA LIMITED	6.83	13,280	1,280	3,080	7,320	160		420		260	760
3 CHAI TRADING COMPANY LTD	5.58	10,840	1,720	7,820	1,020	160		20	20	80	
4 MOMBASA COFFEE LTD	5.10	9,920		1,240	5,680	2,920	80				
5 LAB INTERNATIONAL KENYA LTD	4.59	8,920		2,680	3,680	2,480	20	20	40		
6 CUP OF JOE LTD	3.50	6,800	2,940	3,840			20				
7 CARGILL KENYA LTD	3.46	6,720		6,720							
8 SSOE (KENYA) LIMITED	2.96	5,760	1,000	1,200	1,400	640	160	680	560	120	
9 DEVCHAND KESHAVJI (K) LTD	2.80	5,440		5,360	80						
10 COFFTEA AGENCIES LTD	2.78	5,400	2,960	760	200			120		1,360	
11 MIZAJ AFRICA LTD	2.20	4,280	680	400	2,960	240					
12 ABBAS TRADERS LTD	1.67	3,240	200	1,120	1,080		300	220	260	60	
13 M.J. CLARKE LTD	1.53	2,980		680	960	40			40	1,160	100
14 GOLD CROWN FOODS (EPZ) LTD	1.28	2,480						180	120	720	1460
15 ALIBHAI RAMJI (MSA) LTD	1.24	2,420	240	1,480	440		20	140	40	60	
16 VAN REES KENYA LIMITED	1.07	2,080	40	1,300	280	40		280		140	
17 SWAFI FOODS LIMITED	1.00	1,940	760	40	300	440	200	140	20	40	
18 SHAKAB EXPORT & IMPORT CO. LTD	0.93	1,800		1,440	40	40	100	40	120	20	
19 SUMMER LINER CO. LTD	0.93	1,800	360	200	40	120	100	40	60	360	520
20 AL EMIR LIMITED	0.76	1,480		1,200	40			160	80		
21 IMPERIAL TEAS (EPZ) LTD	0.61	1,180	680	400				20	80		
22 RANFER TEAS KENYA LTD	0.56	1,080		360	280	440					
23 INDO-AFRICAN TEA CO. (K) LTD.	0.50	980	320	660							
24 EMPIRE KENYA (EPZ) LTD	0.34	660	320	160	80			60		40	
25 AFRIBRIDGE TRADE EXPORTERS LTD	0.33	640	240	400							
26 TRANS-ATLANTIC TRADING Co. LTD	0.32	620		120	80	200		60	120	20	20
27 MOMBASA TEA TRADERS LTD	0.31	600			440	160					
28 STANSAND (A) LTD	0.29	560	240	320							
29 AIMCO ENTERPRISES LTD	0.27	520						40	40	80	360
30 PWANI HAULIERS	0.26	500								120	380
31 MAISHA COMMODITIES	0.19	360		80		40			120	120	
32 MCLEOD RUSSEL AFRICA LIMITED	0.19	360				360					
33 LULA TRADING COMPANY	0.17	340								20	320
34 GREEN LEAF TRADING CO. LTD	0.15	300								160	140
35 LINDOP & COMPANY (KENYA ) LTD	0.12	240		120	120						
36 TUSHA TEA LTD	0.12	240		200	40						
37 SARDIA INTERNATIONAL CO. LTD	0.11	220	40	40	80		60				
38 TROPICAL CROPS & COMMODITIES	0.10	200					40	20		40	100
39 KIRINDO TRADERS LIMITED	0.08	160	40				20			20	80
40 AFRO TEAS LTD	0.07	140		40						100	
41 AL KHALIFA ENTERPRISES LTD	0.07	140									140
42 CAPITAL TEA TRADERS	0.07	140								80	60
43 JAWAI TEA LIMITED	0.06	120			80	40					
44 GREAT WHITE PACKERS LTD	0.05	100		80				20			
45 CROVE UNIQUE LIMITED	0.02	40		40							
46 FIRST CUP COFFEE LTD	0.02	40						40			
47 NALA TEA COMPANY LTD	0.02	40			40						
48 TANZIL TRADING LIMITED	0.02	40									40
49 SUWAD ENTERPRISE LIMITED	0.01	20					20				
Total Sold	68.59	133,360	17,100	55,620	35,160	9,080	1,140	2,960	2,280	5,520	4,500
Withdrawn	-	-	-	-	-	-	-	-	-	-	-
Unsold	31.41	61,077	10,797	27,320	18,940	1,800	140	640	140	1,120	180
% Unsold			39	33	35	17	11	18	6	17	4
Grand Total	100.00	194,437	27,897	82,940	54,100	10,880	1,280	3,600	2,420	6,640	4,680
Sale 42/22	70.30%	129,380	17,800	53,000	35,900	7,560	920	2,660	2,480	4,580	4,480
Sale 41/22	70.33%	127,500	15,520	54,100	34,500	7,900	1,000	2,980	2,240	5,160	4,100
Sale 40/22	60.64%	111,060	18,320	46,860	26,120	6,680	740	2,080	1,900	5,400	2,960



## Other Tea Auction Centres

**C**olombo: at Sale 41 held on 18th and 19th October, 2022. The 0.80Mkg of Ex estate teas on offer met with fair demand. Select Best Western High Grown BOPs were firm, the below best and plainer varieties were tending easier. Select Best Western High Grown BOPFs too were firm together with the below best sorts, however plainer varieties declined. Nuwara Eliya BOPs were irregular, there were hardly any BOPFs on offer. Uda Pussellawa BOPs declined, the BOPFs too followed a similar trend. UVA BOPs were barely steady, the BOPFs were tending easier. Low grown CTC BP1s were easier, the High and Medium sorts were irregularly lower. Low Grown CTC PF1s were firm to a little easier, the High and Medium sorts were irregularly lower following quality. The 2.3Mkg of Low Grown teas which were on offer met with lower demand. In the Leafy segment, OP/OPA shed a few rupees. Select best and best OP1s were lower, others were mostly firm. In the Semi Leafy segment, BOP1s were lower to last. Pekoe varieties were firm, Pekoe1s were irregularly lower. In the Small Leaf segment, FBOPs were lower to last. FBOPF varieties continued with lower demand. FBOPF1s declined substantially towards the latter part of the sale. BOPF.SP, BOPF, BOP.SP and BOPs too met with lower demand. All Premium Flowery teas were lower. Turkey, Russia, Iran and the C.I.S countries lent fair support. Libya and Iraq were active.

**C**hittagong: at Sale 24 held on the 17th October, 2022, **CTC LEAF:** 53,475 packages of Current Season teas on offer met with a good demand. **BROKENs:** A small weight of well-made teas met with quite a strong demand and were generally firm. Medium varieties met with quite a good demand but were a little easier often by Tk.3/- to Tk.5/-. Plainer sorts met with fair demand at easier rates often declining by Tk.4/- to Tk.6/- with some withdrawals. BLFs once again were selective, but prices held on last levels. There were some withdrawals. **FANNINGS:** A few best liquoring Fannings met with a stronger demand and tended dearer whilst Good and Mediums met with a fairly good demand but were easier by Tk.3/- to Tk.5/- with a few withdrawals. Plain types were discounted further and there were several withdrawals in this category. BLFs once again were selective, but prices held on last levels. There were some withdrawals. **CTC DUST:** 12,017 packages of Current Season teas on offer met with a fairly good demand. Good liquoring Dusts sold well by Tk.2/- to

Tk.5/- higher than last levels. Mediums met with fair demand easing by Tk.8/- to Tk.10/- over last. Once again Plain and BLF Dusts witnessed a decline in price levels with some withdrawals. Blenders were active with fair interest from the Loose tea buyers. **COMMENTS:** Offerings were fairly heavy and owing to less competition, prices declined a little. However, a few bright liquoring types witnessed fair competition and were slightly dearer. Blenders were the mainstay of the market with limited support from the Loose tea buyers. Good liquoring Dusts continued to meet with more competition.

**C**ochin: at Sale 41 held on the 12th October, 2022. **CTC Leaf:** Good demand. All grades sold barely steady to occasionally lower 1-2c. **Buying pattern:** Up country buyers operated. **ORTHODOX Leaf:** Fair demand. Whole leaf sold lower 3-4c and more at times. Occasionally primary well-made whole leaf sold at steady levels. Remainder teas sold irregular around last levels. **Buying pattern:** CIS operating with support from ME. **Dust:** Fair Demand. Popular marks and better medium eased by 2-3c and sometimes more. Plainer sorts also shared a downward trend in the market. **Buying pattern:** Major blenders active. Internal buyers operated.

**C**alcutta: at Sale 42 held on the 18th to 20th October, 2022, there were 214,267 packages on offer. **CTC:** There was good demand. Better Assams were irregular around last levels, except for clean well-made & good liquoring descriptions which sold at firm to at time rates. Cleaner, well-made medium Assams met with better demand and sold at firm levels whilst other medium descriptions were irregularly easier. Bolder broken across most categories witnessed keep competition & were dearer. Better Dooars were barely steady. Plainer Dooars were steady. **Dust:** There was good demand. Better liquor-

## Auction Offerings

	Week 43	Week 44	Week 45	Week 46
Centre	26-Oct	02-Nov	09-Nov	16-Nov
Mombasa	194,376	197,500	205,640	
Limbe				
Colombo	5.3m/kgs	5.3m/kgs		
Jakarta				
Calcutta	161,733	178,565		
Guwahati	200,525	228,998	220,687	
Chittagong				
Total	556,634	605,063	426,327	-

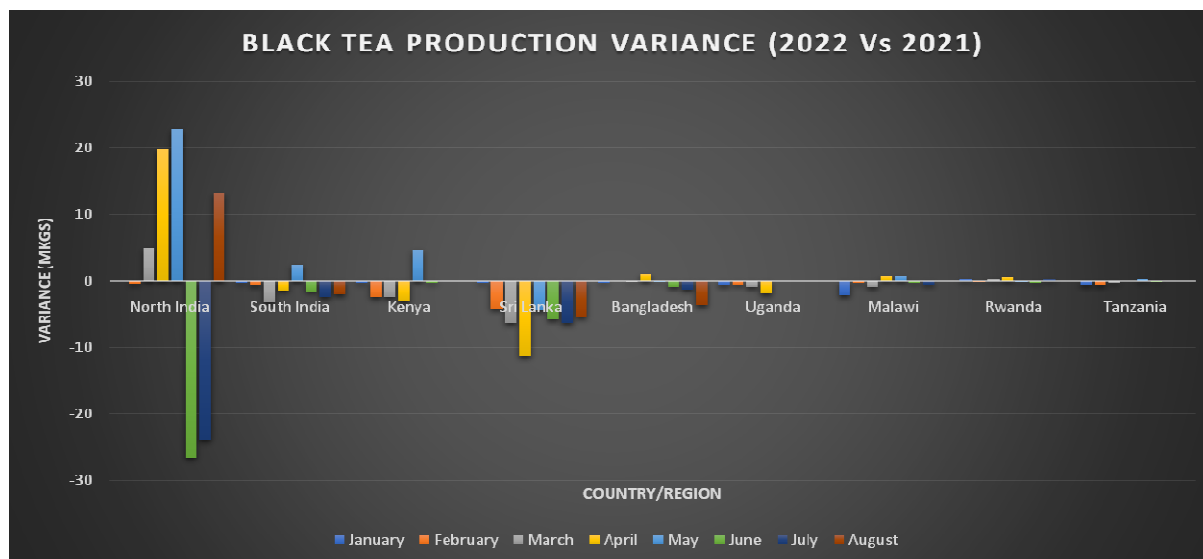
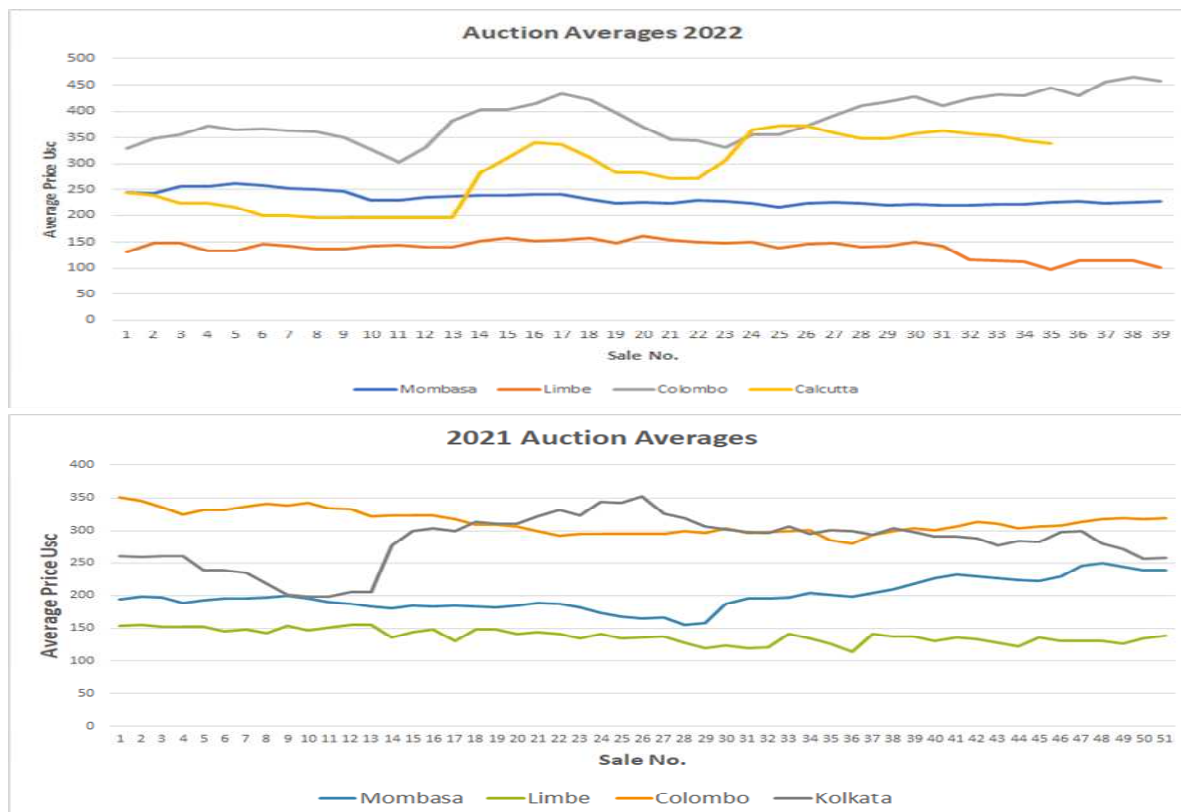
ing Assams were irregular around last levels. Medium descriptions were firm to often dearer on competition. M/s Tata Consumer Products operated selectively on better Assams in the leaf category whilst they were active on medium category teas with useful support on plainer Dooars. They operated on brighter liquoring Assams in the dust market. M/s Hindustan Unilever was active with useful support on brighter liquoring Assams in both markets. Western India buyers were active on better Assams along with useful activity from a regional packeteer on good liquoring Assams in the leaf market. Exporters competed for larger broken. Local buyers operated on the Dooars & other clean, well-made descriptions.

**G**uwahati: at Sale 42 held on the 19th October, 2022, there were 134,864 packages on offer.

**Market: CTC** There was good demand. The good and best Assams were firm to occasionally dearer. Remainder were irregular around last levels. **Buying Pattern:** HUL/Western India were the mainstay of the market. TCPL/Internal buyers operated mostly on the medium to plainer varieties. There was selective export enquiry on the larger broken.

**Market: DUST** There was improved demand in comparison with the previous week. Select better liquoring sorts were steady around last levels. Remainder were irregular following quality. **Buying Pattern: DUST** HUL participated actively on the better liquoring teas while TCPL operated selectively. There was fair support from Western India and buyers from other destinations.

## Auction Prices Trends





## Regional Weather Conditions and World Crop

**Kenya: Muranga:** the week in review was sunny with 3.5mm of rain recorded in 1 wet day. The maximum and minimum temperatures were recorded at (26°C / 12°C) respectively. Crop intake averaged 89.1 tonnes/day on a 5 day plucking cycle.

**Nyeri:** The week was mostly warm and sunny, no rainfall was recorded. The highest and lowest temperatures were 22°C & 13°C respectively. Crop intake averaged 49 tonnes/day on a 5 day plucking cycle.

**Meru:** The week was sunny and warm throughout the week with no rainfall. On average the highest and lowest temperatures were at 28°C & 14°C respectively. Crop intake averaged 47 tonnes/day on a five day plucking cycle.

**Sotik:** The area experienced sunny intervals followed by irregular showers. The area recorded a total of 10.2mm of rainfall in three wet days. The highest and lowest temperatures were 26°C & 13°C respectively. Factory utilization remained as at last week's levels.

**Kericho:** The week under review was partly sunny in the mornings followed by cloudy and rainy afternoons. A total of 59.4mm rainfall was recorded with few estates reporting mild hail damages. Average temperatures were highs of 23°C Celsius and lows of 10°C Celsius. Crop intake went down by 8% compared to



*The trouble with weather forecasting is that it is right too often for us to ignore it and wrong too often for us to rely on it.*

previous week's levels due to less harvesting days. Crop on offer is likely to improve with some fields duly recovering from previous hail effects.

**Uganda:** Some rains were received in the tea growing areas with Fort Portal receiving 42mm (100mm). Kibale received 18mm (78mm.) Hoima received 43mm (47mm) and Bushenyi received 52mm (16mm) of rainfall. The maximum temperatures maintained at an average of 28°C while the minimum temperatures averaged 16°C. Crop levels have slightly improved.

**DETAILED REGIONAL FORECAST FOR 25–31st October 2022.** The Highlands West of the Rift Valley, the Lake Victoria Basin and the Central and South Rift Valley (Kisii, Nyamira, Trans-Nzoia, Uasin-Gishu, Elgeyo-Marakwet, Nandi, Kericho, Bomet, Kakamega, Vihiga, Bungoma,

West-Pokot, Siaya, Kisumu, Homabay, Busia, Migori, Baringo, Nakuru and Narok Counties): Mornings are likely to be generally sunny. Afternoon showers and thunderstorms are likely to occur over few places. Nights are likely to be partly cloudy though showers may occur over few places. Maximum (day-time) temperatures are likely to drop to about 23°C in Eldoret but may rise to 32°C in Kisumu.

**Highlands East of the Rift Valley** (Nyandarua, Laikipia, Nyeri, Kirinyaga, Murang'a, Kiambu, Meru, Embu, Tharaka-Nithi and Nairobi Counties): The first half of the forecast period is likely to be generally sunny and dry. Nights are likely to be partly cloudy. During the second half of the forecast period intermittent cloudiness, at times accompanied by light rains, is expected in the morning giving way to sunny intervals. Afternoon and night showers are likely to occur over few places. **Crop production Kenya:** Crop volumes are low, but have slightly gone up in some areas due to the warmer temperatures. However, the crop is very low in places hit by hail a couple of weeks ago.

**Uganda:** Crop levels have slightly improved.

**Malawi:** Crop intake on the decline.

World Production from Main Producing Countries over the Past Twelve Months															Production over calendar years	
	Jan	Feb	Mar	Apr	May	Jun	Jul	Aug	Sep	Oct	Nov	Dec	Total	+ / -		
	Variance														2021	2020
Bangladesh	-	1.2	1.6	4.9	6.2	12.6	11.3	10.8	12.6	14.6	10.2	6.9	47.4	(5.3)	79.9	90.7
North India	-	1.8	51.8	71.2	100.2	117.0	133.3	166.4	141.4	167.3	103.0	49.7	641.7	9.8	773.3	1,033.4
South India	15.9	14.6	16.3	20.6	26.9	24.3	19.3	14.3	22.4	21.3	16.6	14.8	152.2	(9.3)	183.9	219.4
Sri Lanka	22.8	18.2	22.0	18.3	26.0	20.1	19.8	18.2	22.6	24.0	20.0	20.4	165.4	(44.2)	232.2	275.9
Kenya	48.7	40.8	46.3	41.2	50.0	43.3	34.7	33.6	43.4	49.0	50.7	54.4	270.3	(3.7)	342.3	570.6
Uganda	6.6	5.5	4.7	5.4	7.0	6.5	5.5	4.5	6.0	7.6	6.6	6.7	22.2	(4.0)	10.6	28.3
Tanzania	2.1	2.7	3.1	2.9	2.7	1.8	1.0	0.9	1.6	2.6	1.9	1.5	15.3	(1.4)	20.2	28.6
Rwanda	3.4	2.9	3.6	3.8	3.6	3.0	2.3	1.5	2.1	3.5	3.3	3.2	22.6	0.6	25.6	33.2
Malawi	4.8	7.0	7.1	7.1	4.5	1.9	1.3	2.0	3.6	2.9	1.4	5.3	39.3	(3.1)	42.4	45.2
Total	104.3	93.5	156.5	175.4	220.1	224.0	187.3	211.7	3.6	282.6	207.1	101.8	1,376.4	(60.6)	1,710.4	2,325.3
Variance	(2.5)	(5.4)	34.0	11.6	5.1	30.4	16.9	10.2	-21.4	0.0	0.0	0.0	100.3			

Monthly figures in "BLACK" are for 2022 whilst figures in "BLUE" are for 2021

## Mombasa Auction—Weekly Sale Average Prices (All teas) 2022

				Year : 2022	Year : 2022	Year : 2021	Year : 2020
Sale Nos.	Sale Date	Kilos sold Weekly	Kilos Sold monthly	Av.Price US\$ weekly	Av. Price US\$ monthly	Av. Price US\$ monthly	Av. Price US\$ monthly
1	04-Jan-22	11,166,757		2.44			
2	11-Jan-22	11,235,997		2.42			
3	18-Jan-22	11,588,410		2.53			
4	25-Jan-22	12,859,526		2.55			
			46,847,700		2.49	1.94	2.17
5	01-Feb-22	11,075,868		2.60			
6	08-Feb-22	11,184,062		2.57			
7	15-Feb-22	11,247,057		2.52			
8	22-Feb-22	11,683,128		2.50	2.55	1.95	2.03
9	01-Mar-22	11,147,057		2.44			
10	08-Mar-22	10,723,858		2.29			
11	15-Mar-22	11,492,906		2.36			
12	22-Mar-22	11,803,557		2.39			
13	29-Mar-22	11,843,379		2.36	2.36	1.92	1.92
3 mths Totals:					\$2.45 149,048,570 Kgs	\$1.94 146,474,310 Kgs	\$2.03 148,359,082 Kgs
14	05-Apr-22	11,483,104		2.38			
15	10-Apr-22	11,133,534		2.38			
16	20-Apr-22	10,758,738		2.39			
17	26-Apr-22	10,890,972		2.38			
			44,266,348		2.38	1.83	2.05
18	05-May-22	9,409,673		2.30			
19	10-May-22	9,537,586		2.23			
20	17-May-22	9,132,928		2.24			
21	24-May-22	10,373,511		2.22			
22	31-May-22	10,594,907		2.28	2.20	1.84	1.89
			49,048,605				
23	07-Jun-22	10,632,772		2.27			
24	14-Jun-22	10,105,643		2.22			
25	21-Jun-22	9,643,573		2.17			
26	28-Jun-22	9,765,460		2.24	2.23	1.74	1.79
6 mths Totals:					\$2.38 282,510,969 Kgs	\$1.87 292,688,228 Kgs	\$1.97 290,761,896 Kgs
27	05-Jul-22	9,751,228		2.25			
28	12-Jul-22	8,896,491		2.23			
29	19-Jul-22	9,258,643		2.21			
30	26-Jul-22	9,237,776		2.22	2.23	1.68	1.76
31	02-Aug-22	8,847,424		2.20			
32	09-Aug-22	9,252,926		2.23			
33	16-Aug-22	9,550,677		2.21			
34	23-Aug-22	8,735,668		2.21			
35	30-Aug-22	7,726,507		2.26	2.22	2.01	1.92
			44,113,201				
36	06-Sep-22	8,505,013		2.27			
37	13-Sep-22	8,552,282		2.23			
38	20-Sep-22	9,003,351		2.25			
39	27-Sep-22	8,501,257		2.33	2.27	2.08	1.94
9 mths Totals:						\$1.88 391,770,296 Kgs	\$1.94 406,720,334 Kgs
40	04-Oct-22	8,064,156		2.29			
41	11-Oct-22	8,874,645		2.33			
42	18-Oct-22	9,461,637		2.35			
43	25-Oct-22						
			26,400,438		2.32	2.26	1.90
			-			2.31	1.90
						2.38	2.10
			-				
Sale Nos. 1 to 51						503,893,400 Kgs	516,802,891 Kgs
Year end Totals :						\$1.97	\$1.93

Summary : Sale Averages by Country							
		Year : 2022				Year : 2021	
		Sale Nos: 1 to 39 ( 9 months )				Sale Nos: 1 to 39 ( 9 months )	
Country :	Kilos ' 000	Av. Prc	US\$	Country :	Kilos ' 000	Av. Prc	US\$
Kenya	315,396		2.49	Kenya	309,571		1.97
Uganda	54,226		1.33	Uganda	53,856		1.16
Tanzania	4,453		1.23	Tanzania	3,793		1.01
Rwanda	19,177		2.80	Rwanda	19,279		2.62
Burundi	5,054		2.29	Burundi	5,040		1.98
Malawi	-		-	Malawi	-		-
Mozambique	-		-	Mozambique	-		-
D R Congo	-		-	D R Congo	-		-
Madagascar	-		-	Madagascar	99		1.01
Ethiopia	24		1.48	Ethiopia	132		1.36
Total :	398,330		2.33		391,770		1.88
